

5 SITE PLAN
SCALE: NOT TO SCALE



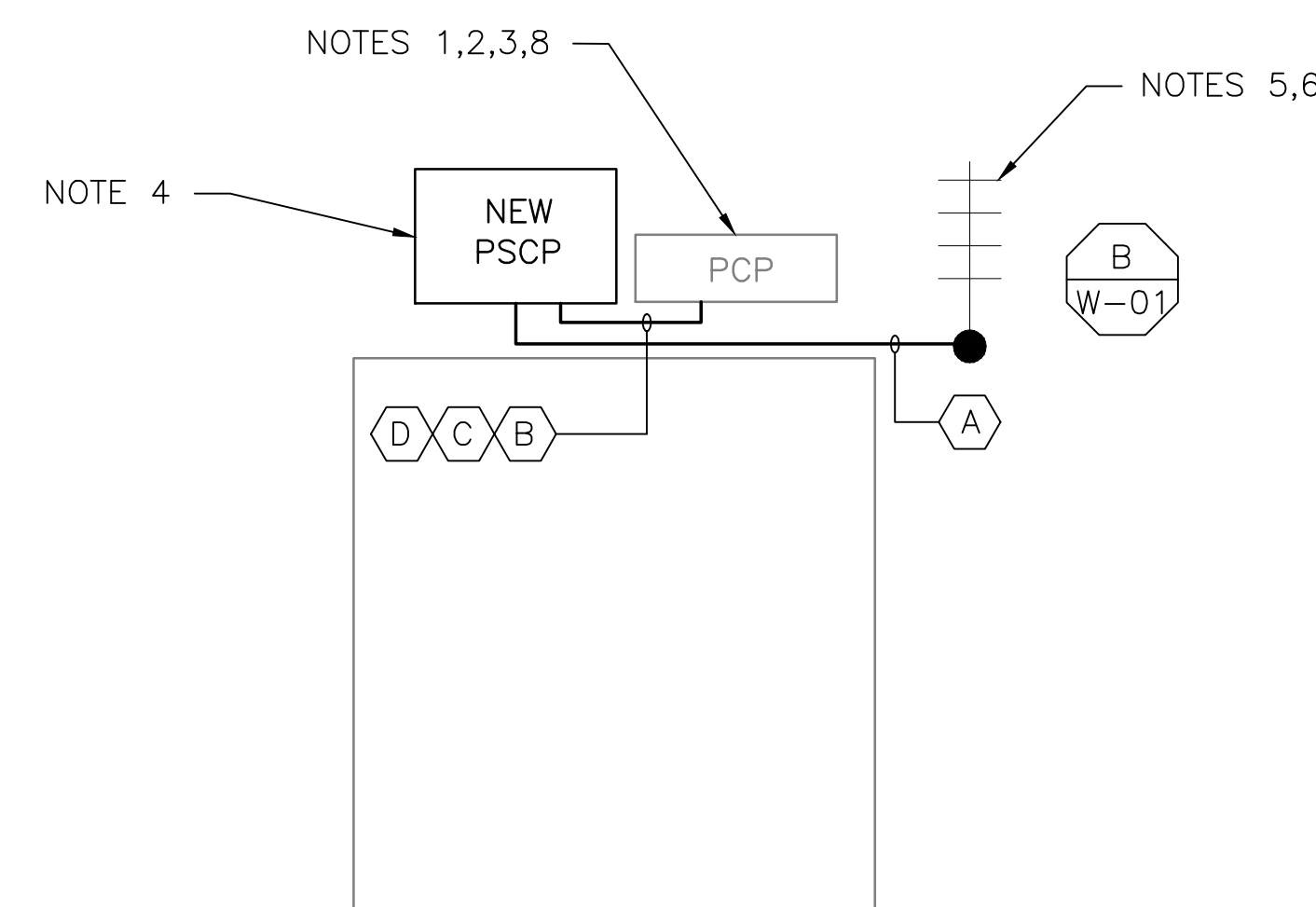
2 EXISTING ANTENNA LOCATION
SCALE: NOT TO SCALE



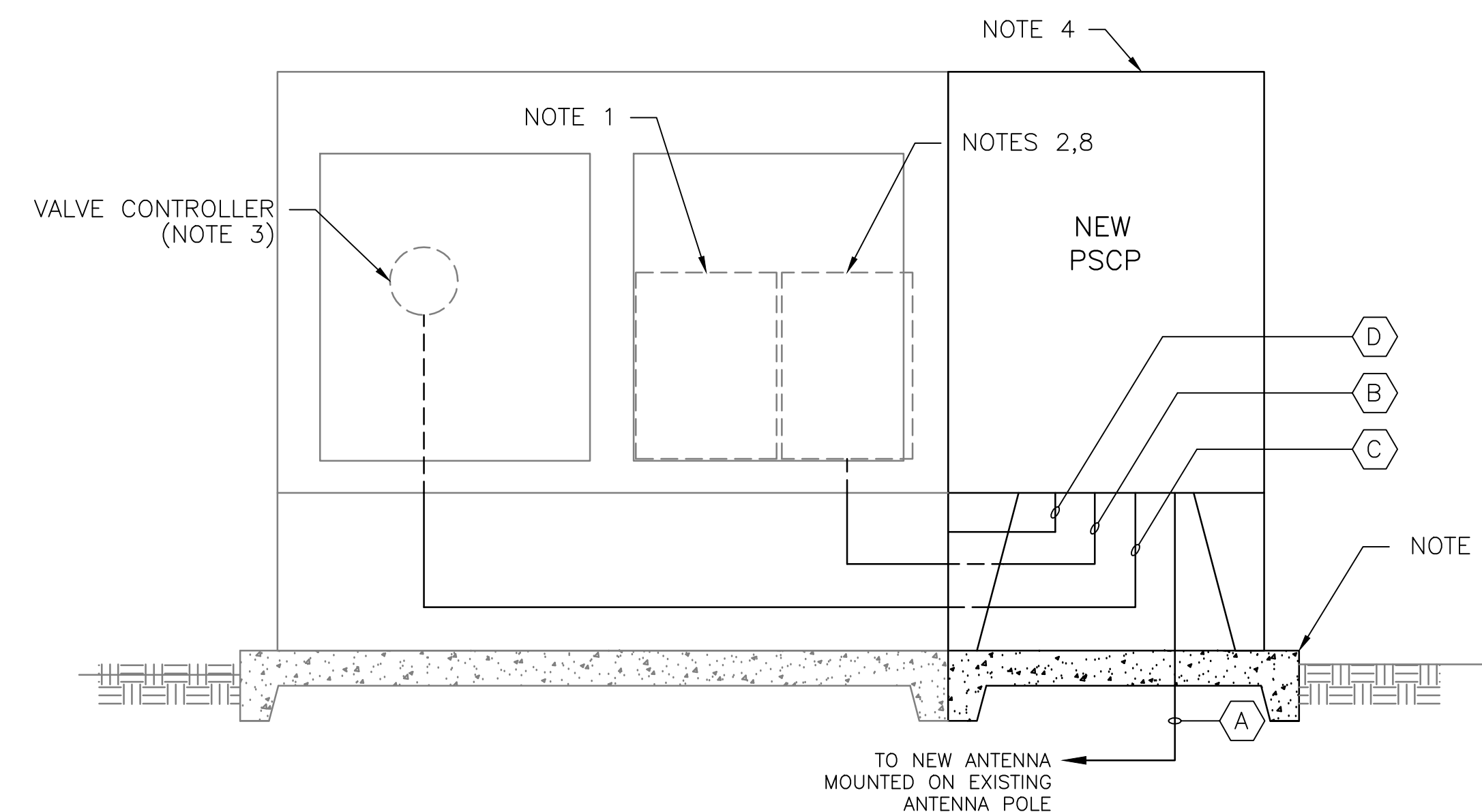
3 EXISTING MOSCAD PANEL
SCALE: NOT TO SCALE

NOTES:

1. EXISTING MOSCAD UNIT AND RADIO TO BE REMOVED FROM EXISTING PANEL.
2. EXISTING TELOG PANEL TO REMAIN.
3. EXISTING VALVE CONTROLLER TO REMAIN, REWIRE CONTROLS TO NEW PUMP STATION CONTROL PANEL (PSCP) AS SHOWN ON DRAWINGS.
4. NEW PSCP, REFER TO DRAWING G-16.
5. MOVE EXISTING ANTENNA DOWN ON MAST AND INSTALL NEW ANTENNA ON TOP OF MAST. INSTALL NEW ANTENNA CABLE.
6. REMOVE EXISTING ANTENNA AND CABLE AFTER SUCCESSFUL TESTING OF THE NEW PSCP.
7. PROVIDE NEW CONCRETE PAD.
8. PROVIDE NEW TERMINAL BLOCKS IN EXISTING PANEL AND EXTEND EXISTING CONTROL WIRING TO NEW PSCP.



1 BUILDING PLAN
SCALE: 3/8" = 1'-0"



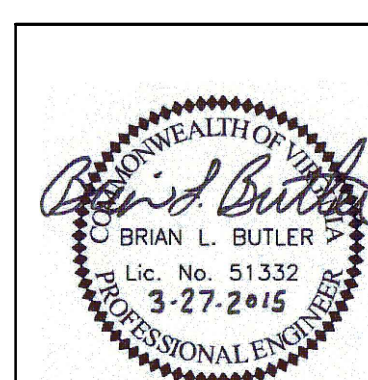
4 NEW SCADA PANEL ELEVATION
SCALE: NOT TO SCALE

CONDUIT/CABLE SCHEDULE	
(A)	ANTENNA CABLE, REFER TO W-01 DETAIL A
(B)	4 #14 STP IN 1-1/2" C 40 #14 IN 1-1/2" C
(C)	2 #14 STP IN 3/4" C
(D)	2 #12, 1 #12 GND IN 3/4" C



ISSUE	DATE	DESCRIPTION
1	MAR 27 2015	CONFORMED DRAWINGS
0	DEC 2014	BID

PROJECT MANAGER:	D. FOOTE
DESIGNED BY:	B. BUTLER
DRAWN BY:	G. BUI
PROJECT NUMBER:	8582



**HAMPTON ROADS SANITATION DISTRICT
VIRGINIA BEACH, VIRGINIA**

**INTERCEPTOR SYSTEMS PUMP STATION
CONTROL AND SCADA**

**WINDSOR
PRESSURE CONTROL VALVE
NO 190
SITE PLAN**



FILENAME	05190ES30.DWG
SCALE	AS NOTED

DRAWING NUMBER	ES-30
SHEET	116 OF 256