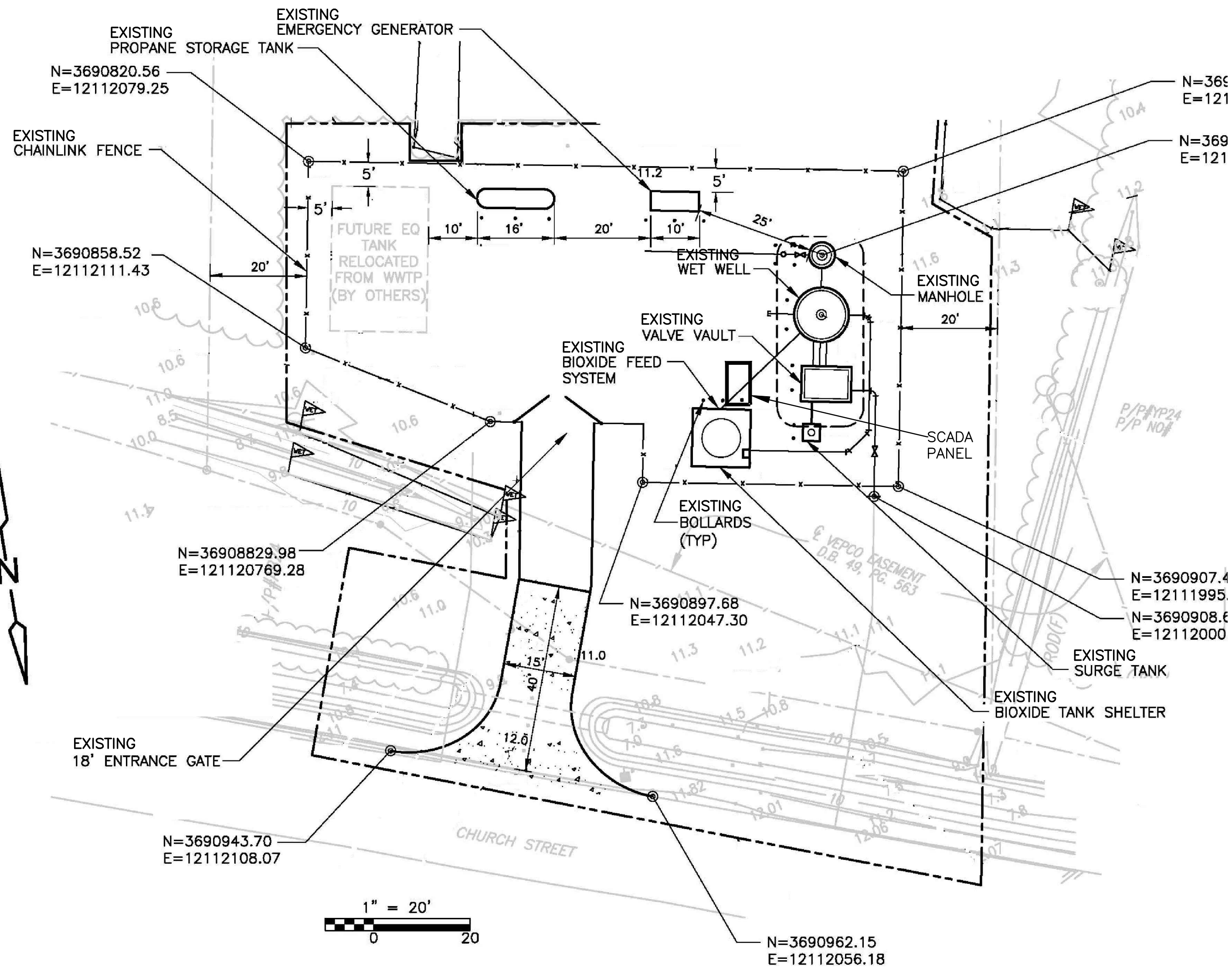


NOTES 1, 6

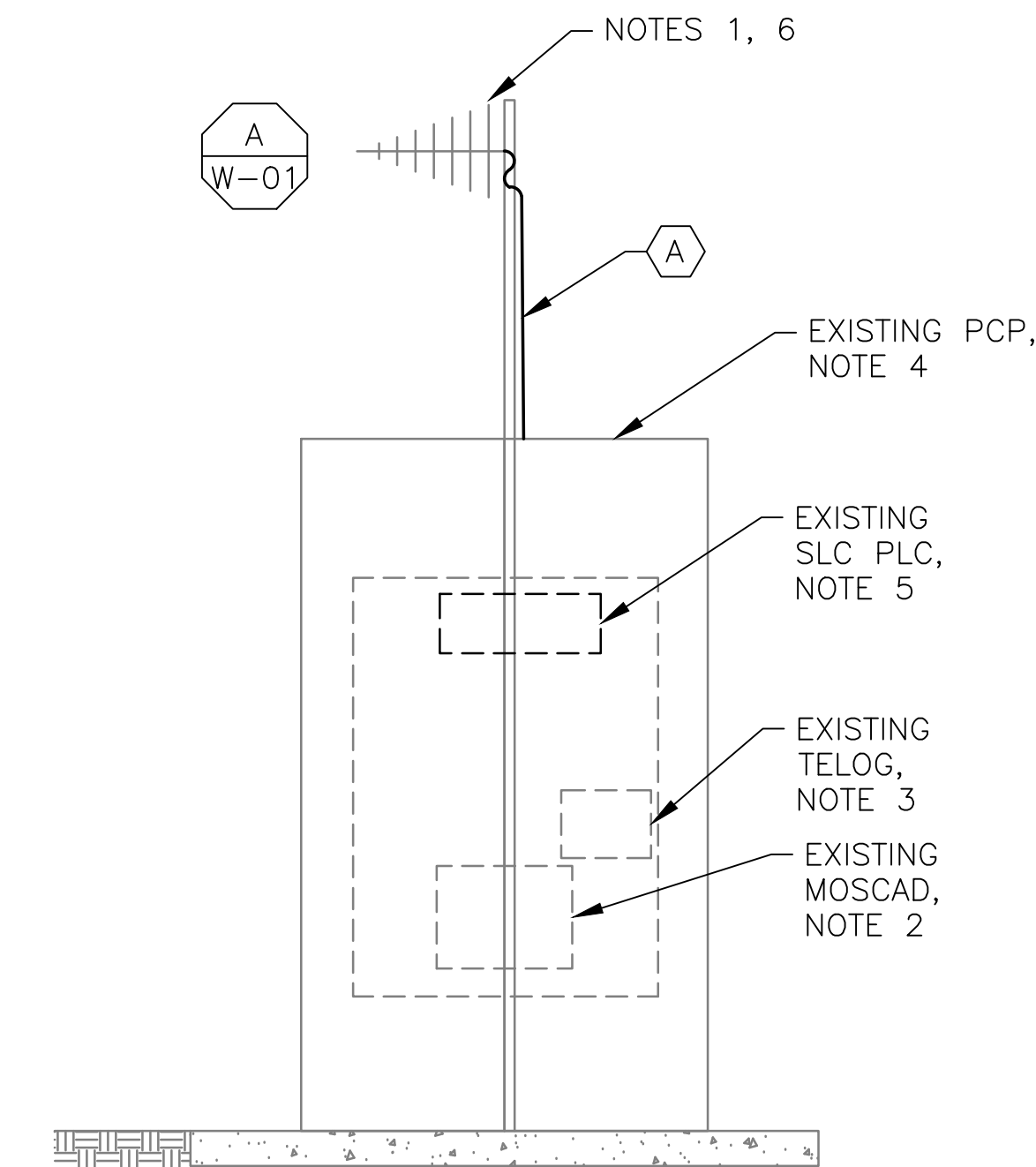


**2 ANTENNA LOCATION**  
SCALE: NOT TO SCALE

- NOTES:**
- EXISTING YAGI ANTENNA AND CABLE TO BE REMOVED AFTER SUCCESSFUL INSTALLATION OF THE NEW RTU, RADIO AND ANTENNA.
  - EXISTING MOSCAD UNIT AND RADIO TO BE REMOVED FROM EXISTING PANEL.
  - EXISTING TELOG PANEL TO REMAIN. REMOVE EXISTING ANALOG AND DIGITAL INPUTS BETWEEN MOSCAD UNIT AND TELOG UNIT. REPLACE THESE SIGNALS WITH IDENTICAL SIGNALS ORIGINATING FROM THE NEW RTU IF NOT ALREADY IN PLACE WITH THE PLC.
  - REFER TO DRAWING G-12 FOR DETAILS OF THE CONSTRUCTION PHASING REQUIREMENTS.
  - EXISTING SLC PLC SHALL BE REPLACED WITH A NEW RTU.
  - MOVE EXISTING ANTENNA DOWN ON MAST AND INSTALL NEW ANTENNA ON TOP OF MAST. INSTALL NEW ANTENNA CABLE.
  - INSTALL A NEW RADIO.



**1 SITE PLAN**  
SCALE: AS NOTED



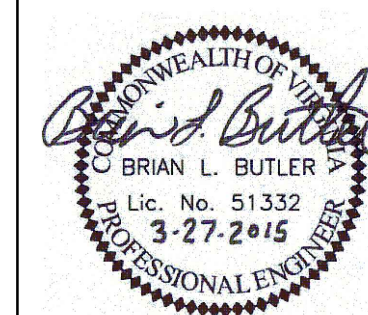
**3 SCADA PANEL INSTALLATION**  
SCALE: NOT TO SCALE

CONDUIT/CABLE SCHEDULE	
(A)	ANTENNA CABLE, REFER TO W-01 DETAIL A
(B)	NOT USED
(C)	NOT USED
(D)	NOT USED
(E)	NOT USED



ISSUE	DATE	DESCRIPTION
1	MAR 27 2015	CONFORMED DRAWINGS
0	DEC 2014	BID

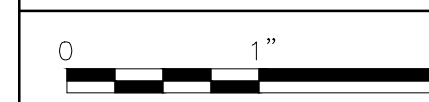
PROJECT MANAGER:	D. FOOTE
DESIGNED BY:	B. BUTLER
DRAWN BY:	G. BUI
PROJECT NUMBER:	8582



**HAMPTON ROADS SANITATION DISTRICT**  
**VIRGINIA BEACH, VIRGINIA**

**INTERCEPTOR SYSTEMS PUMP STATION**  
**CONTROL AND SCADA**

**CHURCH ST**  
**GRAVITY LIFT STATION**  
**NO 38**  
**SITE PLAN**



FILENAME	0638EM38.DWG
SCALE	AS NOTED

DRAWING NUMBER	EM-38
----------------	-------