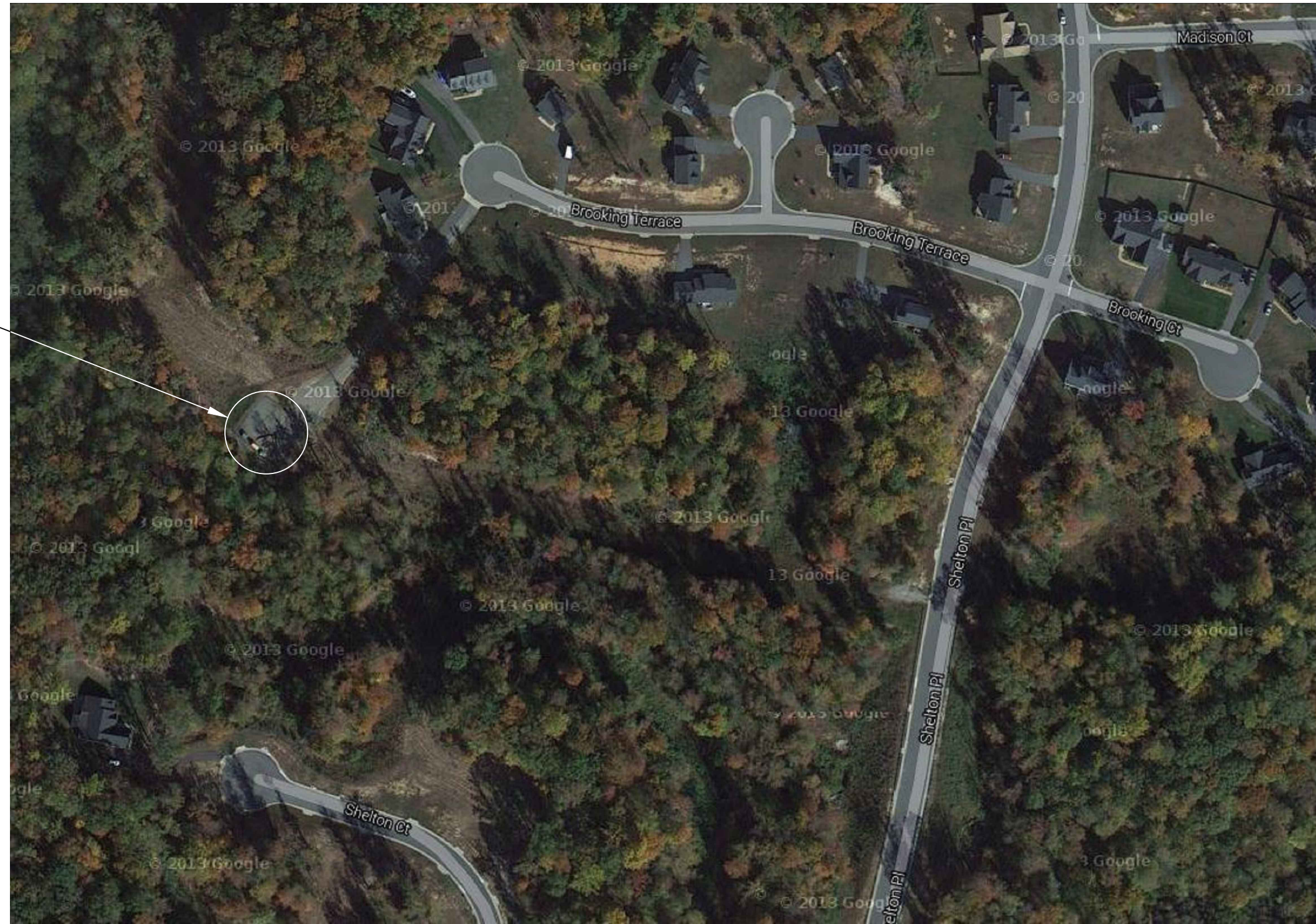
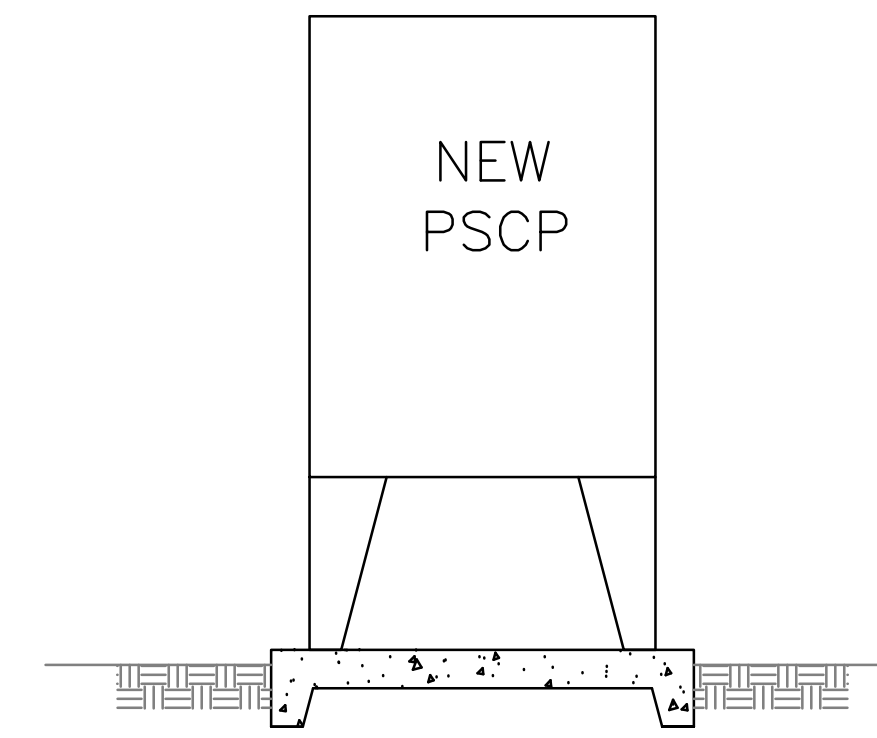


SEE DETAIL 1  
THIS SHEET

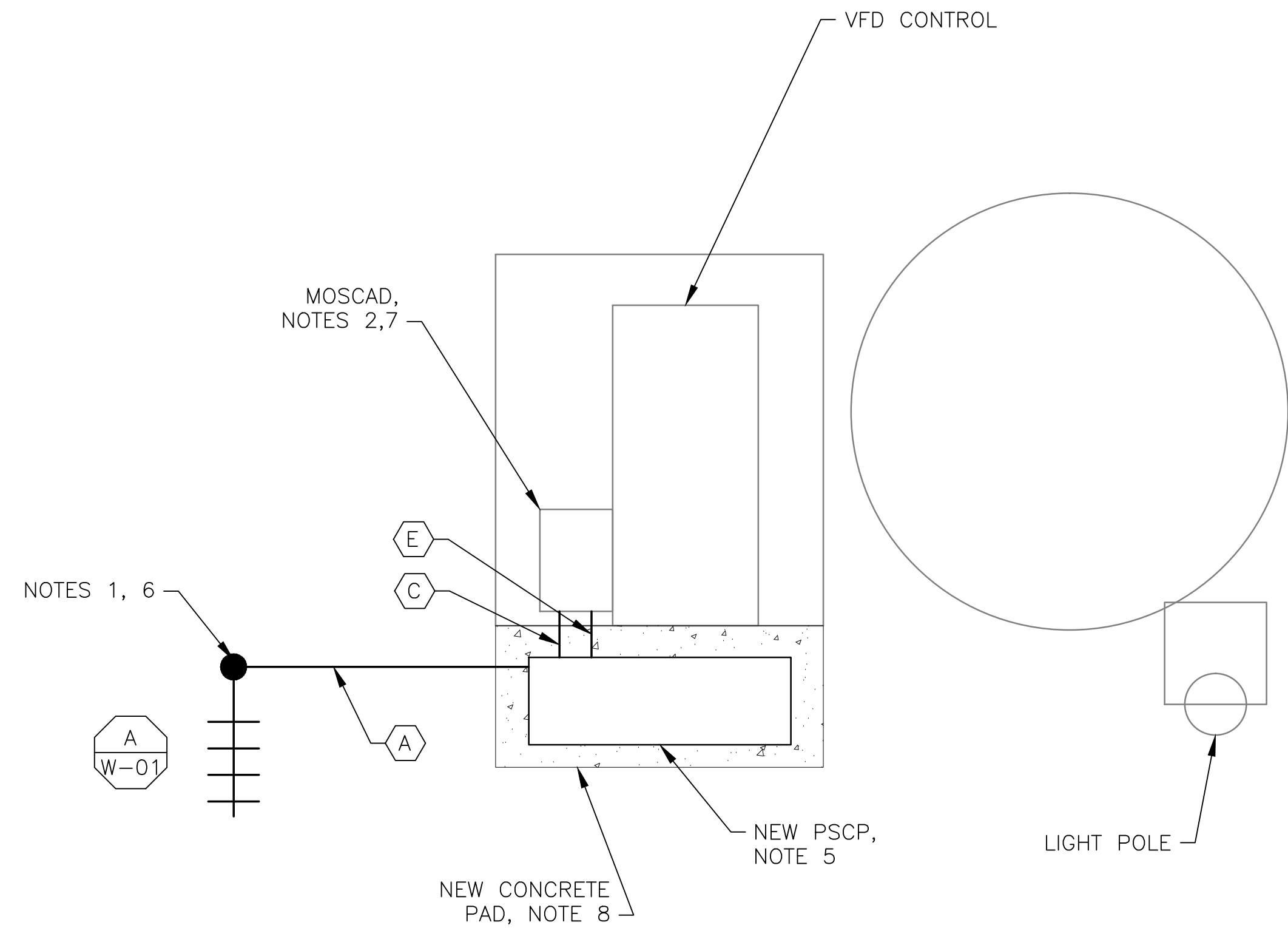


**2 SITE PLAN**  
SCALE: NOT TO SCALE



**3 NEW SCADA PANEL ELEVATION**  
SCALE: NOT TO SCALE

- NOTES:**
- EXISTING YAGI ANTENNA AND CABLE TO BE REMOVED AFTER SUCCESSFUL INSTALLATION OF THE NEW PUMP STATION CONTROL PANEL (PSCP).
  - EXISTING MOSCAD UNIT AND RADIO TO BE REMOVED FROM EXISTING PANEL.
  - NOT USED.
  - NOT USED.
  - REFER TO DRAWING G-11 FOR DETAILS OF THE CONSTRUCTION PHASING REQUIREMENTS FOR THE NEW PSCP.
  - INSTALL NEW ANTENNA ON TOP OF EXISTING STEEL POLE. SHIFT EXISTING ANTENNA DOWN 3'. INSTALL NEW ANTENNA CABLE.
  - PROVIDE NEW TERMINAL BLOCKS IN EXISTING PANEL AND EXTEND EXISTING CONTROL WIRING TO THE NEW PSCP.
  - INSTALL NEW CONCRETE PAD FOR THE NEW PSCP.
  - REFER TO DRAWING G-16 FOR PANEL LAYOUT.



**1 PANEL PLAN**  
SCALE: 3/4" = 1'-0"



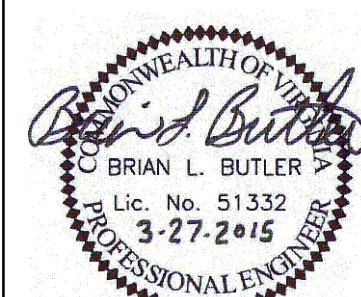
**4 ANTENNA LOCATION**  
SCALE: NOT TO SCALE

CONDUIT/CABLE SCHEDULE	
A	ANTENNA CABLE, REFER TO W-01 DETAIL A
B	NOT USED
C	20 #14 IN 3/4" C
D	NOT USED
E	2 #12, 1 #12 GND IN 3/4" C



ISSUE	DATE	DESCRIPTION
1	MAR 27 2015	CONFORMED DRAWINGS
0	DEC 2014	BID

PROJECT MANAGER:	D. FOOTE
DESIGNED BY:	B. BUTLER
DRAWN BY:	G. BUI
PROJECT NUMBER:	8582



HAMPTON ROADS SANITATION DISTRICT  
VIRGINIA BEACH, VIRGINIA

INTERCEPTOR SYSTEMS PUMP STATION  
CONTROL AND SCADA



FILENAME	0634EM14.DWG
SCALE	AS NOTED

MCCAULEY PARK  
GRAVITY LIFT STATION  
NO 34  
SITE PLAN

DRAWING NUMBER	EM-14
SHEET	159 OF 256