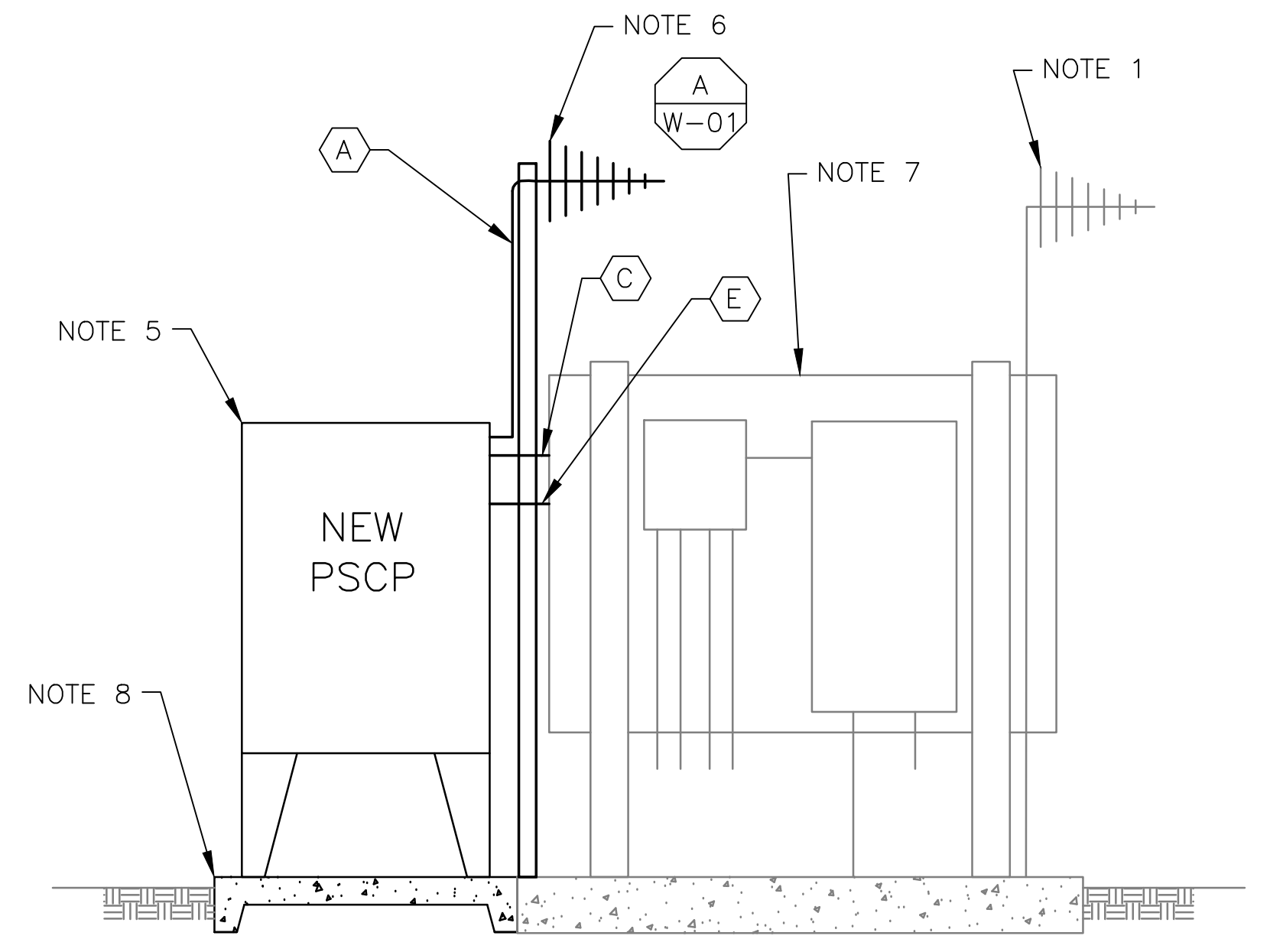


- NOTES:**
- EXISTING YAGI ANTENNA, MAST AND CABLE TO BE REMOVED AFTER SUCCESSFUL INSTALLATION OF THE NEW PUMP STATION CONTROL PANEL (PSCP).
 - EXISTING MOSCAD UNIT AND RADIO TO BE REMOVED FROM EXISTING PANEL.
 - NOT USED.
 - NOT USED.
 - REFER TO DRAWING G-11 FOR DETAILS OF THE CONSTRUCTION PHASING REQUIREMENTS FOR THE NEW PSCP.
 - PROVIDE NEW MAST, ANTENNA CABLE AND ANTENNA.
 - PROVIDE NEW TERMINAL BLOCKS IN EXISTING PANEL AND EXTEND EXISTING CONTROL WIRING TO THE NEW PSCP.
 - INSTALL NEW CONCRETE PAD FOR THE NEW PSCP.
 - REFER TO DRAWING G-16 FOR PANEL LAYOUT.

EXTEND THE ROOF PER DETAIL H ON DRAWING G-42. THE PROFILE AND SHINGLES SHALL MATCH THE EXISTING.

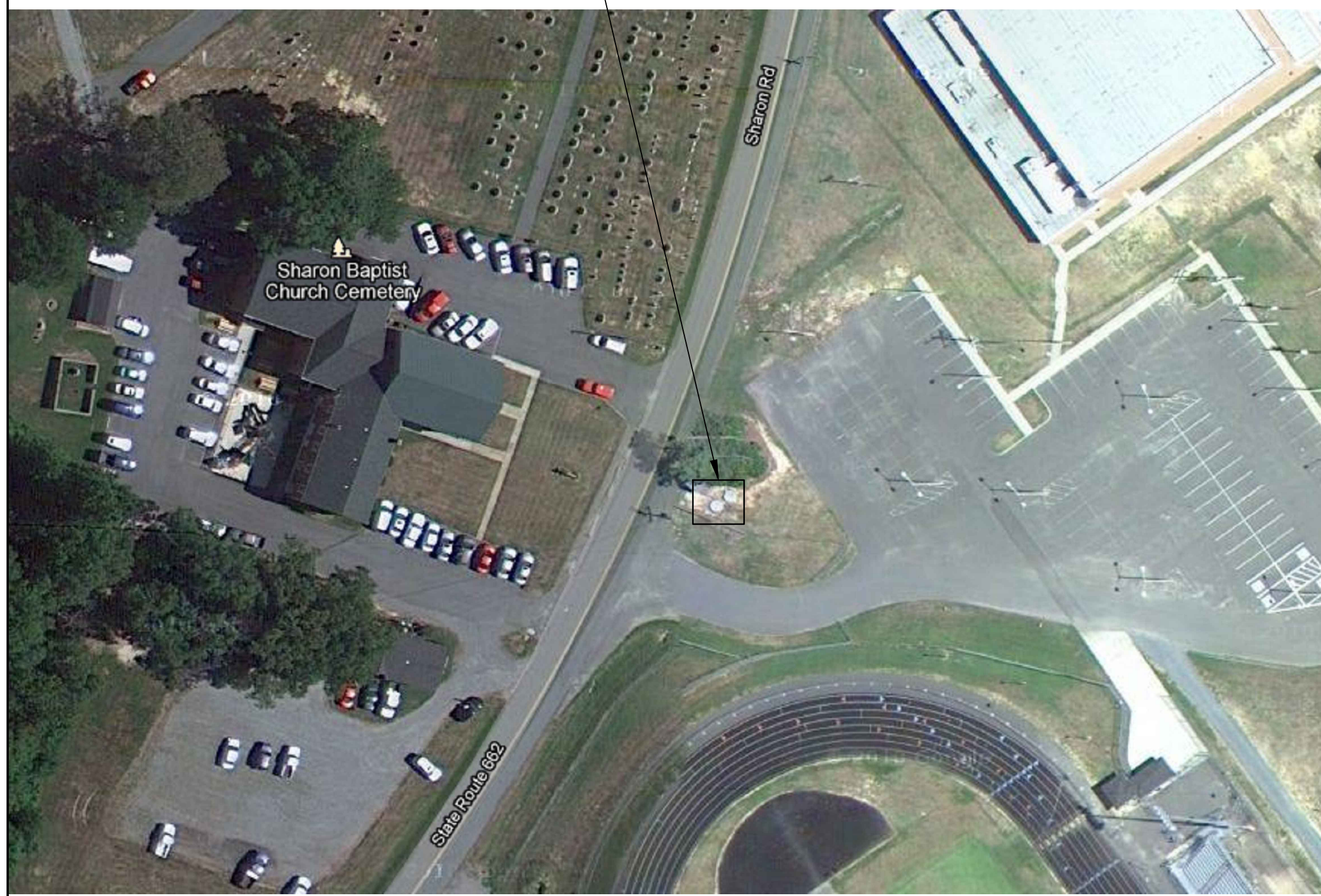


2 EXISTING ANTENNA LOCATION
SCALE: NOT TO SCALE



4 NEW PUMP STATION CONTROL PANEL ELEVATION
SCALE: NOT TO SCALE

SEE DETAIL 4 THIS SHEET



1 SITE PLAN
SCALE: NOT TO SCALE



3 WELL LOCATION
SCALE: NOT TO SCALE

CONDUIT/CABLE SCHEDULE	
A	ANTENNA CABLE, REFER TO W-01 DETAIL A
B	NOT USED
C	30 #14 IN 1" C
D	NOT USED
E	2 #12, 1 #12 GND IN 3/4" C



ISSUE	DATE	DESCRIPTION
1	MAR 27 2015	CONFORMED DRAWINGS
0	DEC 2014	BID

PROJECT MANAGER:	D. FOOTE
DESIGNED BY:	B. BUTLER
DRAWN BY:	G. BUI
PROJECT NUMBER:	8582



HAMPTON ROADS SANITATION DISTRICT
VIRGINIA BEACH, VIRGINIA

INTERCEPTOR SYSTEMS PUMP STATION
CONTROL AND SCADA

SHARON ROAD GRAVITY LIFT STATION NO 25 SITE PLAN

0 1" 2"

FILENAME	0625EM11.DWG	DRAWING NUMBER	EM-11
SCALE	NTS	SHEET	156 OF 256