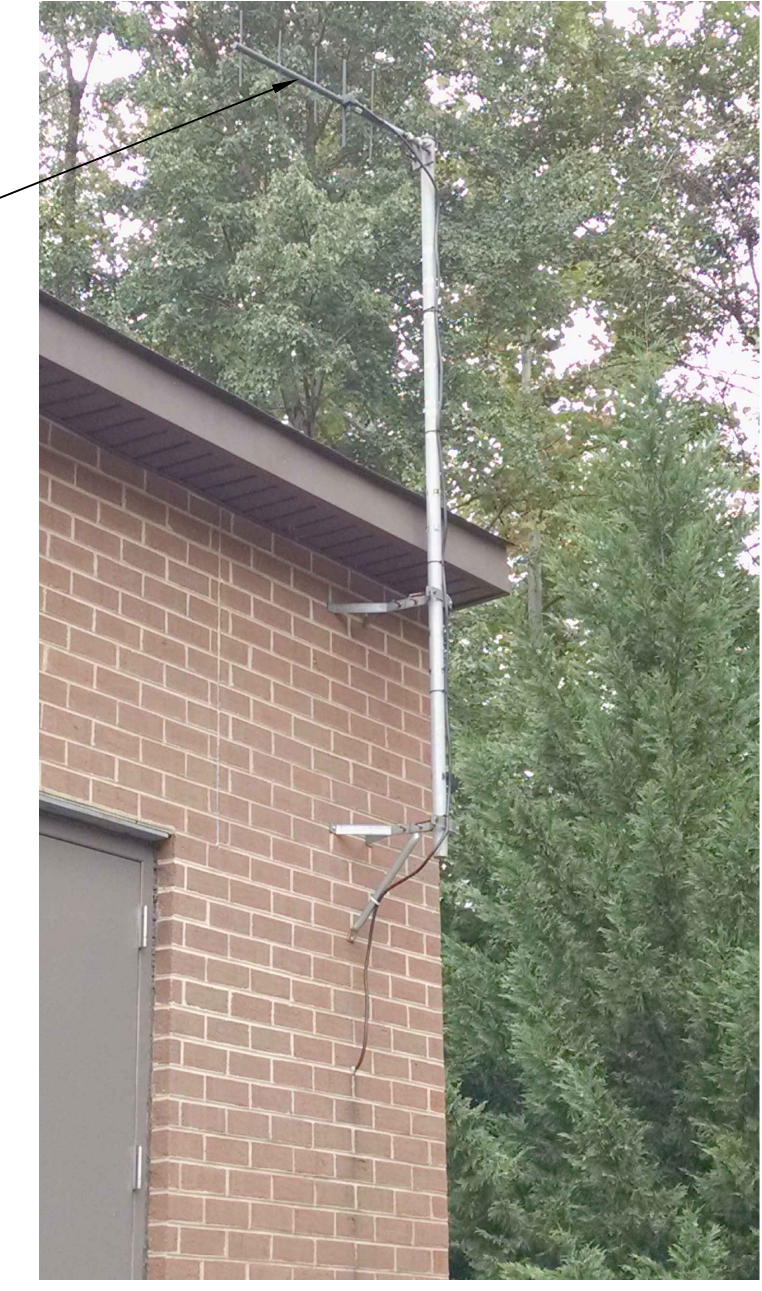


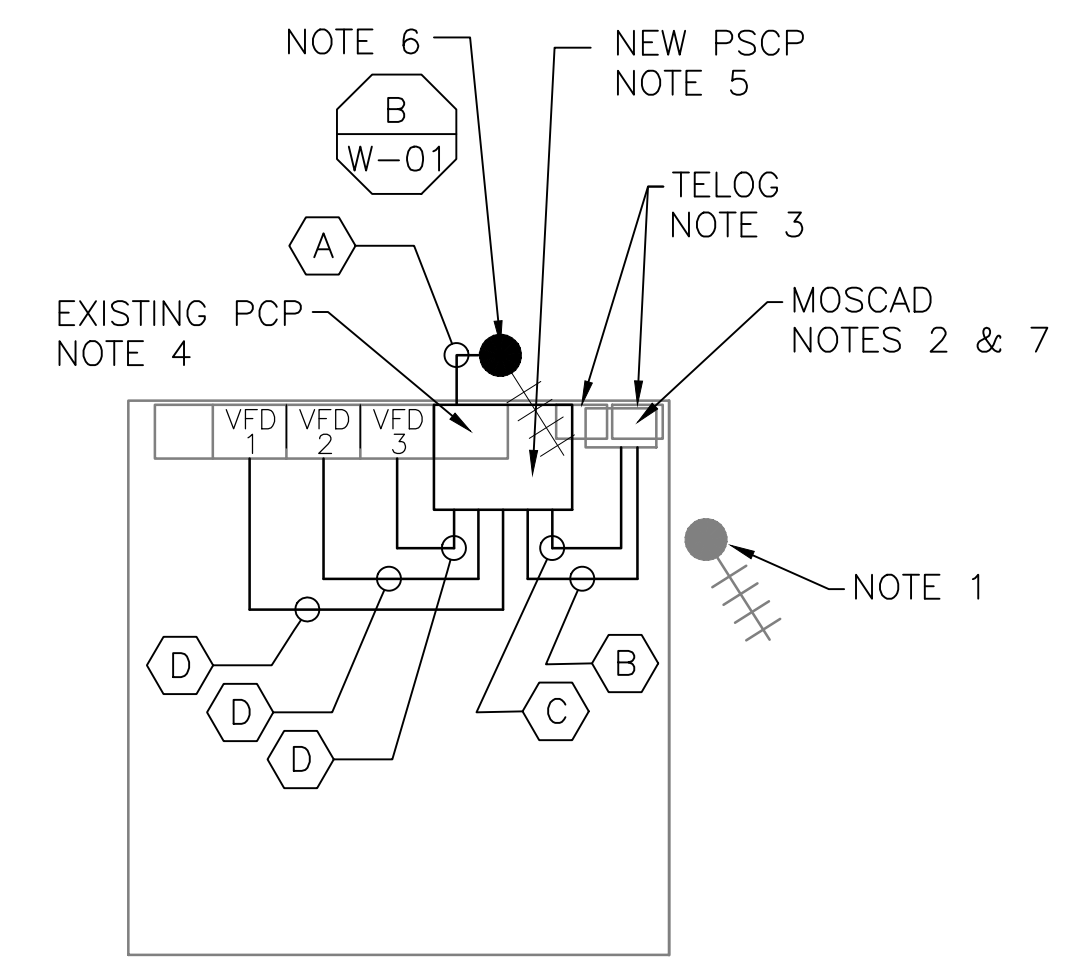
5 SITE PLAN
SCALE: 1/4" = 1'-0"



2 EXISTING ANTENNA LOCATION
SCALE: NOT TO SCALE

- NOTES:**
- EXISTING YAGI ANTENNA, MAST AND CABLE TO BE REMOVED AFTER SUCCESSFUL INSTALLATION OF THE NEW PUMP STATION CONTROL PANEL (PSCP).
 - EXISTING MOSCAD UNIT AND RADIO TO BE REMOVED FROM EXISTING PANEL.
 - EXISTING TELOG PANEL TO BE RELOCATED AND MOUNTED TO THE SPACE ADJACENT TO THE NEW PSCP. EXACT LOCATION TO BE COORDINATED WITH HRSD. REMOVE EXISTING ANALOG AND DIGITAL INPUTS BETWEEN MOSCAD UNIT AND TELOG UNIT. REPLACE THESE SIGNALS WITH IDENTICAL SIGNALS ORIGINATING FROM THE NEW PSCP.
 - REMOVE EXISTING PUMP CONTROL PANEL AFTER INSTALLATION OF THE TEMPORARY CONTROL PANEL. REWIRE CONTROLS TO THE NEW PSCP AS SHOWN ON THE DRAWINGS.
 - REFER TO DRAWING G-12 FOR DETAILS OF THE CONSTRUCTION PHASING REQUIREMENTS FOR THE NEW PSCP. REFER TO DRAWING G-13 FOR DETAILS ON CONSTRUCTION PHASING REQUIREMENTS FOR TEMPORARY MOSCAD/TELOG.
 - PROVIDE NEW STEEL POLE AS SPECIFIED IN SECTION 17375, INSTALL NEW ANTENNA CABLE AND ANTENNA.
 - PROVIDE NEW TERMINAL BLOCKS IN EXISTING PANEL AND EXTEND EXISTING CONTROL WIRING TO THE NEW PSCP.
 - REFER TO DRAWING G-14 FOR PANEL LAYOUT.
 - EXTEND EXISTING HOUSEKEEPING PAD FOR NEW PSCP.

CONDUIT/CABLE SCHEDULE	
(A)	ANTENNA CABLE
	2 #12, 1 #12 GND IN 3/4" C
(B)	10 #14 IN 3/4" C
	9 STP IN 1-1/2" C
(C)	44 #14 IN 1-1/2" C
	9 STP IN 1-1/2" C
(D)	18 #14 IN 3/4" C
	3 STP IN 3/4" C



1 FLOOR PLAN
SCALE: 1/4" = 1'-0"



3 EXISTING MOSCAD PANEL
SCALE: NOT TO SCALE

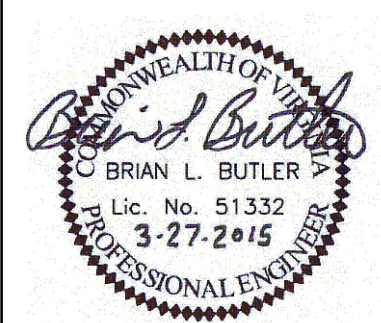


4 EXISTING CONTROL PANEL
SCALE: NOT TO SCALE



ISSUE	DATE	DESCRIPTION
1	MAR 27 2015	CONFORMED DRAWINGS
0	DEC 2014	BID

PROJECT MANAGER:	D. FOOTE
DESIGNED BY:	B. BUTLER
DRAWN BY:	G. BUI
PROJECT NUMBER:	8582



HAMPTON ROADS SANITATION DISTRICT
VIRGINIA BEACH, VIRGINIA

INTERCEPTOR SYSTEMS PUMP STATION
CONTROL AND SCADA



FILENAME: 04222EN38.DWG
SCALE: AS NOTED

DRAWING NUMBER: EN-38
SHEET 82 OF 256