

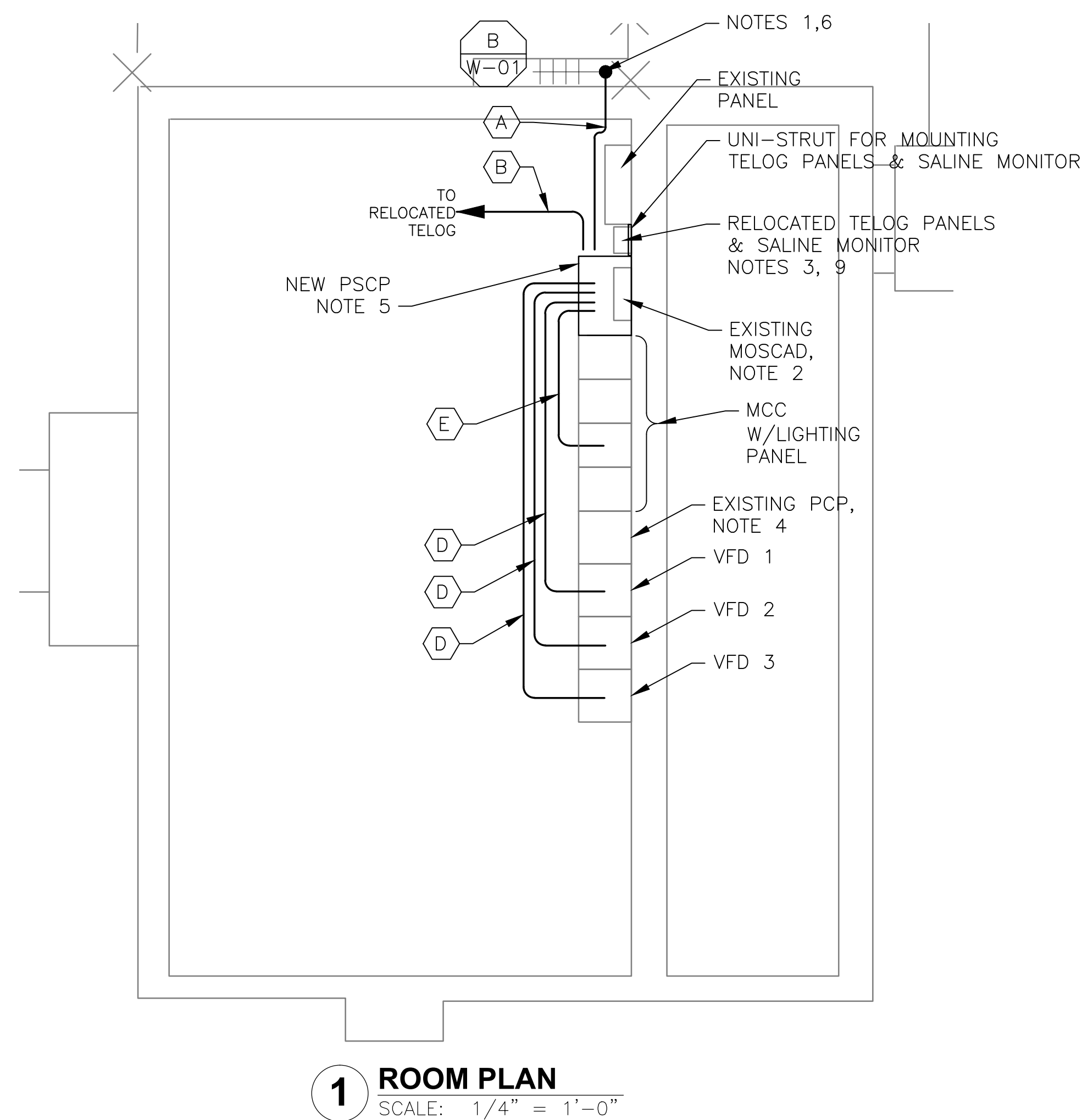
5 SITE PLAN
SCALE: 1" = 10'-0"



2 EXISTING ANTENNA LOCATION
SCALE: NOT TO SCALE

NOTES:

1. EXISTING YAGI ANTENNA AND CABLE TO BE REMOVED AFTER SUCCESSFUL INSTALLATION OF THE NEW PUMP STATION CONTROL PANEL (PSCP).
2. EXISTING MOSCAD PANEL AND TERMINATION PANEL TO BE TEMPORARILY RELOCATED; THEN REMOVED FROM SITE AFTER INSTALLATION AND TESTING OF THE NEW PSCP. REFER TO THE I/O LIST FOR EXISTING MOSCAD ANALOG AND DIGITAL I/O SIGNALS WHICH WILL BE RE-TERMINATED WITHIN THE NEW PSCP.
3. EXISTING TELOG PANELS TO BE RELOCATED AND MOUNTED ON A NEW UNI-STRUT FRAMEWORK IN THE SPACE BETWEEN AN EXISTING PANEL AND THE NEW PSCP. COORDINATE WITH HRSD. REMOVE EXISTING ANALOG AND DIGITAL INPUTS BETWEEN MOSCAD UNIT AND TELOG UNIT, REPLACE THESE SIGNALS WITH IDENTICAL SIGNALS ORIGINATING FROM THE NEW PSCP.
4. EXISTING PUMP CONTROL PANEL TO REMAIN. REMOVE EXISTING PLC'S, RELAYS, AND CONTROL EQUIPMENT AFTER INSTALLATION AND TESTING OF THE NEW PSCP.
5. REFER TO DRAWING G-13 FOR DETAILS OF THE CONSTRUCTION PHASING REQUIREMENTS FOR THE NEW PSCP.
6. MOVE EXISTING ANTENNA DOWN ON MAST TO ROOF LEVEL AND INSTALL NEW ANTENNA ON TOP OF MAST. INSTALL NEW ANTENNA CABLE.
7. RELOCATE THE EXISTING AIR COMPRESSOR TO NORTH (LEFT) OF ITS CURRENT LOCATION. COORDINATE WITH HRSD.
8. REFER TO DRAWING G-14 FOR PANEL LAYOUT.
9. RELOCATE THE SALINE MONITOR TO A NEW UNI-STRUT FRAMEWORK ALONG WITH THE TWO TELOG PANELS. THE UNI-STRUT FRAMEWORK SHALL BE MOUNTED BETWEEN AN EXISTING PANEL AND THE NEW PSCP AS INDICATED ON THE DRAWING.
10. EXTEND EQUIPMENT PAD TO ACCOMMODATE NEW PSCP.



1 ROOM PLAN
SCALE: 1/4" = 1'-0"



3 EXISTING MOSCAD PANEL
SCALE: NOT TO SCALE



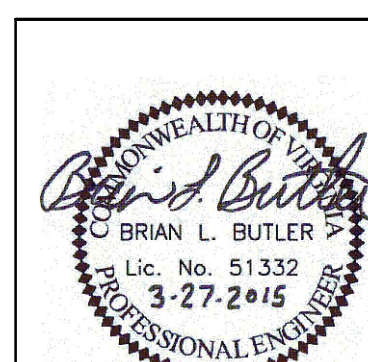
4 EXISTING CONTROL PANEL
SCALE: NOT TO SCALE

CONDUIT/CABLE SCHEDULE	
A	ANTENNA CABLE
B	2 #12, 1 #12 GND IN 3/4" C 12 #14 IN 3/4" C 9 STP IN 1-1/2" C
C	NOT USED
D	18 #14 IN 3/4" C 3 STP IN 3/4" C
E	2 #12, 1 #12 GND IN 3/4" C



ISSUE	DATE	DESCRIPTION
1	MAR 27 2015	CONFORMED DRAWINGS
0	DEC 2014	BID

PROJECT MANAGER:	D. FOOTE
DESIGNED BY:	B. BUTLER
DRAWN BY:	G. BUI
PROJECT NUMBER:	8582



HAMPTON ROADS SANITATION DISTRICT
VIRGINIA BEACH, VIRGINIA

INTERCEPTOR SYSTEMS PUMP STATION
CONTROL AND SCADA

**WILLIARD AVENUE
GRAVITY LIFT STATION
NO 225
SITE PLAN**

0 1" 2"

FILENAME	04225EN41.DWG	DRAWING NUMBER	EN-41
SCALE	AS NOTED	SHEET	85 OF 256