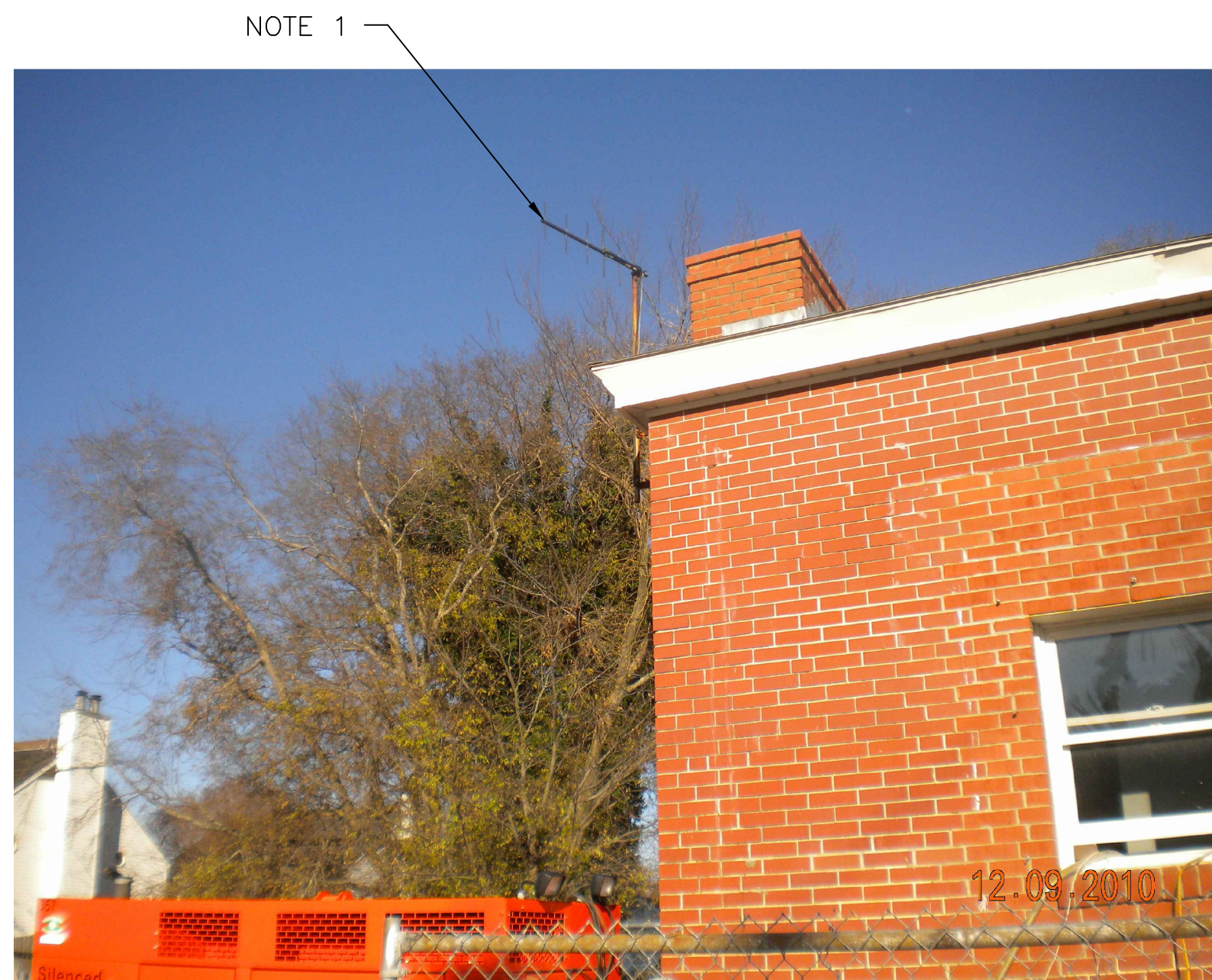
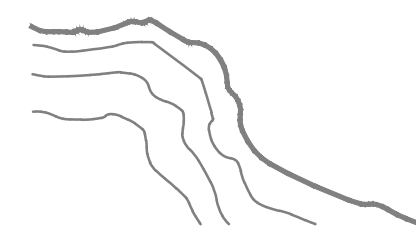


HAMPTON RIVER

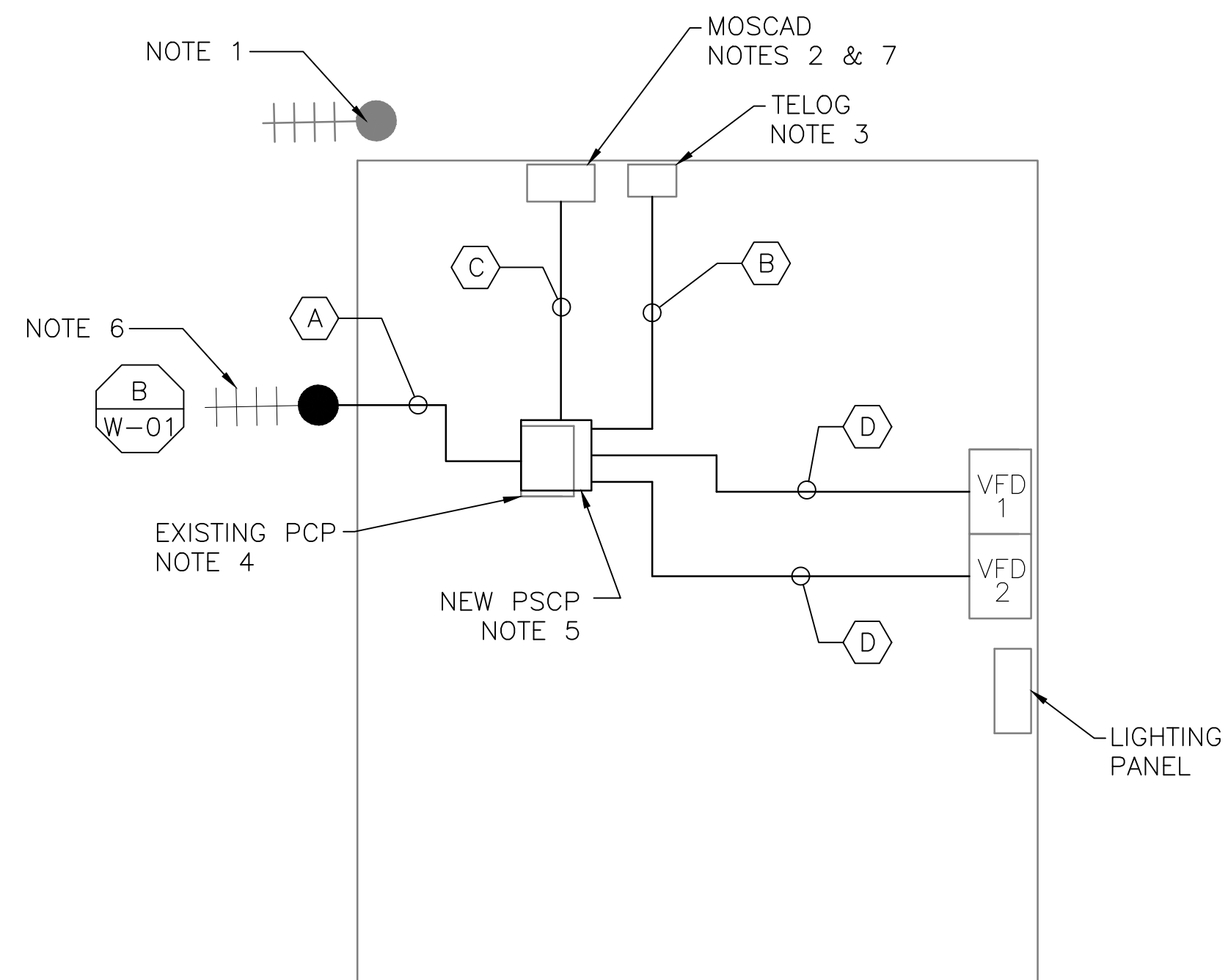


**NOTES:**

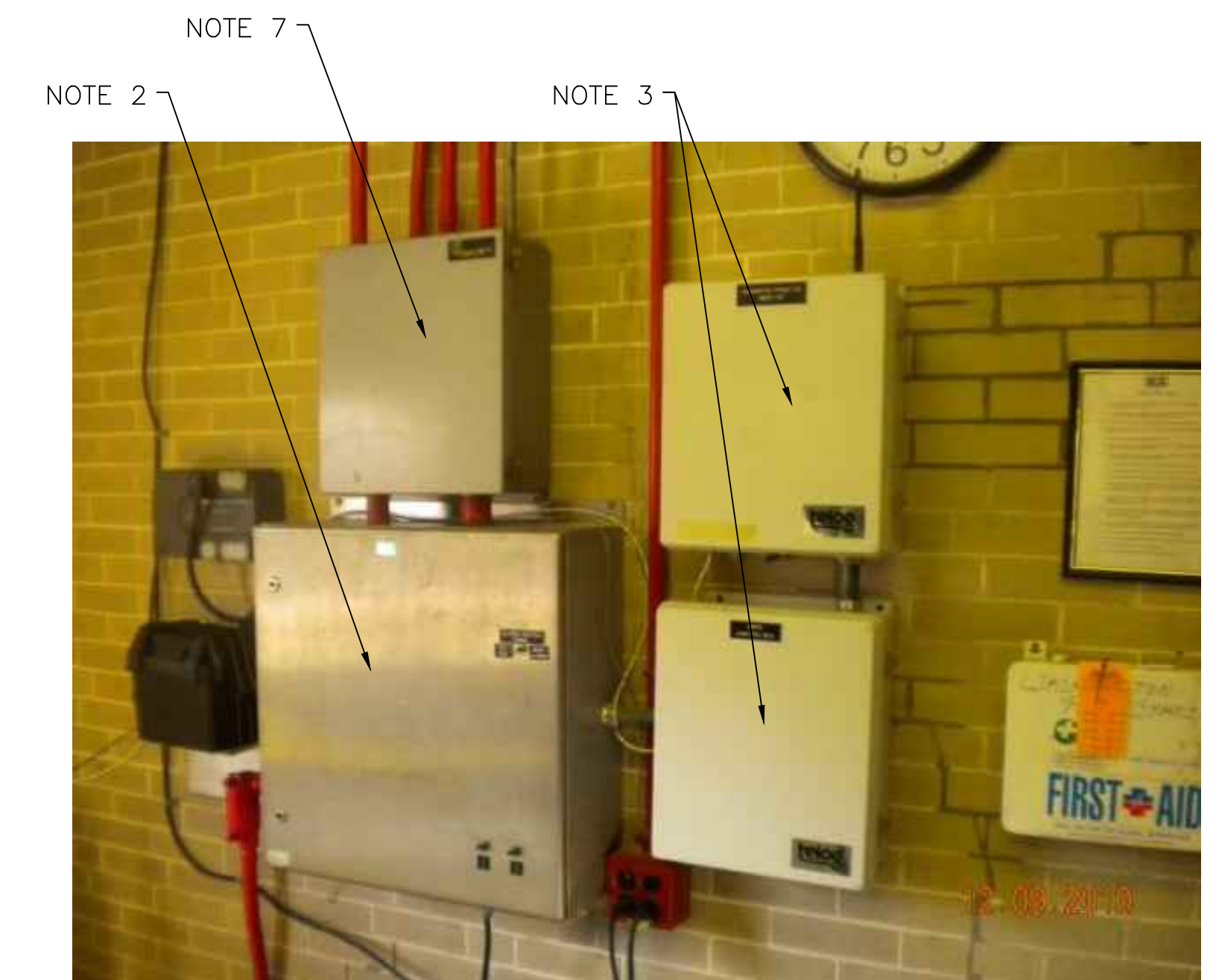
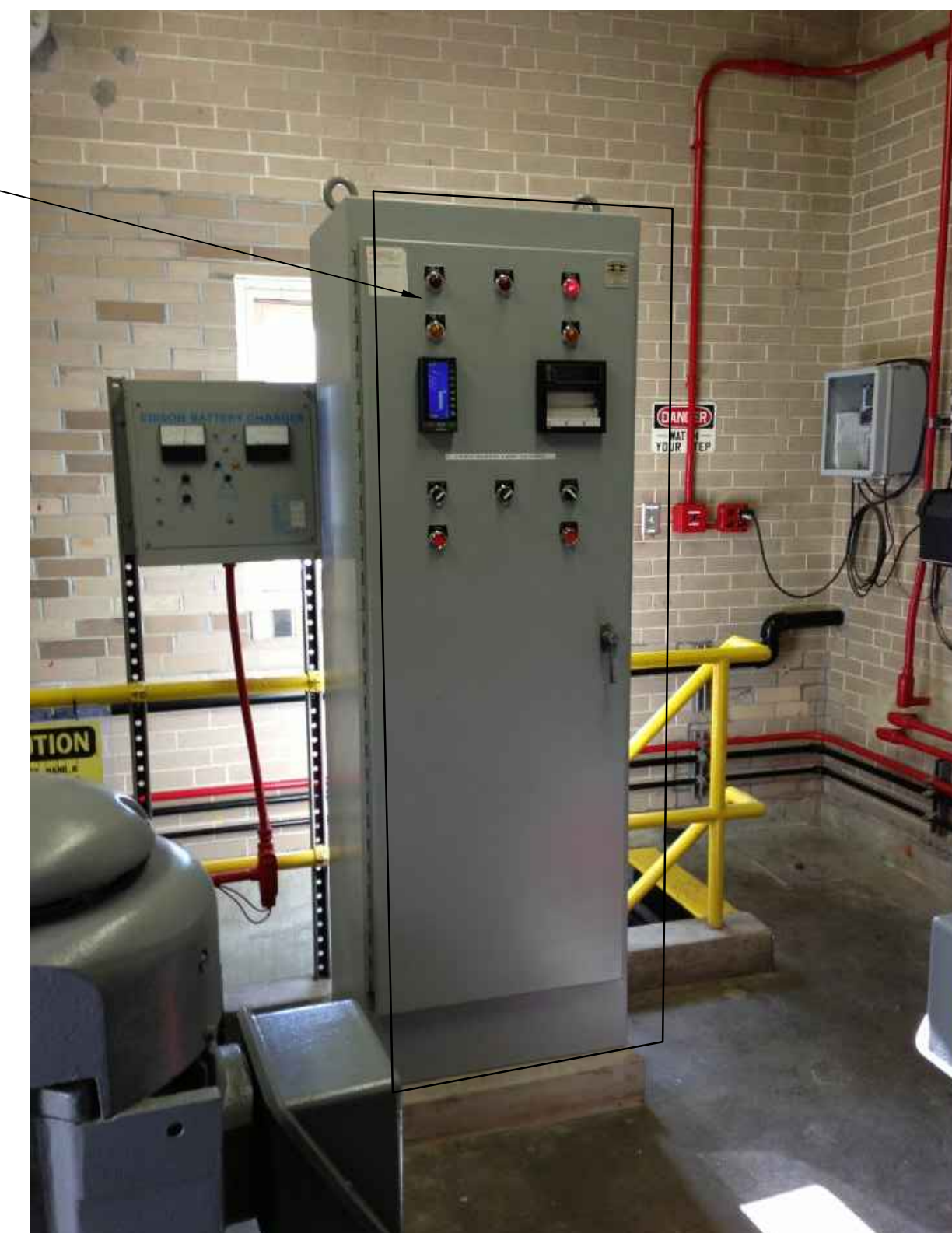
- EXISTING YAGI ANTENNA, MAST AND CABLE TO BE REMOVED AFTER SUCCESSFUL INSTALLATION OF THE NEW PUMP STATION CONTROL PANEL (PSCP).
- EXISTING MOSCAD UNIT AND RADIO TO BE REMOVED FROM EXISTING PANEL.
- EXISTING TELOG PANEL TO REMAIN. REMOVE EXISTING ANALOG AND DIGITAL INPUTS BETWEEN MOSCAD UNIT AND TELOG UNIT. REPLACE THESE SIGNALS WITH IDENTICAL SIGNALS ORIGINATING FROM THE NEW PSCP.
- REMOVE EXISTING PUMP CONTROL PANEL AFTER INSTALLATION OF THE TEMPORARY CONTROL PANEL. REWIRE CONTROLS TO THE NEW PSCP AS SHOWN ON THE DRAWINGS.
- REFER TO DRAWING G-12 FOR DETAILS OF THE CONSTRUCTION PHASING REQUIREMENTS FOR THE NEW PSCP.
- INSTALL NEW MAST, ANTENNA CABLE AND ANTENNA.
- PROVIDE NEW TERMINAL BLOCKS IN EXISTING PANEL AND EXTEND EXISTING CONTROL WIRING TO THE NEW PSCP.
- REFER TO DRAWING G-14 FOR PANEL LAYOUT.
- EXTEND EQUIPMENT PAD FOR LARGER NEW PSCP. MOVE NEW PSCP 2 INCHES TO THE WEST (RIGHT) TO ALLOW FOR DOOR CLEARANCE WITH THE PUMP MOTOR.

**CONDUIT/CABLE SCHEDULE**

Symbol	Description
A	ANTENNA CABLE
	2 #12, 1 #12 GND IN 3/4" C
B	6 #14 IN 3/4" C
	4 STP IN 3/4" C
C	52 #14 IN 1-1/2" C
	4 STP IN 3/4" C
D	14 #14 IN 3/4" C
	3 STP IN 3/4" C

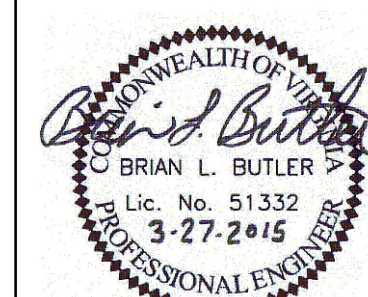


NOTES 4,5,8,9  
24"W X 24"D X 90"H



ISSUE	DATE	DESCRIPTION
1	MAR 27 2015	CONFORMED DRAWINGS
0	DEC 2014	BID

PROJECT MANAGER:	D. FOOTE
DESIGNED BY:	B. BUTLER
DRAWN BY:	G. BUI
PROJECT NUMBER:	8582



HAMPTON ROADS SANITATION DISTRICT  
VIRGINIA BEACH, VIRGINIA

INTERCEPTOR SYSTEMS PUMP STATION  
CONTROL AND SCADA

WASHINGTON ST  
GRAVITY LIFT STATION  
NO 223  
SITE PLAN



FILENAME	04223EN39.DWG
SCALE	AS NOTED

DRAWING NUMBER	EN-39
----------------	-------