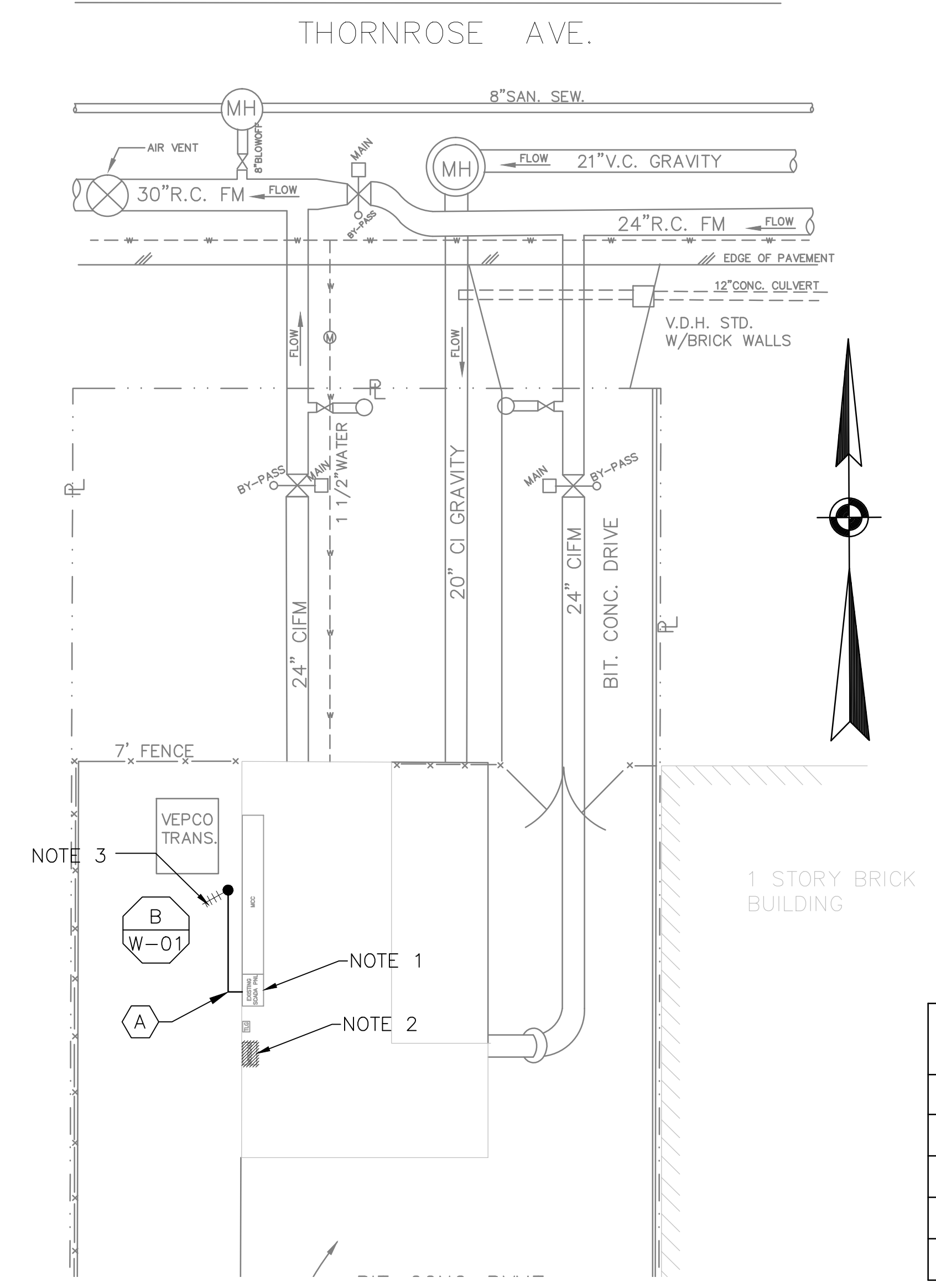


- NOTES:**
- CONTROL PANEL HAS BEEN RECENTLY UPGRADED. REMOVE EXISTING PLC/OIT AND INSTALL NEW RTU/OIT AND RADIO IN THE EXISTING CONTROL PANEL.
 - REMOVE EXISTING MOSCAD RTU PANEL AND APPURTENANCES.
 - PROVIDE A NEW ANTENNA AND ANTENNA CABLE MOUNTED AT THE TOP OF THE EXISTING MAST. THE EXISTING YAGI ANTENNA AND CABLE SHALL BE LOWERED TO THE BOTTOM OF THE MAST AND THEN REMOVED AFTER SUCCESSFUL INSTALLATION OF THE NEW RTU, RADIO AND ANTENNA CABLE.
 - REFER TO DRAWING G-12 FOR DETAILS OF THE CONSTRUCTION PHASING REQUIREMENTS.



1 SITE PLAN
SCALE: 1" = 10'

CONDUIT/CABLE SCHEDULE	
(A)	ANTENNA CABLE
(B)	NOT USED
(C)	NOT USED
(D)	NOT USED
(E)	NOT USED

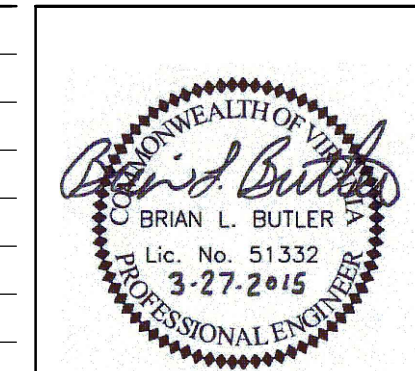


2 ANTENNA LOCATION
SCALE: NOT TO SCALE



ISSUE	DATE	DESCRIPTION
1	MAR 27 2015	CONFORMED DRAWINGS
0	DEC 2014	BID

PROJECT MANAGER:	D. FOOTE
DESIGNED BY:	B. BUTLER
DRAWN BY:	G. BUI
PROJECT NUMBER:	8582



HAMPTON ROADS SANITATION DISTRICT
VIRGINIA BEACH, VIRGINIA

INTERCEPTOR SYSTEMS PUMP STATION
CONTROL AND SCADA

LANGLEY CIRCLE
GRAVITY LIFT STATION
NO 217
SITE PLAN

FILENAME	04217EN29.DWG	DRAWING NUMBER	EN-29
SCALE	1" = 10'	SHEET	73 OF 256