

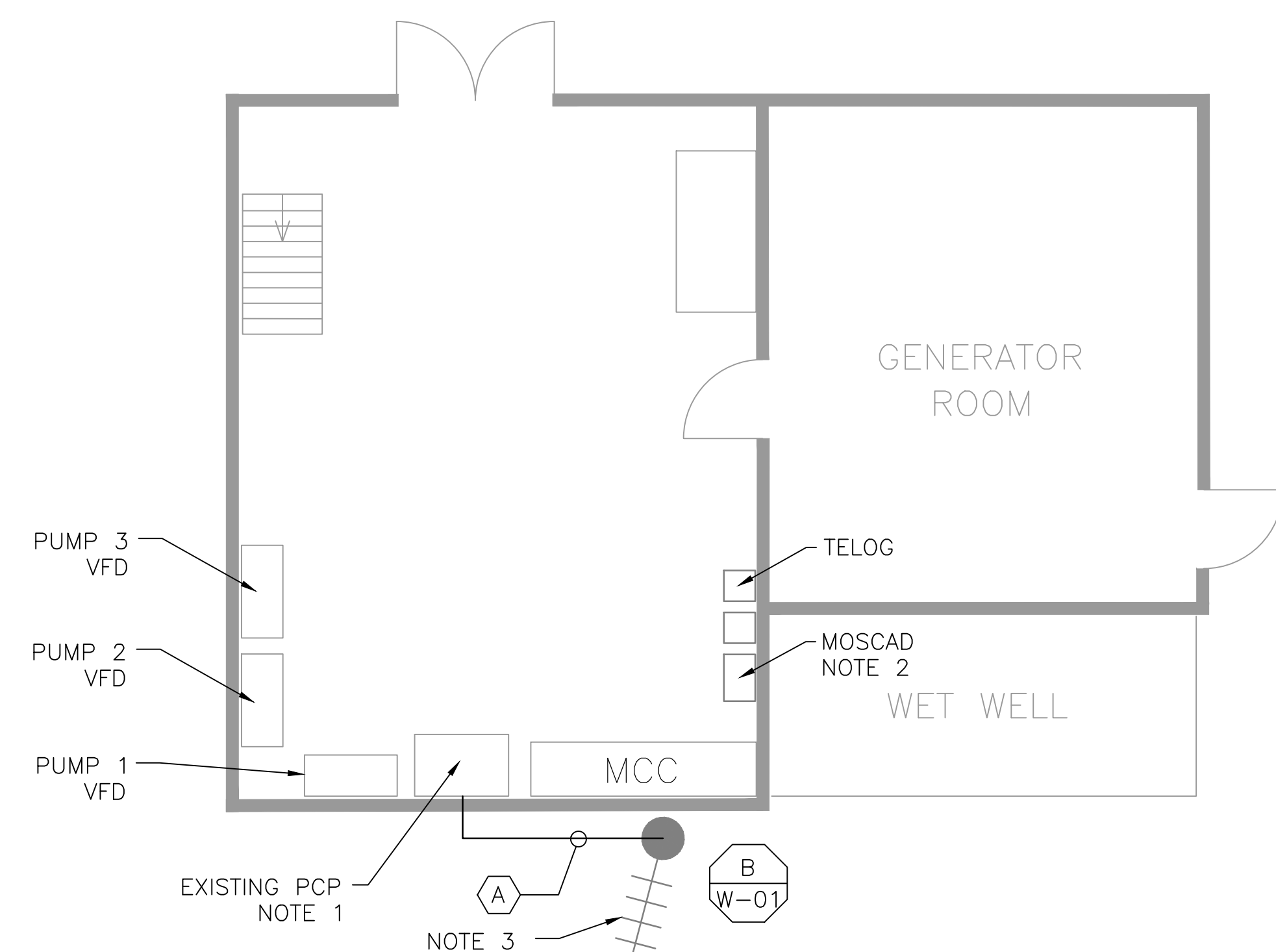
5 SITE PLAN
SCALE: 1/8" = 1'-0"



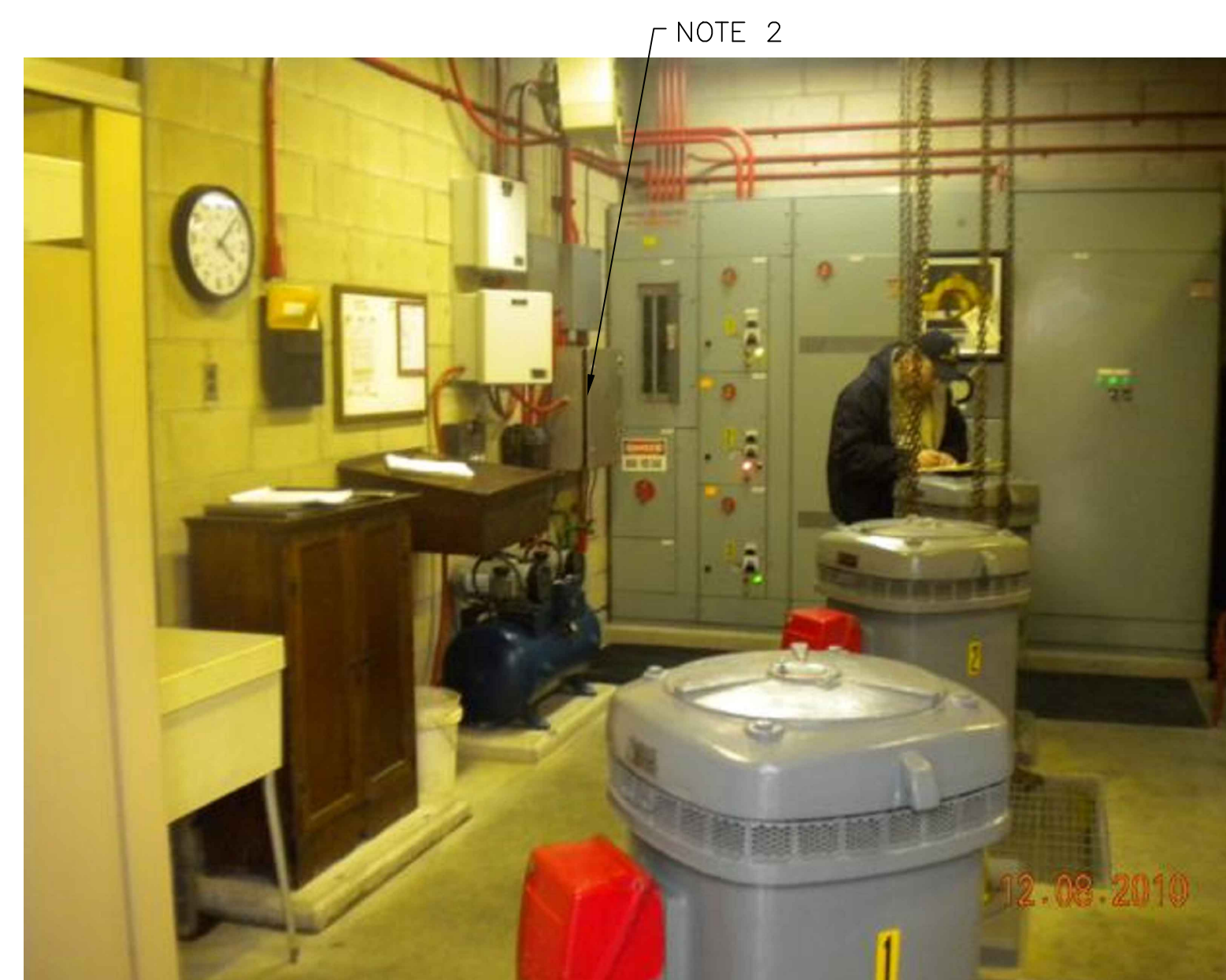
2 EXISTING ANTENNA LOCATION
SCALE: NOT TO SCALE

NOTES:

- CONTROL PANEL HAS BEEN RECENTLY UPGRADED. REMOVE EXISTING PLC, OIT AND INSTALL NEW RTU, OIT AND RADIO IN THE EXISTING CONTROL PANEL.
- REMOVE EXISTING MOSCAD RTU AND APPURTENANCES.
- MOVE EXISTING ANTENNA DOWN ON MAST TO ROOF LEVEL AND INSTALL NEW ANTENNA ON TOP OF MAST. INSTALL NEW ANTENNA CABLE. EXISTING RADIO, YAGI ANTENNA AND CABLE TO BE REMOVED AFTER SUCCESSFUL INSTALLATION OF THE NEW RTU, RADIO, ANTENNA AND ANTENNA CABLE.



1 FLOOR PLAN
SCALE: 3/8" = 1'-0"



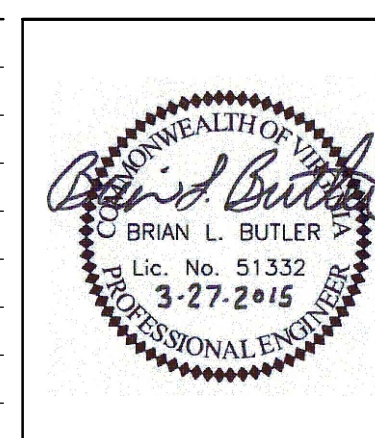
3 EXISTING MOSCAD PANEL
SCALE: NOT TO SCALE

CONDUIT/CABLE SCHEDULE	
(A)	ANTENNA CABLE
(B)	NOT USED
(C)	NOT USED
(D)	NOT USED
(E)	NOT USED



ISSUE	DATE	DESCRIPTION
1	MAR 27 2015	CONFORMED DRAWINGS
0	DEC 2014	BID

PROJECT MANAGER:	D. FOOTE
DESIGNED BY:	B. BUTLER
DRAWN BY:	G. BUI
PROJECT NUMBER:	8582



HAMPTON ROADS SANITATION DISTRICT
VIRGINIA BEACH, VIRGINIA

INTERCEPTOR SYSTEMS PUMP STATION
CONTROL AND SCADA

COPELAND
GRAVITY LIFT STATION
NO 209
SITE PLAN



FILENAME	04209EN22.DWG
SCALE	AS NOTED

DRAWING NUMBER	EN-22
----------------	-------