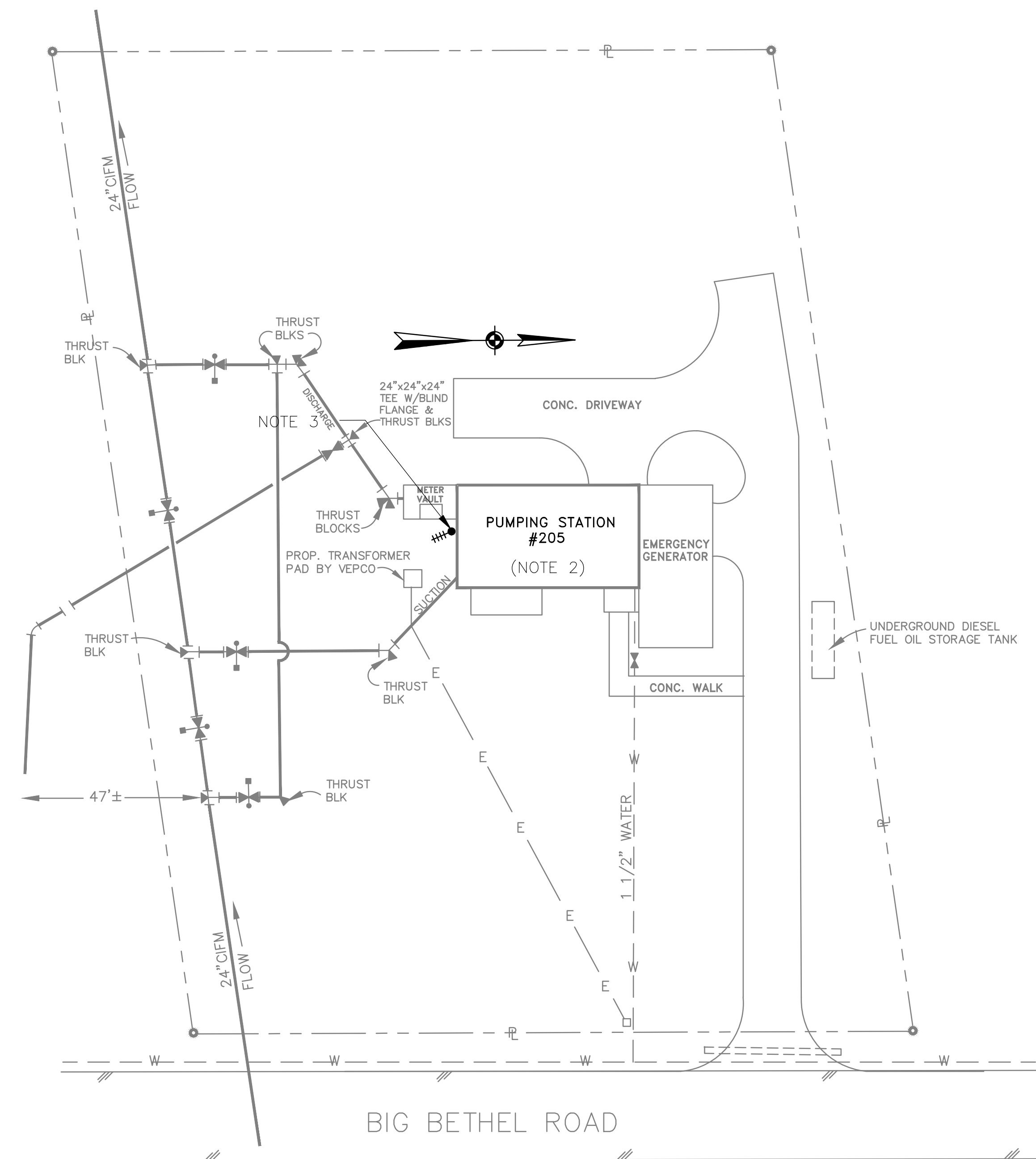


GENERAL NOTES:

- EXISTING YAGI ANTENNA AND CABLE TO BE REMOVED AFTER SUCCESSFUL INSTALLATION OF THE NEW RTU, RADIO AND ANTENNA CABLE.
- REFER TO DWG EN-02 FOR BUILDING PLAN SHOWING LOCATION OF EXISTING CONTROL PANEL AND ASSOCIATED WORK.
- MOVE EXISTING ANTENNA DOWN ON MAST TO ROOF LEVEL AND INSTALL NEW ANTENNA ON TOP OF MAST. INSTALL NEW ANTENNA CABLE.



1 SITE PLAN
SCALE: 1" = 20'

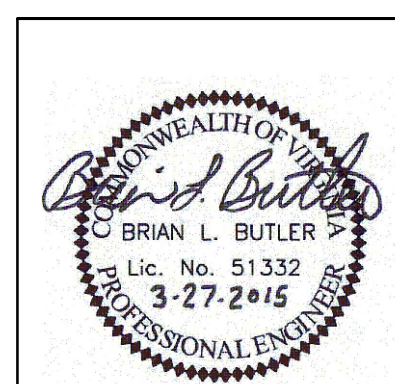


2 ANTENNA LOCATION
SCALE: NOT TO SCALE



ISSUE	DATE	DESCRIPTION
1	MAR 27 2015	CONFORMED DRAWINGS
0	DEC 2014	BID

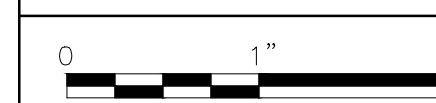
PROJECT MANAGER:	D. FOOTE
DESIGNED BY:	B. BUTLER
DRAWN BY:	G. BUI
PROJECT NUMBER:	8582



**HAMPTON ROADS SANITATION DISTRICT
VIRGINIA BEACH, VIRGINIA**

**INTERCEPTOR SYSTEMS PUMP STATION
CONTROL AND SCADA**

**BIG BETHEL
PRESSURE REDUCING STATION
NO 205
SITE PLAN**



FILENAME	04205EN01.DWG
SCALE	AS NOTED

DRAWING NUMBER	EN-01
----------------	-------

SHEET	40	OF	256
-------	----	----	-----