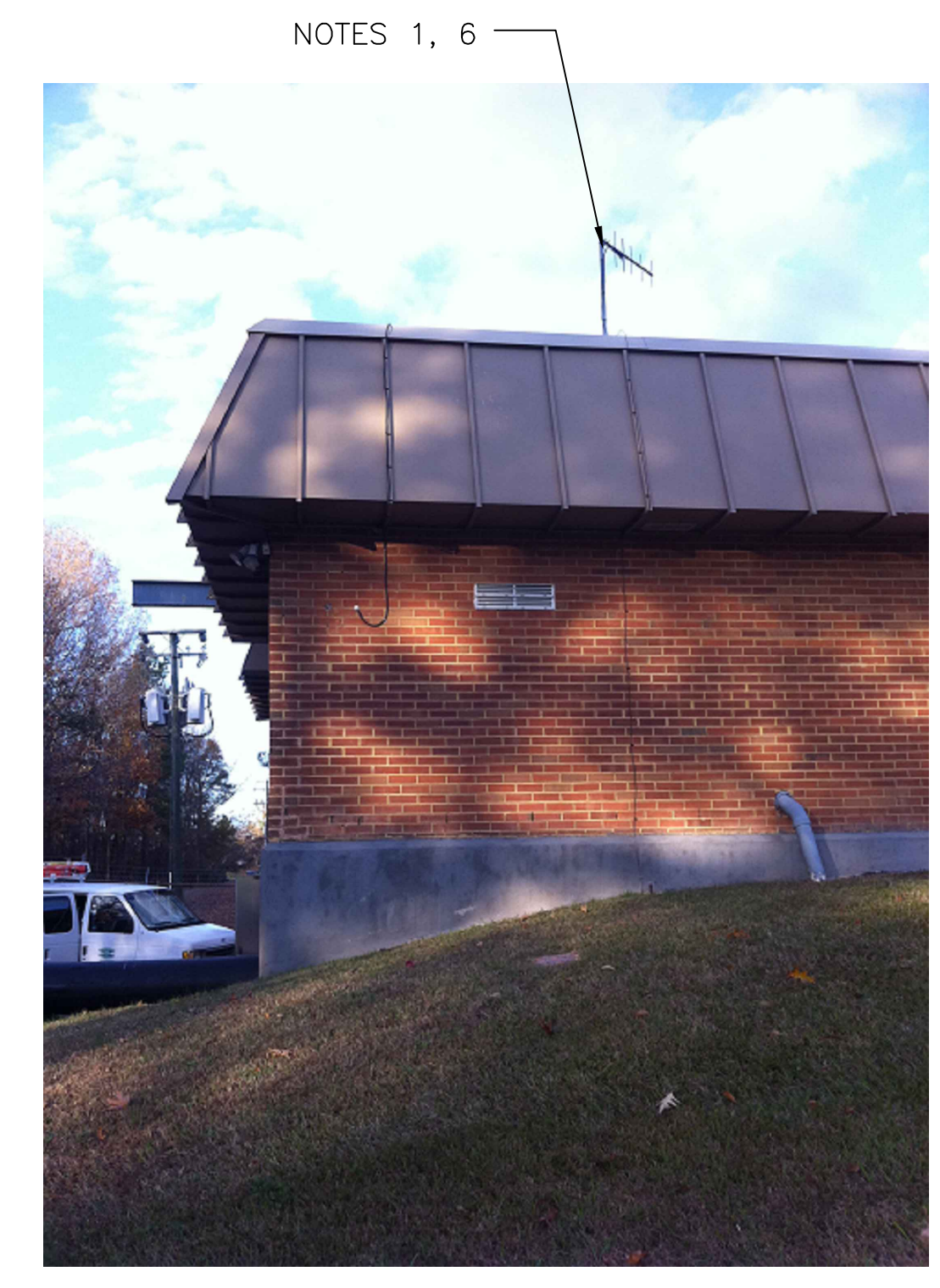


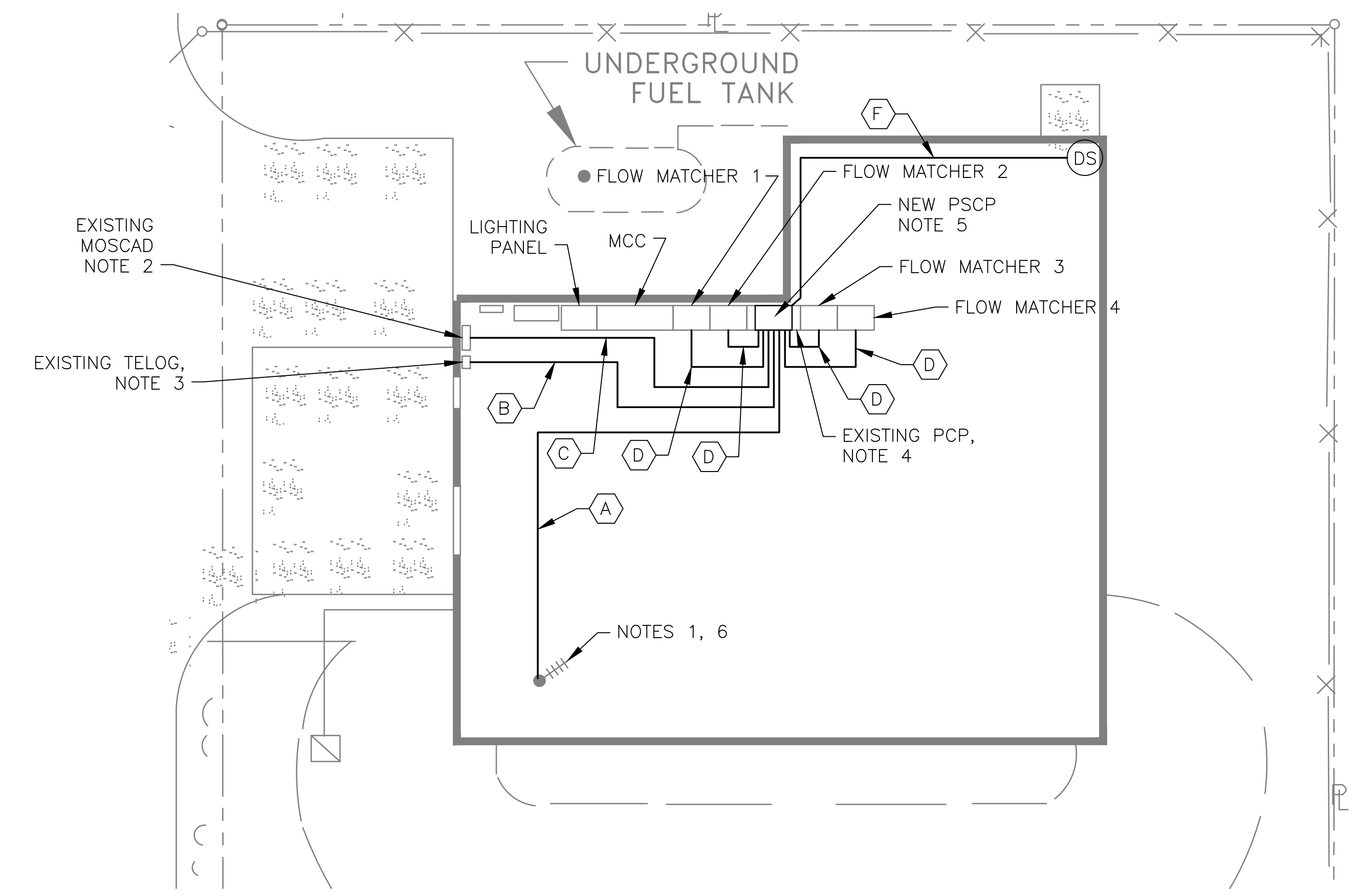
5 SITE PLAN
SCALE: 1" = 20'-0"



2 EXISTING ANTENNA LOCATION
SCALE: NOT TO SCALE

- NOTES:**
- EXISTING YAGI ANTENNA AND CABLE TO BE REMOVED AFTER SUCCESSFUL INSTALLATION OF THE NEW PUMP STATION CONTROL PANEL (PSCP).
 - EXISTING MOSCAD UNIT AND RADIO TO BE REMOVED FROM EXISTING PANEL.
 - EXISTING TELOG PANEL TO REMAIN. REMOVE EXISTING ANALOG AND DIGITAL INPUTS BETWEEN MOSCAD UNIT AND TELOG UNIT. REPLACE THESE SIGNALS WITH IDENTICAL SIGNALS ORIGINATING FROM THE NEW PSCP.
 - THE EXISTING PUMP CONTROL PANEL SHALL BE REUSED WITH A NEW SUB-PANEL INSTALLED OR REPLACED WITH A NEW PSCP DUE TO SPACE LIMITATIONS. REWIRE CONTROLS TO THE NEW PSCP OR SUB-PANEL AS SHOWN ON THE DRAWINGS.
 - REFER TO DRAWING G-13 FOR DETAILS OF THE CONSTRUCTION PHASING REQUIREMENTS FOR THE NEW PSCP.
 - MOVE EXISTING ANTENNA DOWN ON MAST AND INSTALL NEW ANTENNA ON TOP OF MAST. INSTALL NEW ANTENNA CABLE.
 - PROVIDE NEW TERMINAL BLOCKS IN EXISTING PANEL AND EXTEND EXISTING CONTROL WIRING TO NEW PSCP.
 - REFER TO DRAWING G-14 FOR PANEL LAYOUT..

CONDUIT/CABLE SCHEDULE	
A	ANTENNA CABLE
B	2 #12, 1 #12 GND IN 3/4" C 16 #14 IN 3/4" C 12 STP IN 1-1/2" C
C	44 #14 IN 1-1/2" C 13 STP IN 1-1/2" C
D	16 #14 IN 3/4" C 3 STP IN 3/4" C
E	NOT USED
F	2 #12 IN 3/4" C



1 ROOM PLAN
SCALE: 1/8" = 1'-0"



3 EXISTING MOSCAD PANEL
SCALE: NOT TO SCALE

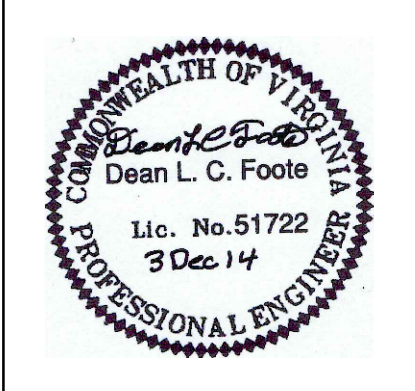


4 EXISTING CONTROL PANEL
SCALE: NOT TO SCALE



ISSUE	DATE	DESCRIPTION
1	MAR 2015	CONFORMED DWG REVISED PER ADDENDUM 3
0	DEC 2014	BID

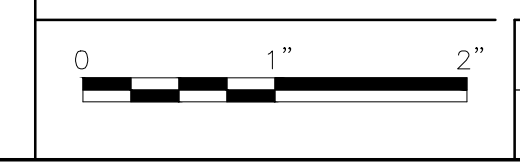
PROJECT MANAGER:	D. FOOTE
DESIGNED BY:	B. BUTLER
DRAWN BY:	G. BUI
PROJECT NUMBER:	8582



HAMPTON ROADS SANITATION DISTRICT
VIRGINIA BEACH, VIRGINIA

INTERCEPTOR SYSTEMS PUMP STATION
CONTROL AND SCADA

INTERIM/SHIPPS CORNER
PRESSURE REDUCING STATION
NO 143
SITE PLAN



FILENAME	05143ES17.DWG
SCALE	AS NOTED

DRAWING NUMBER	ES-17
SHEET	105 OF 256