

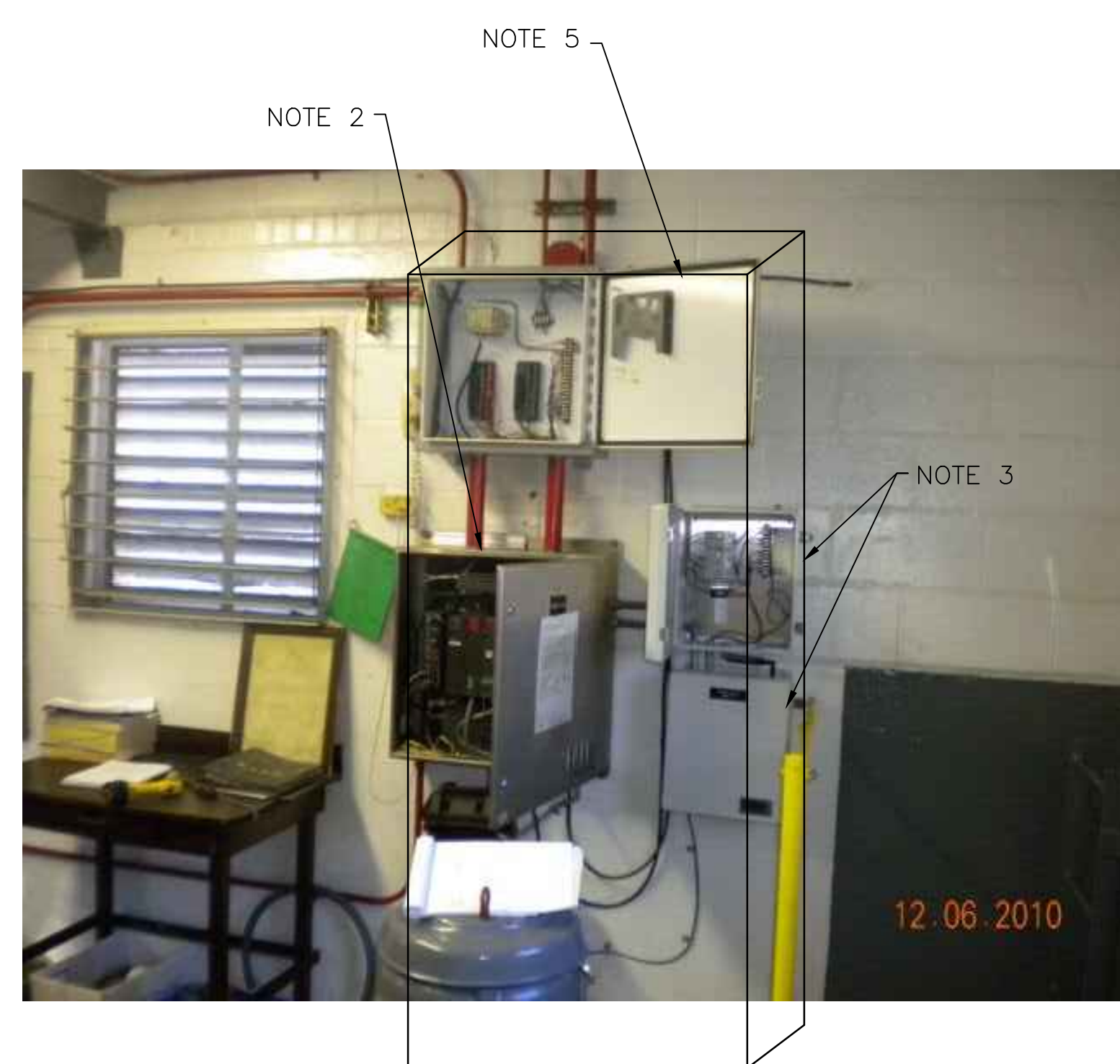
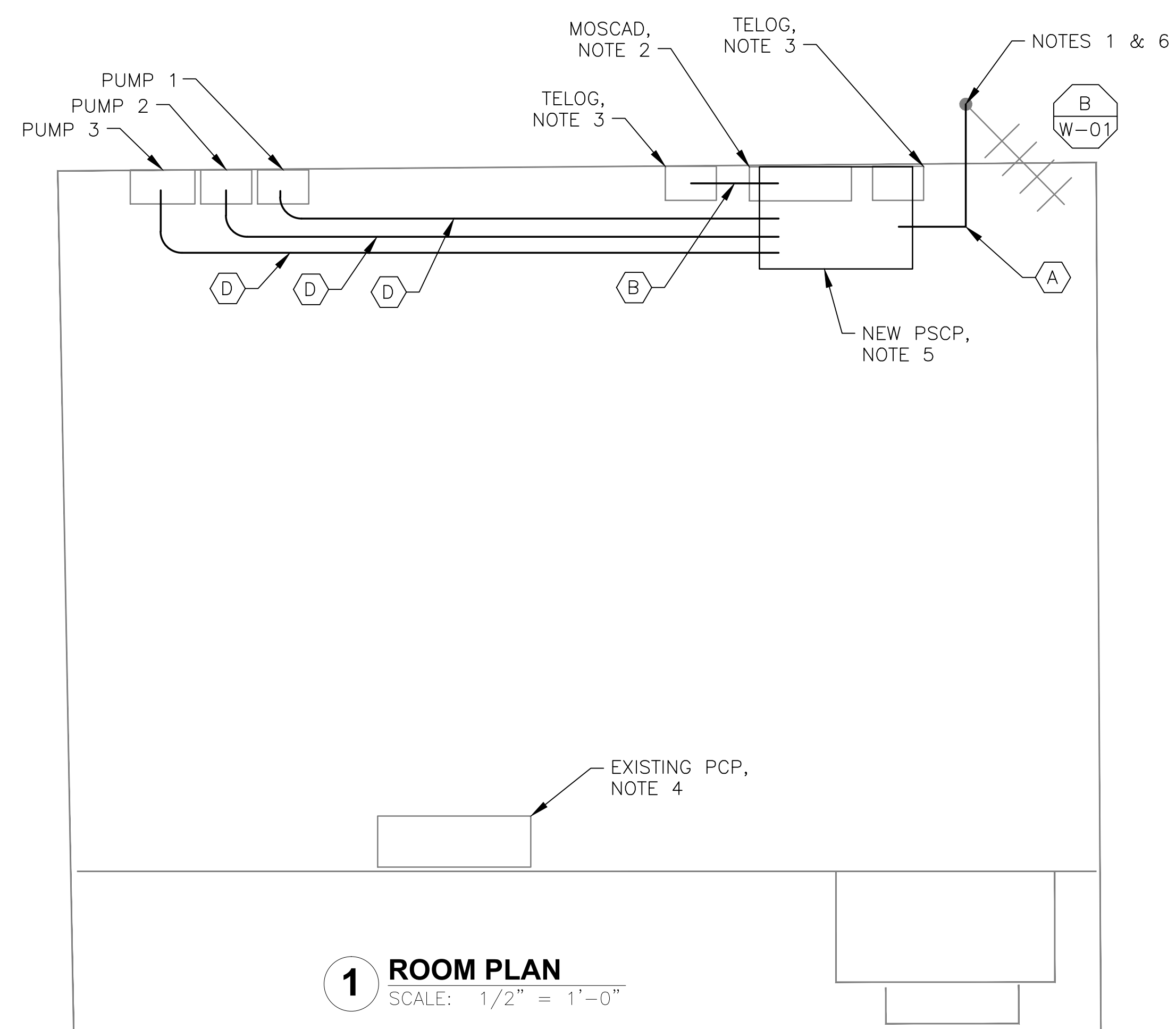
NOTES 1 & 6



- NOTES:**
- EXISTING YAGI ANTENNA AND CABLE TO BE REMOVED AFTER SUCCESSFUL INSTALLATION OF THE NEW PUMP STATION CONTROL PANEL (PSCP).
 - EXISTING MOSCAD AND TERMINATION PANEL TO BE TEMPORARILY RELOCATED; THEN REMOVED FROM SITE AFTER INSTALLATION AND TESTING OF THE NEW PSCP. REFER TO THE I/O LIST FOR EXISTING MOSCAD ANALOG AND DIGITAL I/O SIGNALS WHICH WILL BE RE-TERMINATED WITHIN THE NEW PSCP.
 - EXISTING TELOG PANEL TO BE RELOCATED AND MOUNTED ADJACENT TO THE NEW PSCP. EXACT LOCATION TO BE COORDINATED WITH HRSD. REMOVE EXISTING ANALOG AND DIGITAL INPUTS BETWEEN MOSCAD UNIT AND TELOG UNIT. REPLACE THESE SIGNALS WITH IDENTICAL SIGNALS ORIGINATING FROM THE NEW PSCP.
 - EXISTING PUMP CONTROL PANEL TO REMAIN. REMOVE EXISTING PLC'S, RELAYS, AND CONTROL EQUIPMENT AFTER INSTALLATION AND TESTING OF THE NEW PSCP.
 - REFER TO DRAWING G-13 FOR DETAILS OF THE CONSTRUCTION PHASING REQUIREMENTS FOR THE NEW PSCP.
 - MOVE EXISTING ANTENNA DOWN ON MAST AND INSTALL NEW ANTENNA ON TOP OF MAST. INSTALL NEW ANTENNA CABLE.
 - REFER TO DRAWING G-14 FOR PANEL LAYOUT.

2 EXISTING ANTENNA LOCATION
SCALE: NOT TO SCALE

4 SITE PLAN
SCALE: 1" = 20'-0"



3 MOSCAD PANEL LOCATION
SCALE: NOT TO SCALE

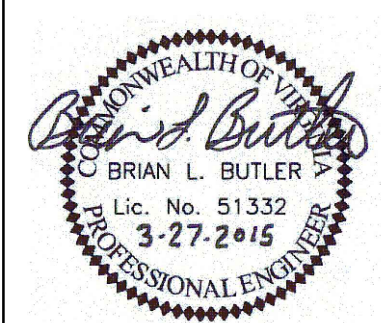
1 ROOM PLAN
SCALE: 1/2" = 1'-0"

CONDUIT/CABLE SCHEDULE	
A	ANTENNA CABLE
B	2 #12, 1 #12 GND IN 3/4" C 12 #14 IN 3/4" C 3 STP IN 3/4" C
C	NOT USED
D	16 #14 IN 3/4" C
E	NOT USED



ISSUE	DATE	DESCRIPTION
1	MAR 27 2015	CONFORMED DRAWINGS
0	DEC 2014	BID

PROJECT MANAGER:	D. FOOTE
DESIGNED BY:	B. BUTLER
DRAWN BY:	G. BUI
PROJECT NUMBER:	8582



HAMPTON ROADS SANITATION DISTRICT
VIRGINIA BEACH, VIRGINIA

INTERCEPTOR SYSTEMS PUMP STATION
CONTROL AND SCADA



FILENAME	05110ES43.DWG
SCALE	AS NOTED

DRAWING NUMBER	ES-43
SHEET	127 OF 256