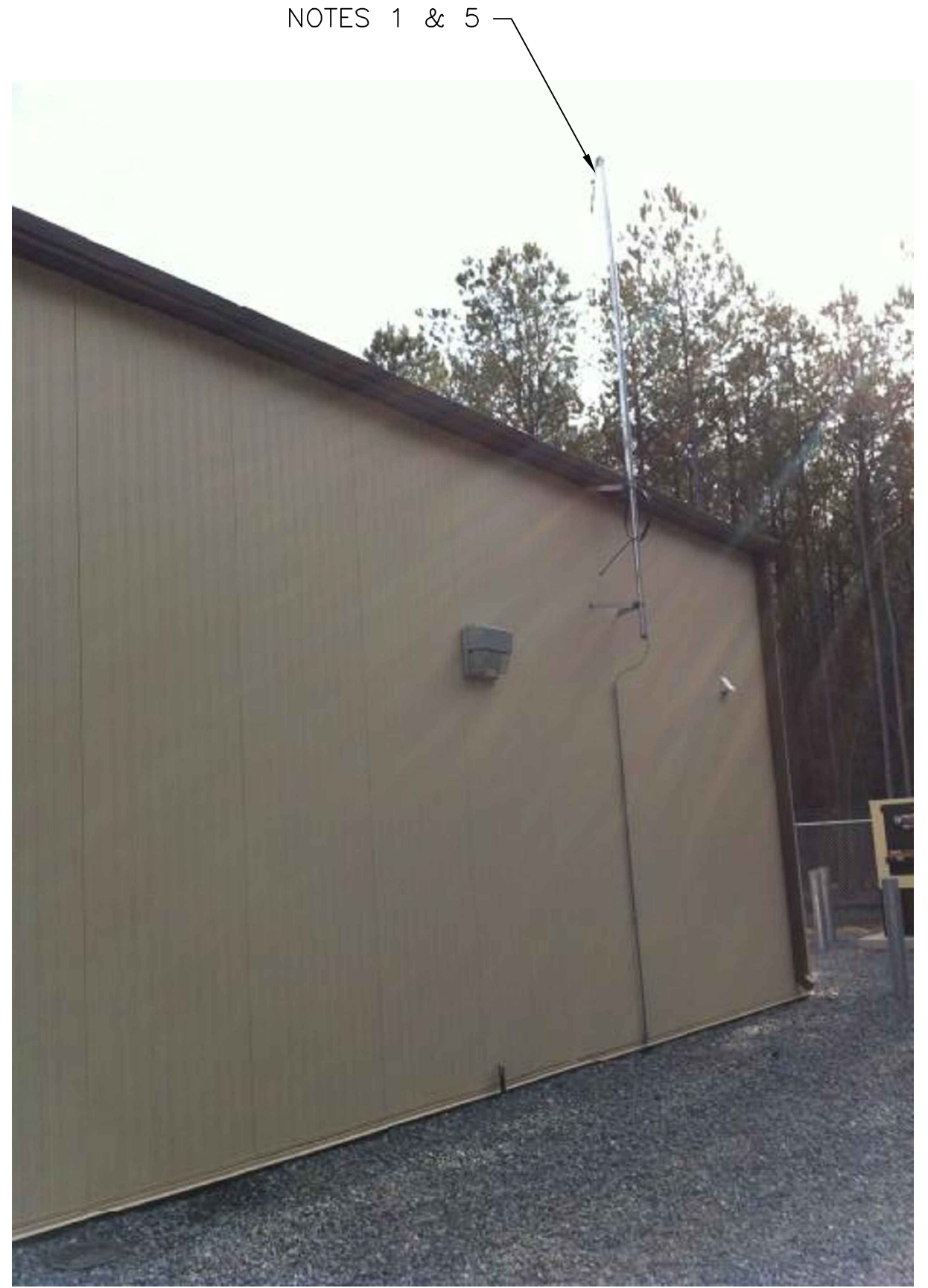
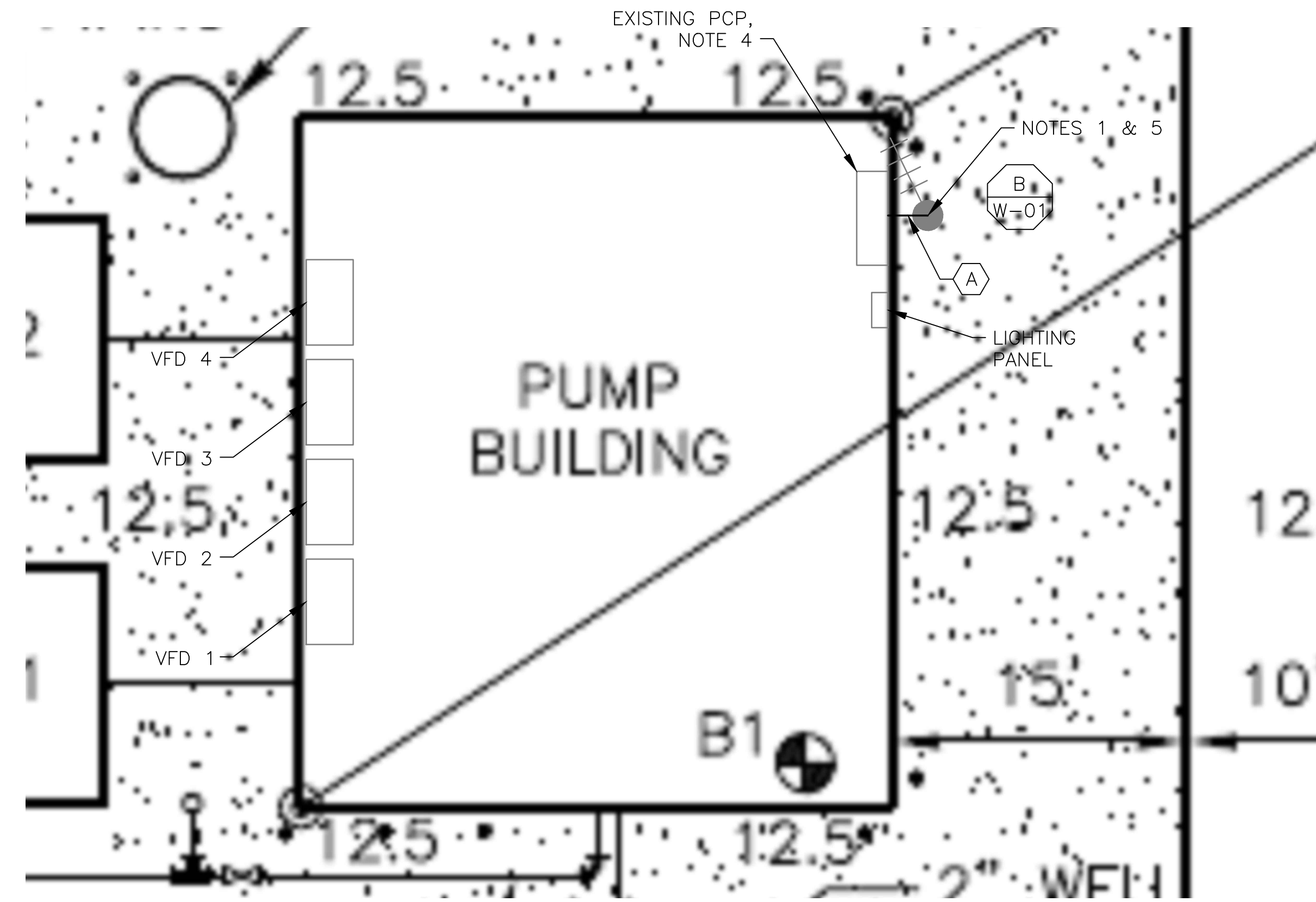


**4 SITE PLAN**  
SCALE: 1" = 20'-0"

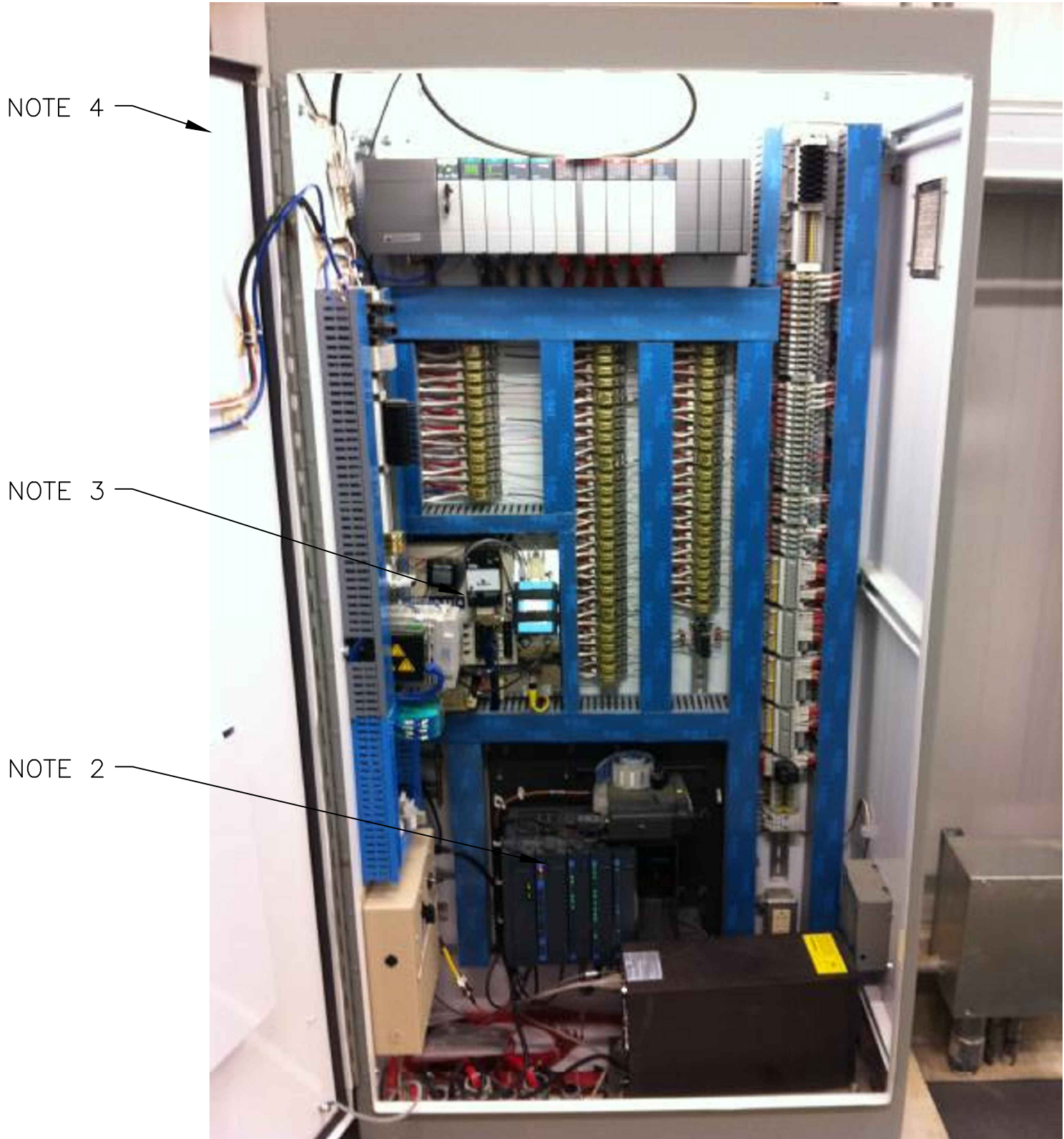


**2 ANTENNA LOCATION**  
SCALE: NOT TO SCALE

- NOTES:**
- EXISTING YAGI ANTENNA AND CABLE TO BE REMOVED AFTER SUCCESSFUL INSTALLATION OF THE NEW RTU, RADIO AND ANTENNA.
  - EXISTING MOSCAD PANEL MOUNTED INSIDE EXISTING CONTROL PANEL TO BE REMOVED.
  - EXISTING TELOG PANEL TO REMAIN. REMOVE EXISTING ANALOG AND DIGITAL INPUTS BETWEEN MOSCAD UNIT AND TELOG UNIT. REPLACE THESE SIGNALS WITH IDENTICAL SIGNALS ORIGINATING FROM THE NEW RTU IF NOT ALREADY IN PLACE WITH THE PLC.
  - EXISTING PUMP CONTROL PANEL TO REMAIN. REMOVE EXISTING PLC AND REPLACE WITH A NEW RTU.
  - MOVE EXISTING ANTENNA DOWN ON MAST AND INSTALL NEW ANTENNA ON TOP OF MAST. INSTALL NEW ANTENNA CABLE.
  - CONTRACTOR TO FIELD VERIFY THE EXACT LOCATION OF ALL PANELS.
  - INSTALL A NEW RADIO.
  - REFER TO DRAWING G-12 FOR DETAILS OF THE CONSTRUCTION PHASING REQUIREMENTS.



**1 ROOM PLAN**  
SCALE: 3/16" = 1'-0"



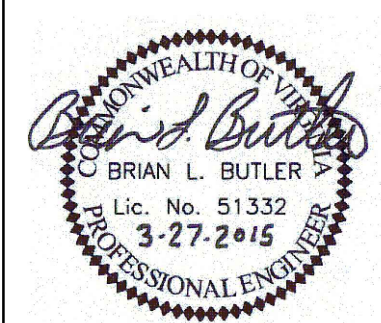
**3 EXISTING CONTROL PANEL**  
SCALE: NOT TO SCALE

CONDUIT/CABLE SCHEDULE	
(A)	ANTENNA CABLE
(B)	NOT USED
(C)	NOT USED
(D)	NOT USED
(E)	NOT USED
(F)	NOT USED



ISSUE	DATE	DESCRIPTION
1	MAR 27 2015	CONFORMED DRAWINGS
0	DEC 2014	BID

PROJECT MANAGER:	D. FOOTE
DESIGNED BY:	B. BUTLER
DRAWN BY:	G. BUI
PROJECT NUMBER:	8582



**HAMPTON ROADS SANITATION DISTRICT**  
VIRGINIA BEACH, VIRGINIA

**INTERCEPTOR SYSTEMS PUMP STATION**  
CONTROL AND SCADA

**BUCKLEY HALL ROAD**  
**GRAVITY LIFT STATION**  
**NO 40**  
**SITE PLAN**

FILENAME: 0640EM39.DWG  
SCALE: AS NOTED  
DRAWING NUMBER: EM-39  
SHEET 185 OF 256