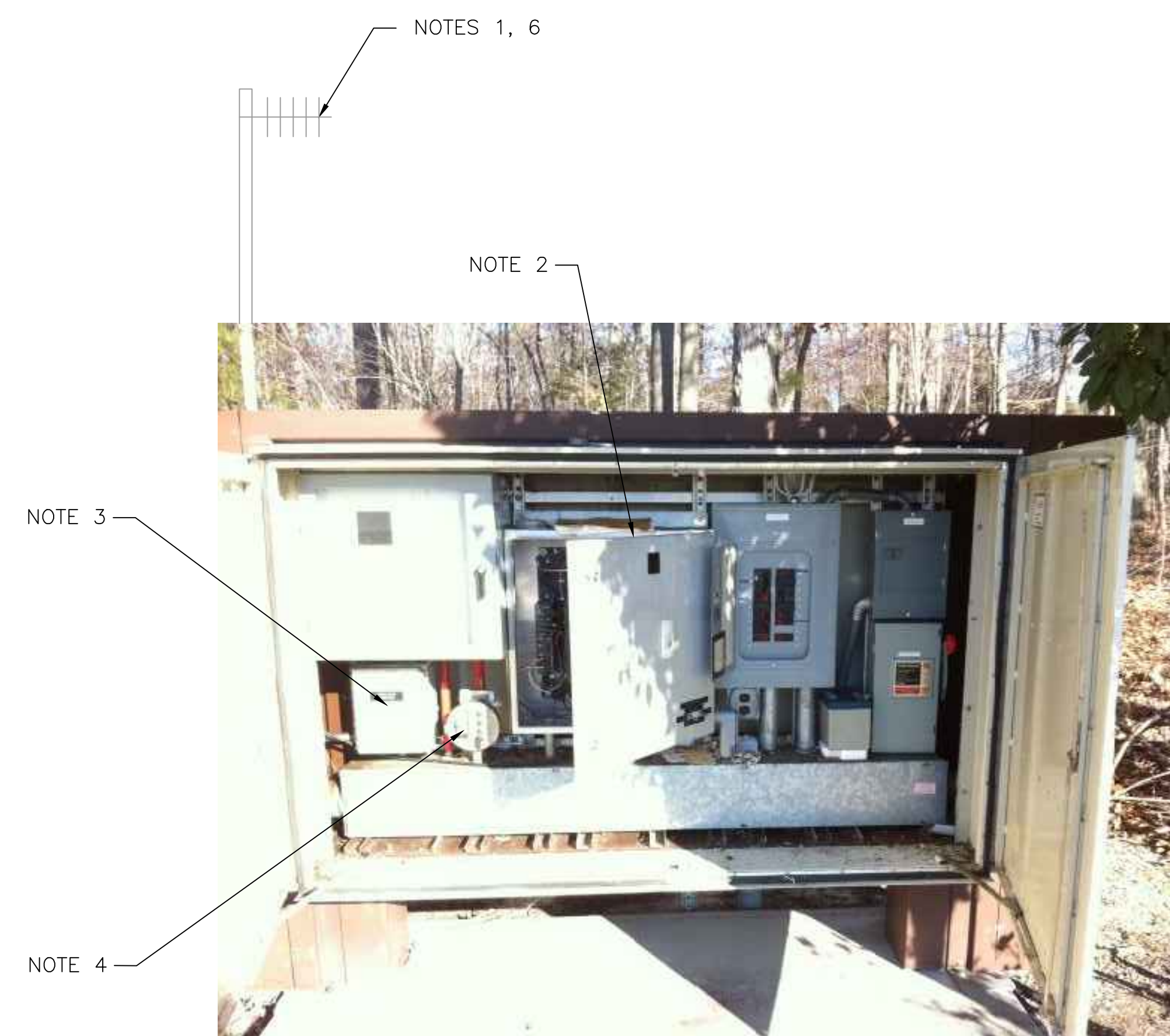
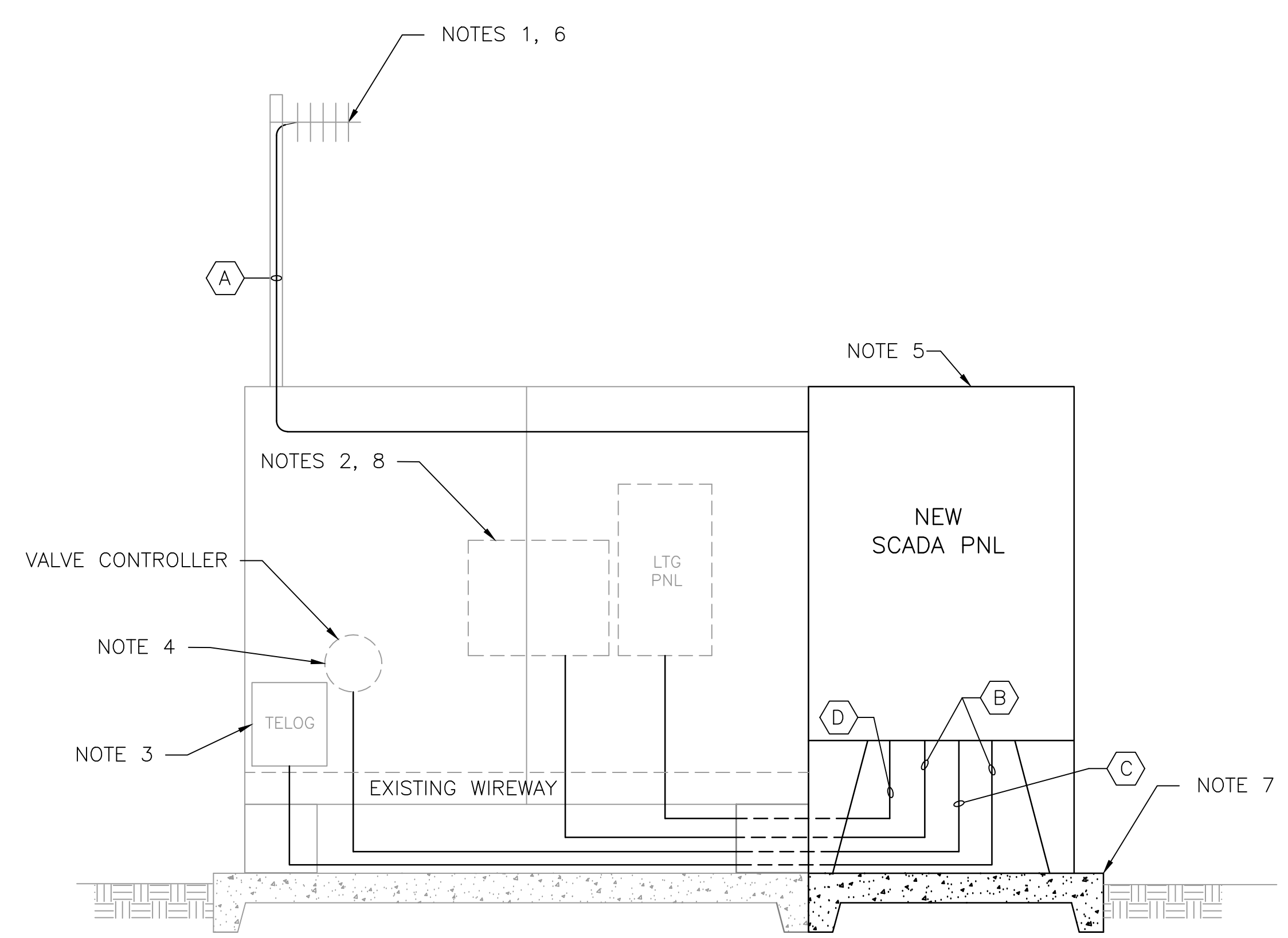


- GENERAL NOTES:**
- EXISTING YAGI ANTENNA AND CABLE TO BE REMOVED AFTER SUCCESSFUL INSTALLATION OF THE NEW PUMP STATION CONTROL PANEL (PSCP).
  - EXISTING MOSCAD UNIT AND RADIO TO BE REMOVED FROM EXISTING PANEL.
  - EXISTING TELOG PANEL TO REMAIN. REMOVE EXISTING ANALOG AND DIGITAL INPUTS BETWEEN MOSCAD UNIT AND TELOG UNIT. REPLACE THESE SIGNALS WITH IDENTICAL SIGNALS ORIGINATING FROM THE NEW PSCP.
  - EXISTING VALVE CONTROLLER TO REMAIN. REWIRE CONTROLS TO THE NEW PSCP AS SHOWN ON THE DRAWINGS.
  - REFER TO DRAWING G-11 FOR DETAILS OF THE CONSTRUCTION PHASING REQUIREMENTS FOR THE NEW PSCP.
  - MOVE EXISTING ANTENNA DOWN ON MAST AND INSTALL NEW ANTENNA AT TOP OF MAST. INSTALL NEW ANTENNA CABLE.
  - PROVIDE NEW CONCRETE PAD.
  - PROVIDE NEW TERMINAL BLOCKS IN THE EXISTING PANEL AND EXTEND EXISTING CONTROL WIRING TO THE NEW PSCP.
  - REFER TO DRAWING G-16 FOR PANEL LAYOUT.
  - SITE PLAN IS ON DRAWING EN-07.



**1 EXISTING PANEL**  
SCALE: NOT TO SCALE



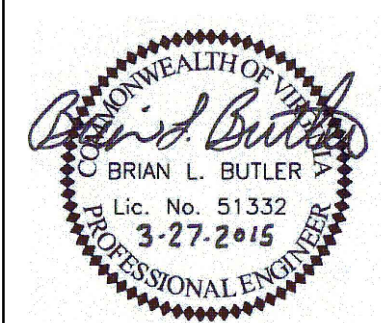
**2 NEW SCADA PANEL ELEVATION**  
SCALE: NOT TO SCALE

CONDUIT/CABLE SCHEDULE	
A	ANTENNA CABLE IN 1-1/2" C
B	8 #14 IN 3/4" C 3 STP IN 3/4" C
C	4 #14 IN 1" C 3 STP IN 3/4" C
D	2 #12, 1 #12 GND IN 3/4" C



ISSUE	DATE	DESCRIPTION
1	MAR 27 2015	CONFORMED DRAWINGS
0	DEC 2014	BID

PROJECT MANAGER:	D. FOOTE
DESIGNED BY:	B. BUTLER
DRAWN BY:	G. BUI
PROJECT NUMBER:	8582



**HAMPTON ROADS SANITATION DISTRICT**  
VIRGINIA BEACH, VIRGINIA

**INTERCEPTOR SYSTEMS PUMP STATION**  
CONTROL AND SCADA

**ROUTE 199**  
**PRESSURE CONTROL VALVE**  
**NO 234**  
**PANEL ELEVATION**

0 1" 2"

FILENAME	O4234EN08.DWG	DRAWING NUMBER	EN-08
SCALE	AS NOTED	SHEET	53 OF 256