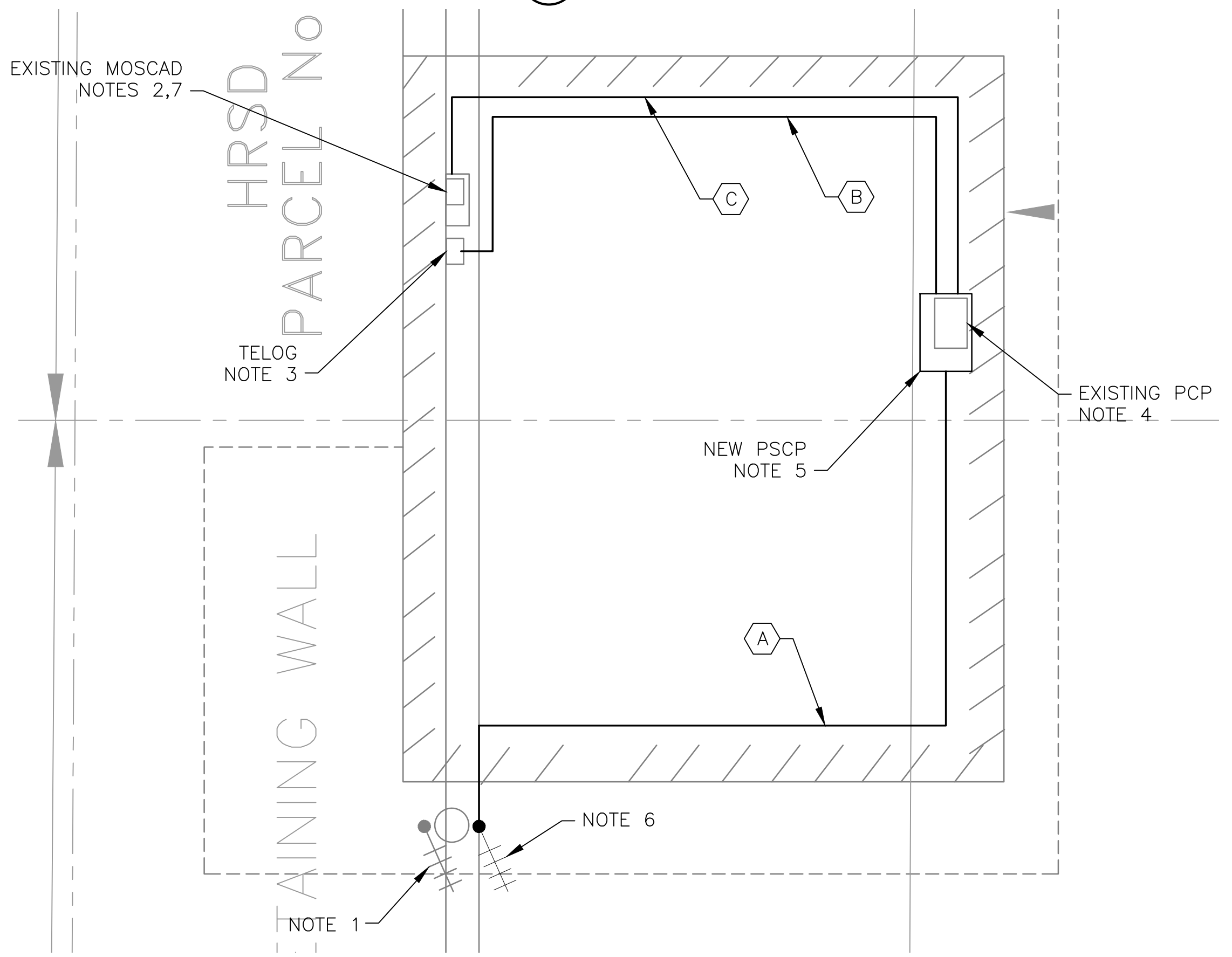
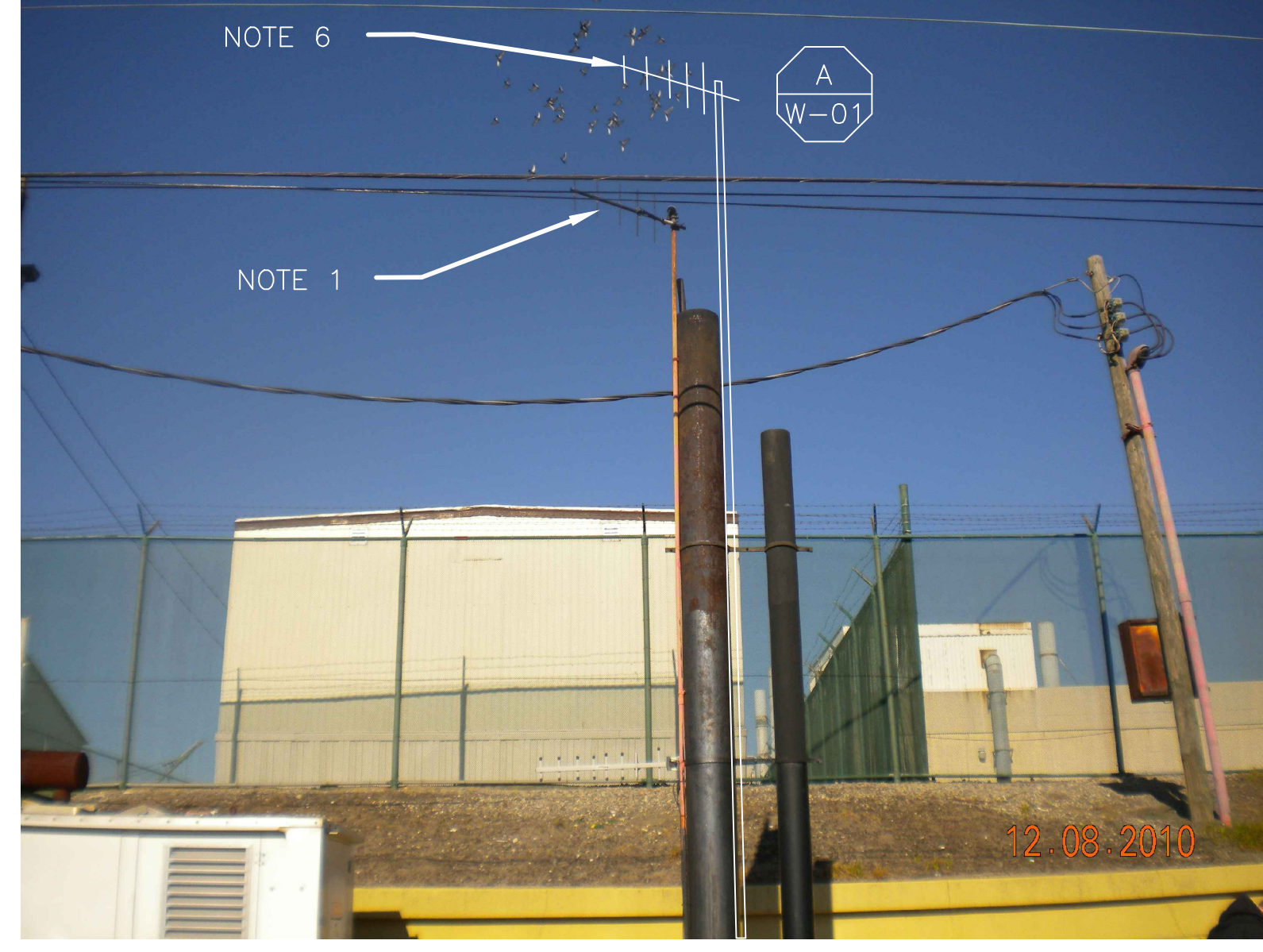


**5 SITE PLAN**  
SCALE: 1" = 10'-0"



**1 ROOM PLAN**  
SCALE: 1/4" = 1'-0"



**2 EXISTING ANTENNA LOCATION**  
SCALE: NOT TO SCALE



**4 EXISTING CONTROL PANEL**  
SCALE: NOT TO SCALE



**3 EXISTING MOSCAD PANEL**  
SCALE: NOT TO SCALE

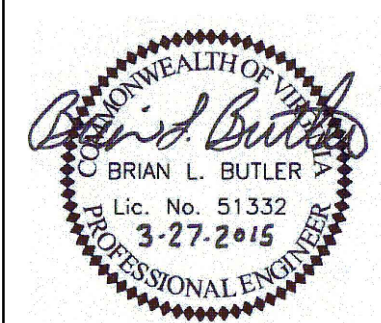
- NOTES:**
- EXISTING YAGI ANTENNA, MAST AND CABLE TO BE REMOVED AFTER SUCCESSFUL INSTALLATION OF THE NEW PUMP STATION CONTROL PANEL (PSCP).
  - EXISTING MOSCAD UNIT AND RADIO TO BE REMOVED FROM EXISTING PANEL.
  - EXISTING TELOG PANEL TO REMAIN. REMOVE EXISTING ANALOG AND DIGITAL INPUTS BETWEEN MOSCAD UNIT AND TELOG UNIT. REPLACE THESE SIGNALS WITH IDENTICAL SIGNALS ORIGINATING FROM THE NEW PSCP.
  - REMOVE EXISTING PUMP CONTROL PANEL AFTER INSTALLATION OF THE TEMPORARY CONTROL PANEL. REWIRE CONTROLS TO THE NEW PSCP AS SHOWN ON THE DRAWINGS.
  - REFER TO DRAWING G-12 FOR DETAILS OF THE CONSTRUCTION PHASING REQUIREMENTS FOR THE NEW PSCP.
  - PROVIDE NEW MAST, ANTENNA CABLE AND ANTENNA ON THE EXISTING POLE ON THE OPPOSITE SIDE OF THE EXISTING MAST.
  - PROVIDE NEW TERMINAL BLOCKS IN EXISTING PANEL AND EXTEND EXISTING CONTROL WIRING TO NEW PSCP.
  - REFER TO DRAWING G-14 FOR PANEL LAYOUT.

CONDUIT/CABLE SCHEDULE	
(A)	ANTENNA CABLE
(B)	2 #12, 1 #12 GND IN 3/4" C 6 #14 IN 3/4" C 5 STP IN 1" C
(C)	40 #14 IN 1-1/2" C 6 STP IN 1" C



ISSUE	DATE	DESCRIPTION
1	MAR 27 2015	CONFORMED DRAWINGS
0	DEC 2014	BID

PROJECT MANAGER:	D. FOOTE
DESIGNED BY:	B. BUTLER
DRAWN BY:	G. BUI
PROJECT NUMBER:	8582



**HAMPTON ROADS SANITATION DISTRICT**  
VIRGINIA BEACH, VIRGINIA

**INTERCEPTOR SYSTEMS PUMP STATION**  
CONTROL AND SCADA



FILENAME	0420ZEN16.DWG
SCALE	AS NOTED

DRAWING NUMBER	EN-16
SHEET	60 OF 256