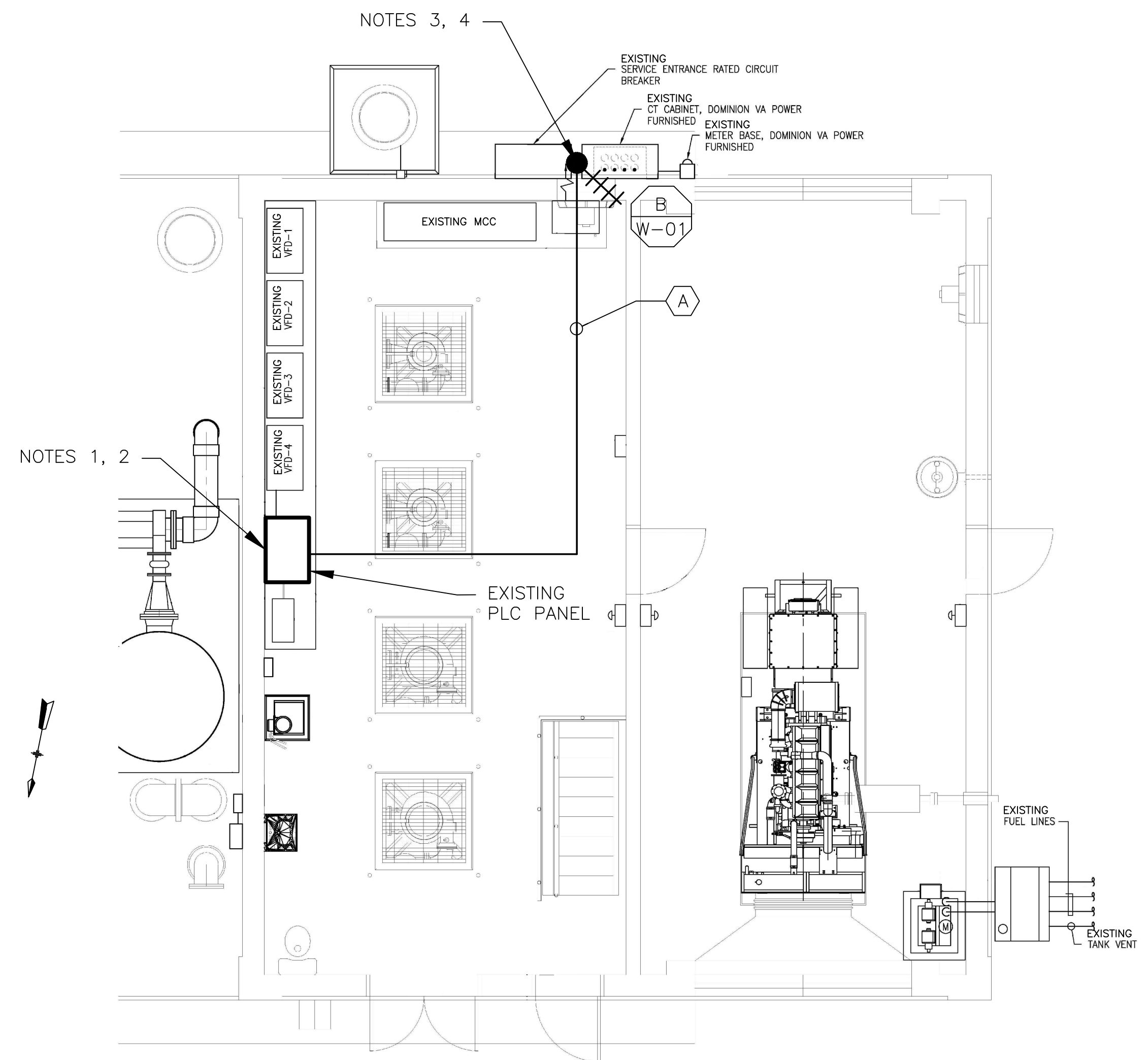


**2 SITE PLAN**  
SCALE: 1" = 20'-0"



**1 FLOOR PLAN**  
SCALE: 1/4" = 1'-0"

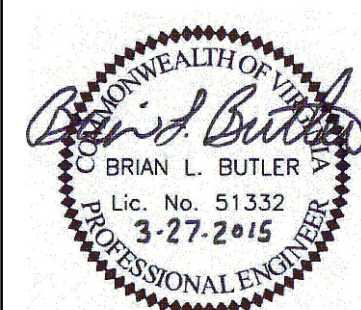
- NOTES:**
- CONTROL PANEL HAS BEEN RECENTLY UPGRADED. REMOVE EXISTING PLC/OIT AND INSTALL NEW RTU/OIT AND RADIO IN THE EXISTING CONTROL PANEL.
  - REMOVE EXISTING MOSCAD RTU PANEL AND APPURTENANCES.
  - PROVIDE A NEW ANTENNA AND ANTENNA CABLE. MOVE EXISTING ANTENNA DOWN ON MAST TO ROOF LEVEL AND INSTALL NEW ANTENNA ON TOP OF MAST.
  - EXISTING YAGI ANTENNA AND CABLE TO BE REMOVED AFTER SUCCESSFUL INSTALLATION OF THE NEW RTU, RADIO, ANTENNA AND ANTENNA CABLE.

CONDUIT/CABLE SCHEDULE	
A	ANTENNA CABLE
B	NOT USED
C	NOT USED
D	NOT USED
E	NOT USED



ISSUE	DATE	DESCRIPTION
1	MAR 27 2015	CONFORMED DRAWINGS
0	DEC 2014	BID

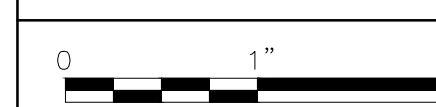
PROJECT MANAGER:	D. FOOTE
DESIGNED BY:	B. BUTLER
DRAWN BY:	G. BUI
PROJECT NUMBER:	8582



**HAMPTON ROADS SANITATION DISTRICT  
VIRGINIA BEACH, VIRGINIA**

**INTERCEPTOR SYSTEMS PUMP STATION  
CONTROL AND SCADA**

**TRITON COURT  
GRAVITY LIFT STATION  
SITE PLAN**



FILENAME	04119EN49.DWG
SCALE	AS NOTED

DRAWING NUMBER	EN-49
----------------	-------