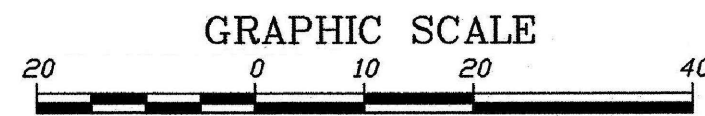


SEE  
DETAIL 1  
THIS SHEET

**NORTH AVE**



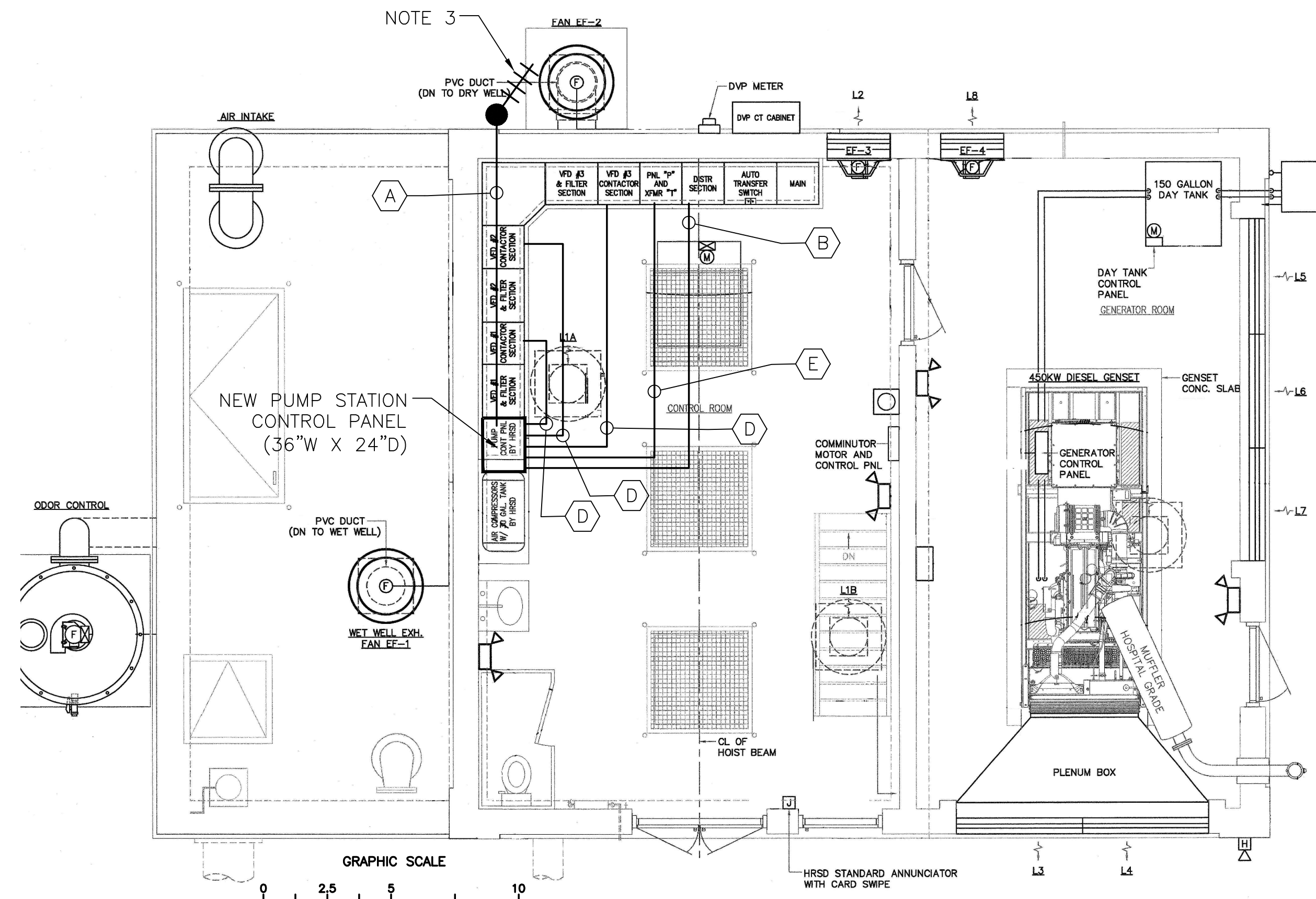
**2 SITE PLAN**  
SCALE: AS NOTED

**NOTES:**

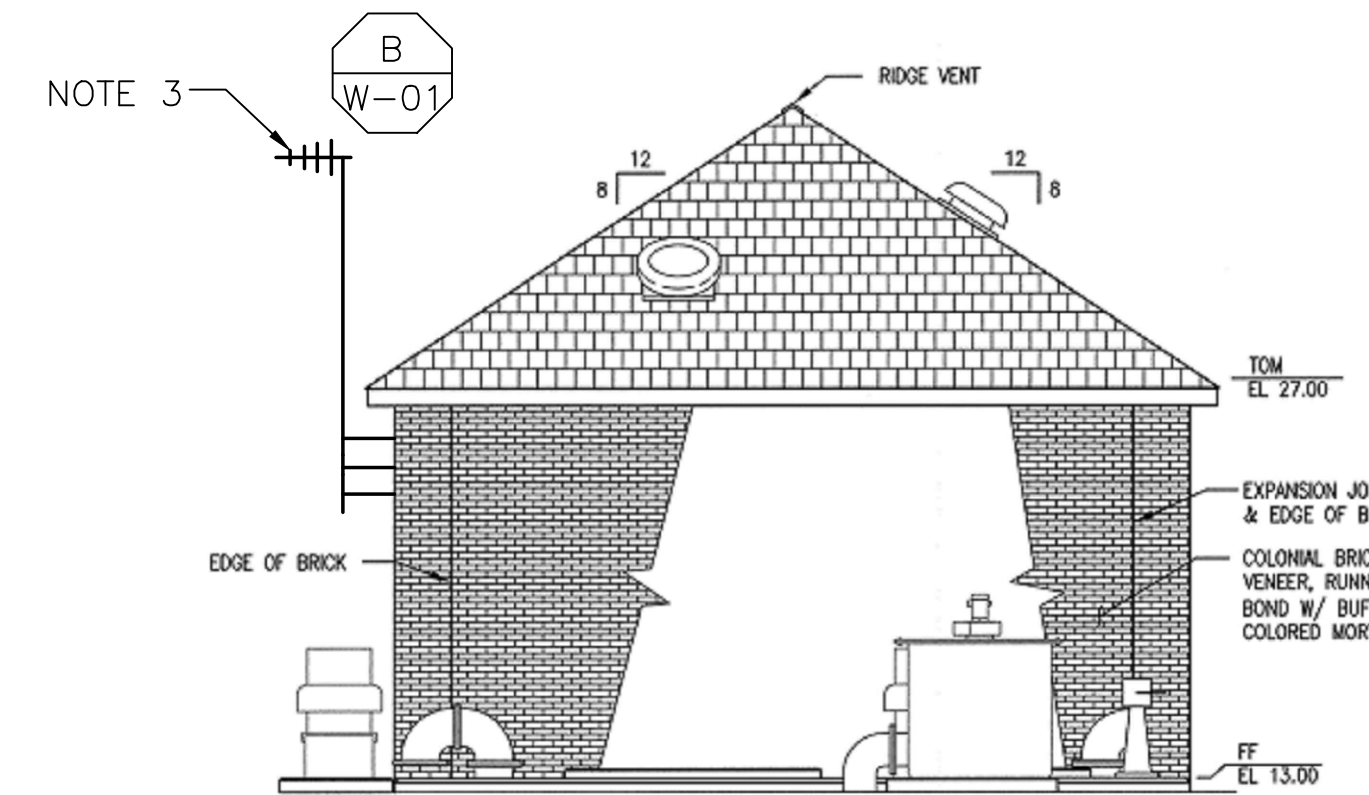
1. INSTALL THE NEW PUMP STATION CONTROL PANEL (PSCP) IN THE SPACE PROVIDED. PULL IN AND TERMINATE THE ANALOG, DISCRETE AND POWER CABLES FROM THE PRS CONTROL PANEL THROUGH THREE SEPARATE CONDUITS.
2. REFER TO DRAWING G-11 FOR DETAILS OF THE CONSTRUCTION PHASING REQUIREMENTS FOR THE NEW PSCP.
3. INSTALL NEW MAST, ANTENNA CABLE AND ANTENNA.
4. REFER TO DRAWING G-14 FOR PANEL LAYOUT.

**CONDUIT/CABLE SCHEDULE**

A	ANTENNA CABLE
B	22 #14 IN 3/4" C
	3 STP IN 3/4" C
C	NOT USED
D	10 #14 IN 3/4" C
	3 STP IN 3/4" C
E	2 #12, 1 #12 GND IN 3/4" C



**1 FLOOR PLAN**  
SCALE: AS NOTED

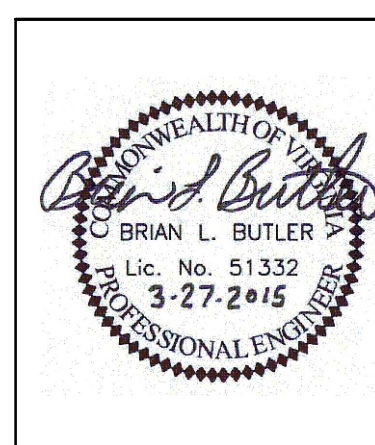


**3 ANTENNA LOCATION**  
SCALE: N.T.S.



ISSUE	DATE	DESCRIPTION
1	MAR 27 2015	CONFORMED DRAWINGS
0	DEC 2014	BID

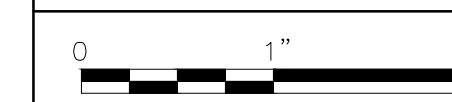
PROJECT MANAGER:	D. FOOTE
DESIGNED BY:	B. BUTLER
DRAWN BY:	G. BUI
PROJECT NUMBER:	8582



**HAMPTON ROADS SANITATION DISTRICT**  
**VIRGINIA BEACH, VIRGINIA**

**INTERCEPTOR SYSTEMS PUMP STATION**  
**CONTROL AND SCADA**

**NORTH AVENUE**  
**GRAVITY LIFT STATION**  
**NO 207**  
**SITE PLAN**



FILENAME	04207EN20.DWG
SCALE	AS NOTED

DRAWING NUMBER	EN-20
----------------	-------