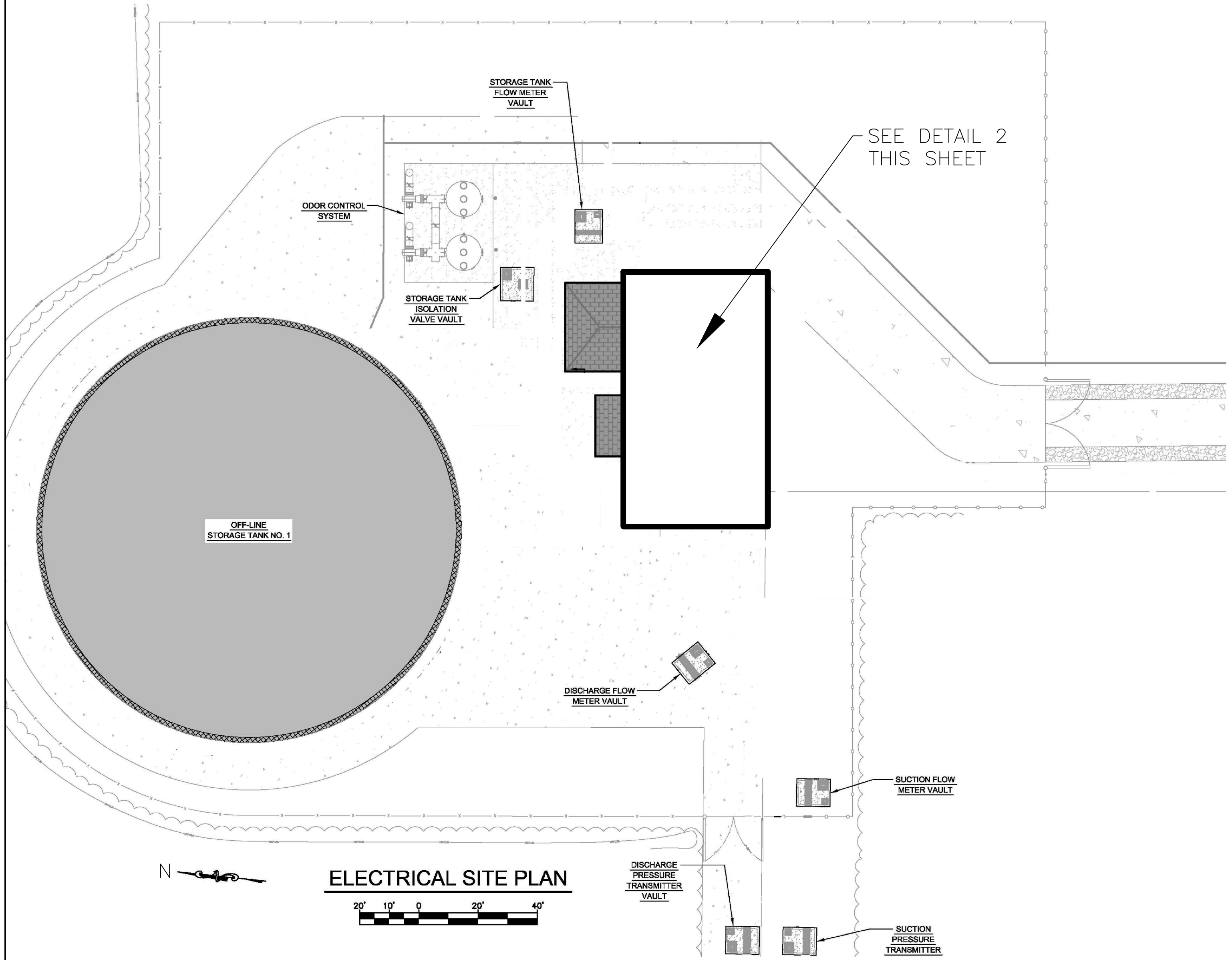
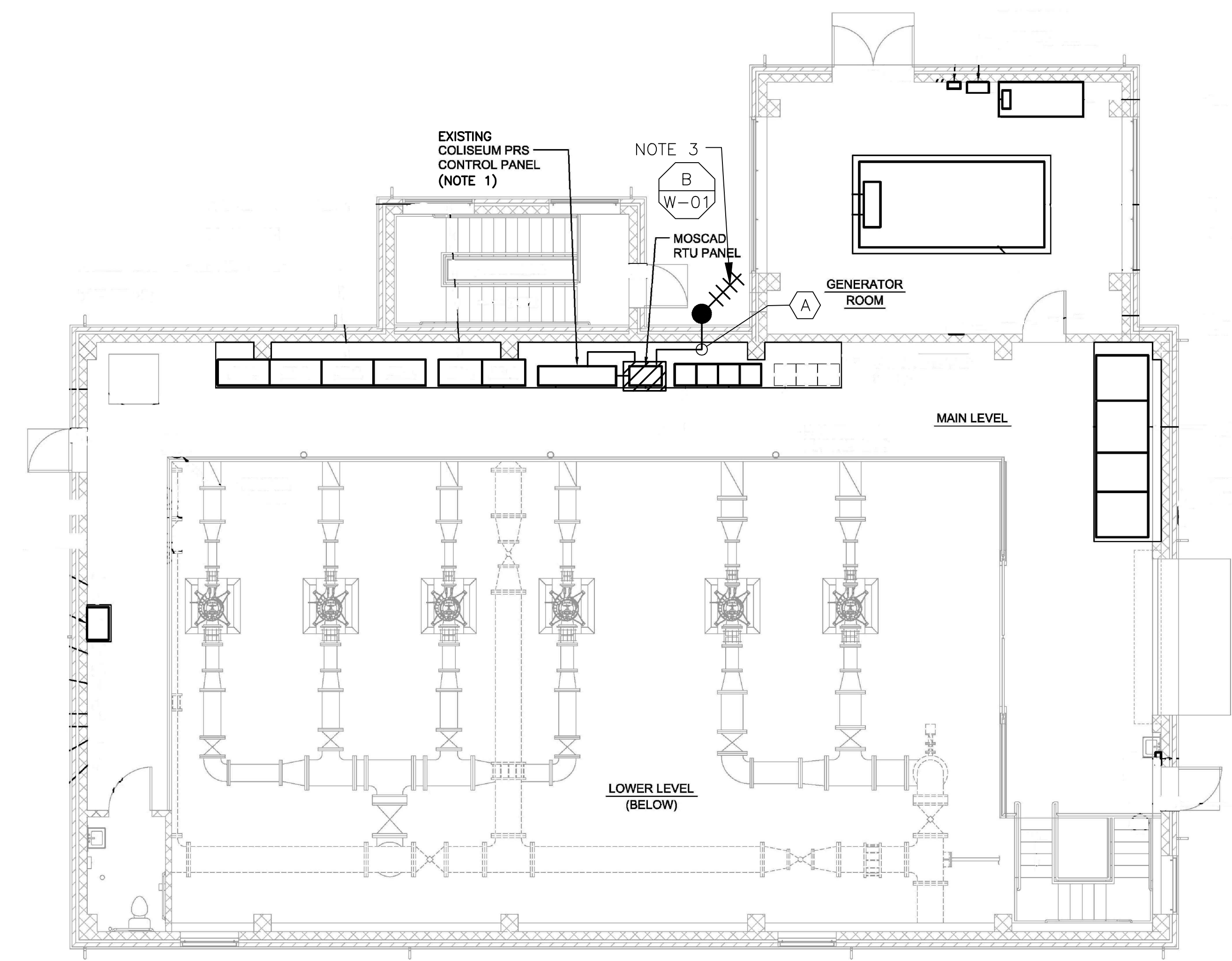


- NOTES:**
- CONTROL PANEL HAS BEEN RECENTLY UPGRADED. REMOVE EXISTING PLC, OIT AND INSTALL NEW RTU, OIT AND RADIO IN THE EXISTING CONTROL PANEL.
 - REMOVE EXISTING MOSCAD RTU AND APPURTENANCES. THE PANEL CAN BE USED FOR NEW RADIO, IF REQUIRED.
 - PROVIDE A NEW ANTENNA AND ANTENNA CABLE. EXISTING RADIO, YAGI ANTENNA AND CABLE TO BE REMOVED AFTER SUCCESSFUL INSTALLATION OF THE NEW RTU, RADIO AND ANTENNA CABLE.



1 SITE PLAN
SCALE: AS NOTED



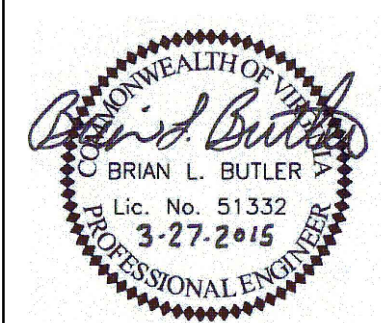
2 FLOOR PLAN
SCALE: AS NOTED

CONDUIT/CABLE SCHEDULE	
(A)	ANTENNA CABLE
(B)	NOT USED
(C)	NOT USED
(D)	NOT USED
(E)	NOT USED



ISSUE	DATE	DESCRIPTION
1	MAR 27 2015	CONFORMED DRAWINGS
0	DEC 2014	BID

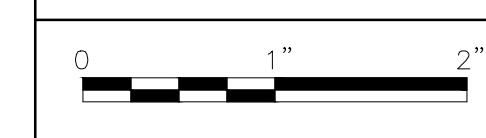
PROJECT MANAGER:	D. FOOTE
DESIGNED BY:	B. BUTLER
DRAWN BY:	G. BUI
PROJECT NUMBER:	8582



HAMPTON ROADS SANITATION DISTRICT
VIRGINIA BEACH, VIRGINIA

INTERCEPTOR SYSTEMS PUMP STATION
CONTROL AND SCADA

COLISEUM
PRESSURE REDUCING STATION
SITE PLAN



FILENAME	04205EN06.DWG
SCALE	AS NOTED

DRAWING NUMBER
EN-06