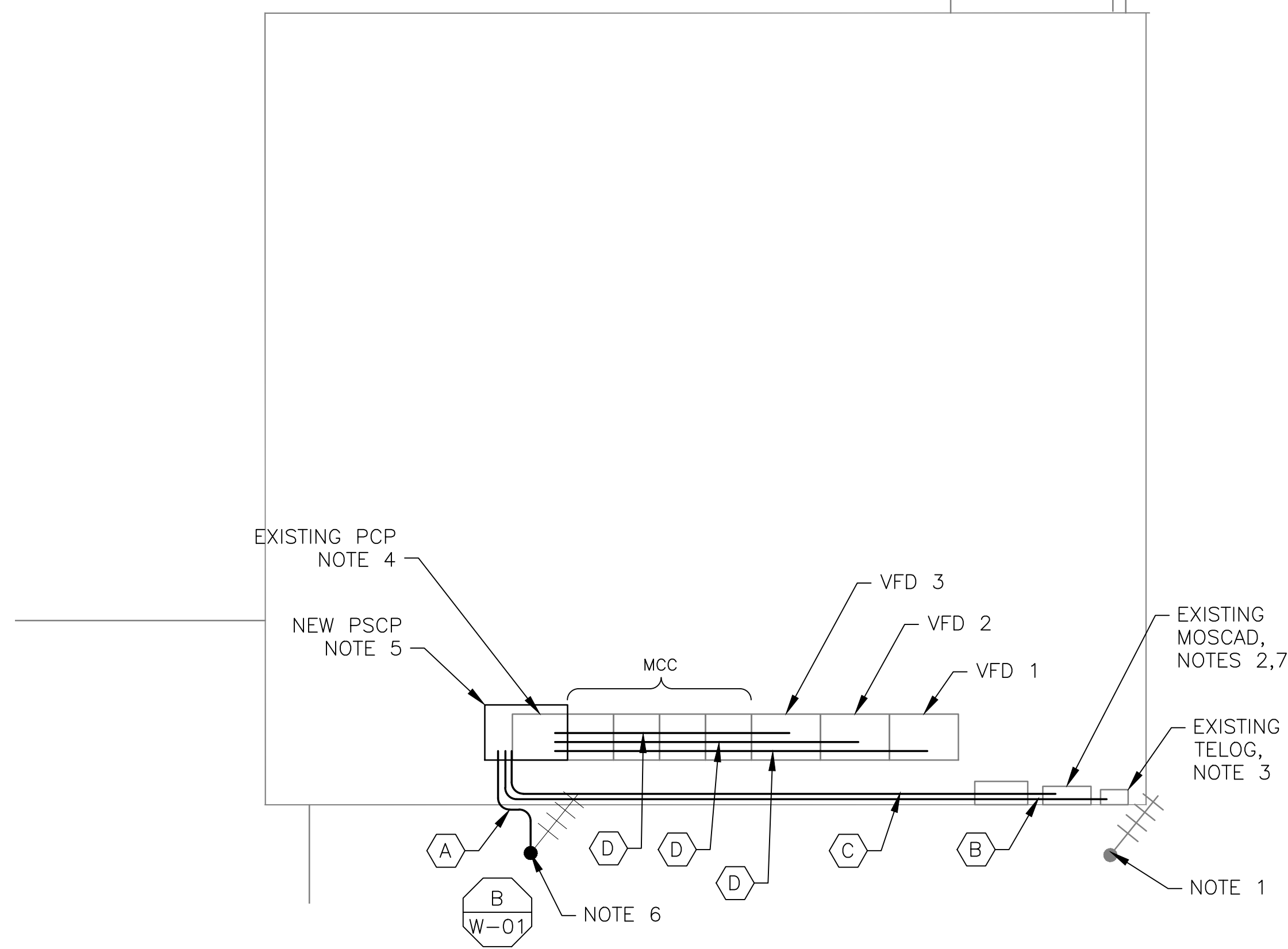


5 SITE PLAN
SCALE: 1" = 10'-0"



1 ROOM PLAN
SCALE: 1/4" = 1'-0"



2 EXISTING ANTENNA LOCATION
SCALE: NOT TO SCALE



3 EXISTING MOSCAD PANEL LOCATION
SCALE: NOT TO SCALE



4 CONTROL PANEL LOCATION
SCALE: NOT TO SCALE

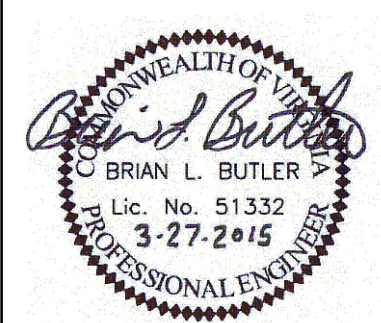
- NOTES:**
- EXISTING YAGI ANTENNA, MAST AND CABLE TO BE REMOVED AFTER SUCCESSFUL INSTALLATION OF THE NEW PUMP STATION CONTROL PANEL (PSCP).
 - EXISTING MOSCAD UNIT AND RADIO TO BE REMOVED FROM EXISTING PANEL.
 - EXISTING TELOG PANEL TO REMAIN. REMOVE EXISTING ANALOG AND DIGITAL INPUTS BETWEEN MOSCAD UNIT AND TELOG UNIT. REPLACE THESE SIGNALS WITH IDENTICAL SIGNALS ORIGINATING FROM THE NEW PSCP.
 - REMOVE EXISTING PUMP CONTROL PANEL AFTER INSTALLATION AND TESTING OF THE TEMPORARY CONTROL PANEL. REWIRE CONTROLS TO THE NEW PSCP AS SHOWN ON THE DRAWINGS.
 - REFER TO DRAWING G-13 FOR DETAILS OF THE CONSTRUCTION PHASING REQUIREMENTS FOR THE NEW PSCP.
 - PROVIDE NEW STEEL POLE, ANTENNA CABLE AND ANTENNA. REFER TO SPEC SECTION 17375 FOR STEEL POLE REQUIREMENTS.
 - PROVIDE NEW TERMINAL BLOCKS IN EXISTING PANEL AND EXTEND EXISTING CONTROL WIRING TO THE NEW PSCP.
 - RELOCATE EXISTING AIR COMPRESSOR. EXACT LOCATION TO BE COORDINATED WITH HRSD.
 - REFER TO DRAWING G-14 FOR PANEL LAYOUT.

CONDUIT/CABLE SCHEDULE	
A	ANTENNA CABLE
B	2 #12, 1 #12 GND IN 3/4" C 12 #14 IN 3/4" C 7 STP IN 1-1/2" C
C	42 #14 IN 1-1/2" C 8 STP IN 1-1/2" C
D	18 #14 IN 3/4" C 3 STP IN 3/4" C
E	NOT USED



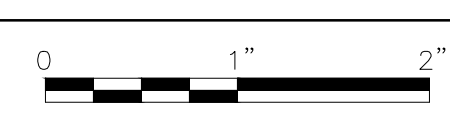
ISSUE	DATE	DESCRIPTION
1	MAR 27 2015	CONFORMED DRAWINGS
0	DEC 2014	BID

PROJECT MANAGER:	D. FOOTE
DESIGNED BY:	B. BUTLER
DRAWN BY:	G. BUI
PROJECT NUMBER:	8582



HAMPTON ROADS SANITATION DISTRICT
VIRGINIA BEACH, VIRGINIA

INTERCEPTOR SYSTEMS PUMP STATION
CONTROL AND SCADA



FILENAME	04226EN42.DWG
SCALE	AS NOTED

DRAWING NUMBER	EN-42
SHEET	86 OF 256