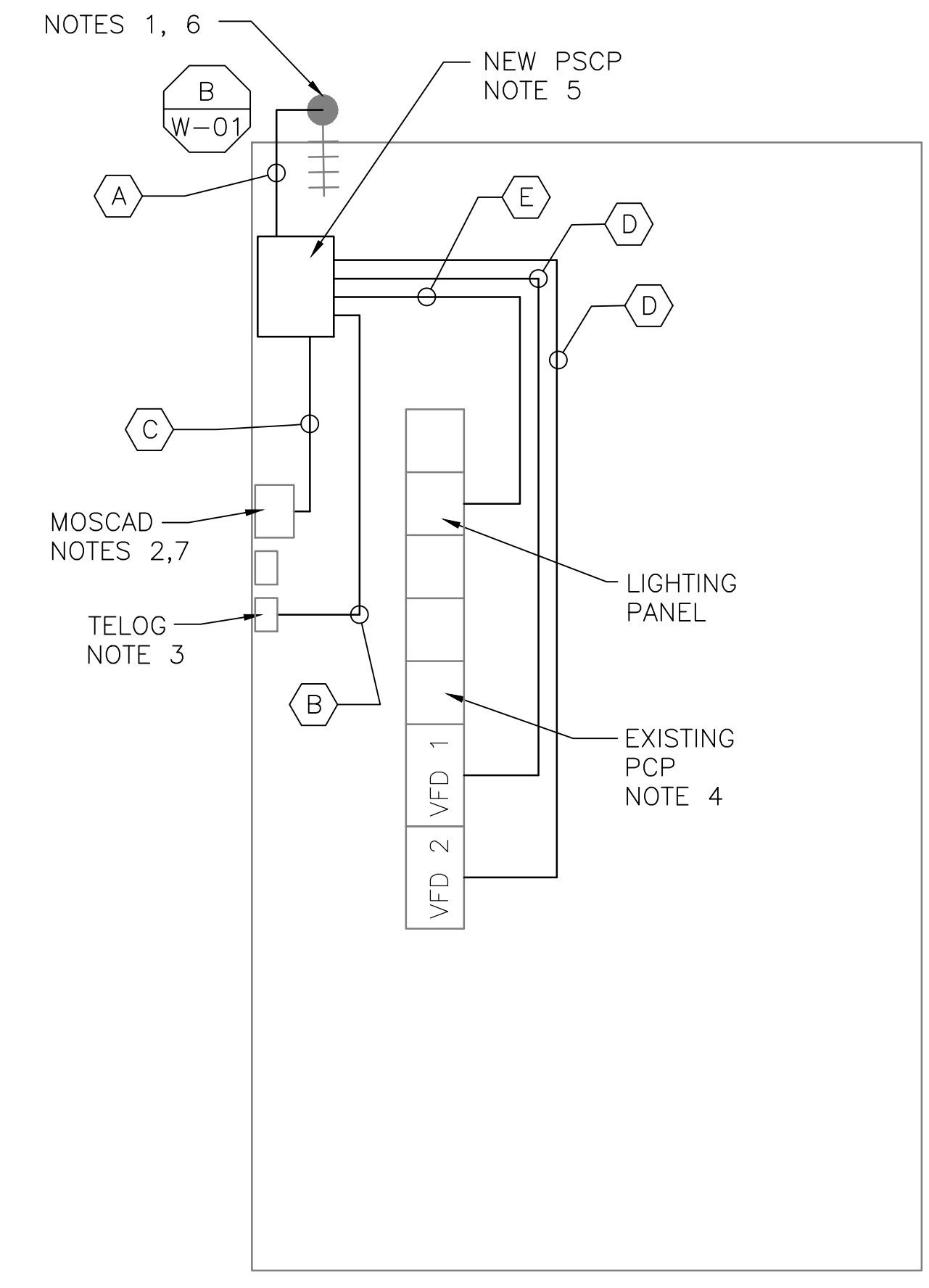


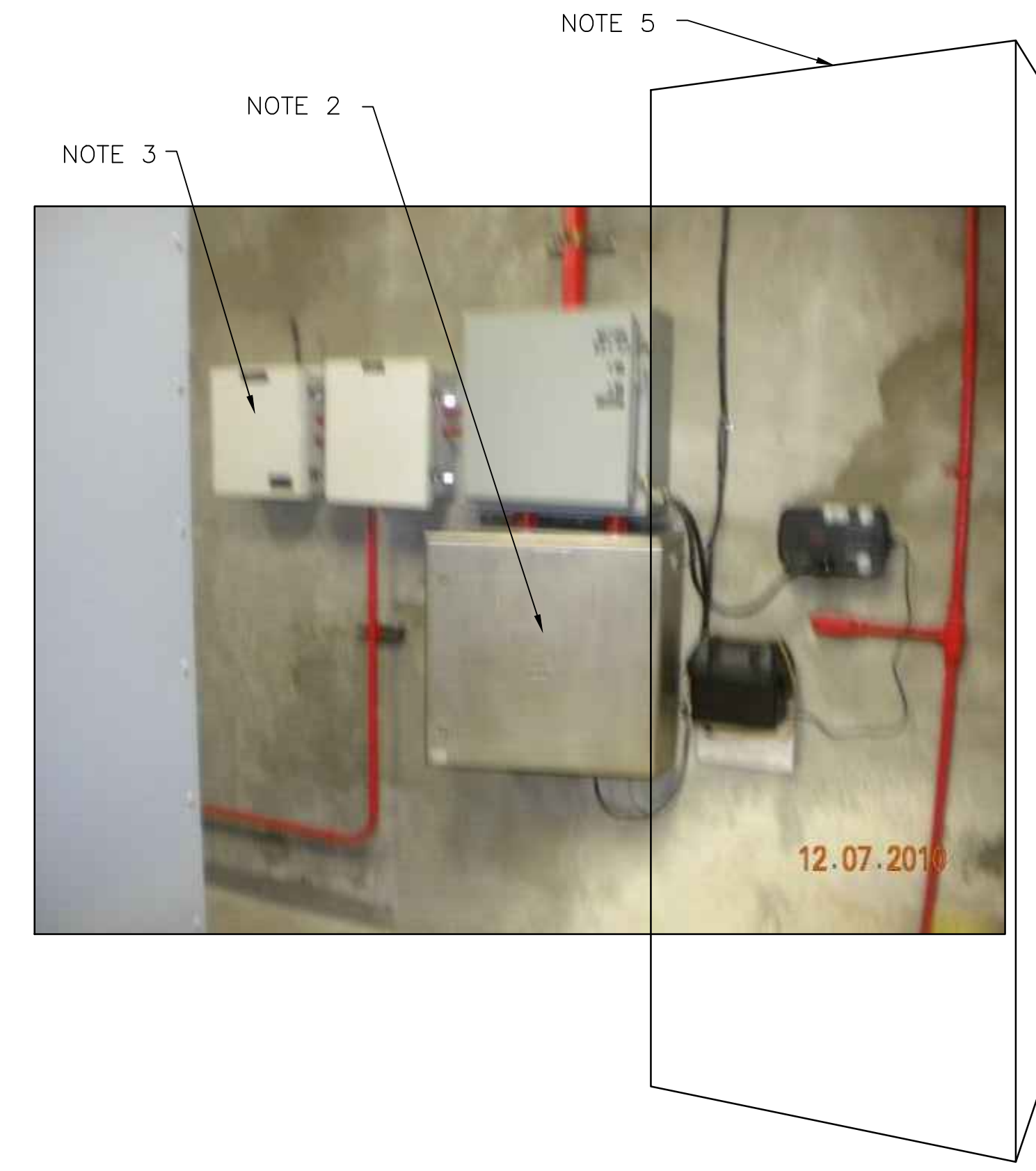
5 SITE PLAN
SCALE: 1" = 20'-0"



1 FLOOR PLAN
SCALE: 1/4" = 1'-0"



2 EXISTING ANTENNA LOCATION
SCALE: NOT TO SCALE



3 EXISTING MOSCAD PANEL
SCALE: NOT TO SCALE



4 EXISTING CONTROL PANEL
SCALE: NOT TO SCALE

NOTES:

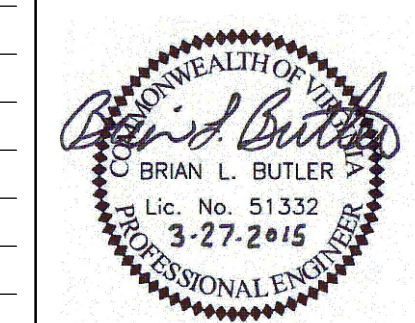
1. EXISTING YAGI ANTENNA AND CABLE TO BE REMOVED AFTER SUCCESSFUL INSTALLATION OF THE NEW PUMP STATION CONTROL PANEL (PSCP).
2. EXISTING MOSCAD UNIT AND RADIO TO BE REMOVED FROM EXISTING PANEL.
3. EXISTING TELOG PANEL TO REMAIN. REMOVE EXISTING ANALOG AND DIGITAL INPUTS BETWEEN MOSCAD UNIT AND TELOG UNIT. REPLACE THESE SIGNALS WITH IDENTICAL SIGNALS ORIGINATING FROM THE NEW PSCP.
4. EXISTING PUMP CONTROL PANEL TO REMAIN. REMOVE EXISTING PLC'S, RELAYS, AND CONTROL EQUIPMENT AFTER INSTALLATION AND TESTING OF THE NEW PSCP.
5. REFER TO DRAWING G-11 FOR DETAILS OF THE CONSTRUCTION PHASING REQUIREMENTS FOR THE NEW PSCP.
6. MOVE EXISTING ANTENNA DOWN ON MAST TO ROOF LEVEL AND INSTALL NEW ANTENNA ON TOP OF MAST. INSTALL NEW ANTENNA CABLE.
7. PROVIDE NEW TERMINAL BLOCKS IN EXISTING PANEL AND EXTEND EXISTING CONTROL WIRING TO THE NEW PSCP.
8. REFER TO DRAWING G-14 FOR PANEL LAYOUT.

CONDUIT/CABLE SCHEDULE	
A	ANTENNA CABLE
	2 #12, 1 #12 GND IN 3/4" C
B	6 #14 IN 3/4" C
	8 STP IN 1-1/2" C
C	48 #14 IN 1-1/2" C
	8 STP IN 1-1/2" C
D	14 #14 IN 3/4" C
	3 STP IN 1-1/2" C
E	2 #12, 1 #12 GND IN 3/4" C



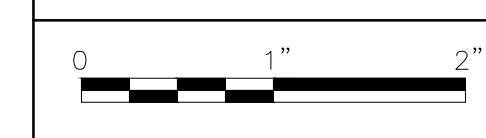
ISSUE	DATE	DESCRIPTION
1	MAR 27 2015	CONFORMED DRAWINGS
0	DEC 2014	BID

PROJECT MANAGER:	D. FOOTE
DESIGNED BY:	B. BUTLER
DRAWN BY:	G. BUI
PROJECT NUMBER:	8582



HAMPTON ROADS SANITATION DISTRICT
VIRGINIA BEACH, VIRGINIA

INTERCEPTOR SYSTEMS PUMP STATION
CONTROL AND SCADA



FILENAME	04221EN37.DWG
SCALE	AS NOTED

DRAWING NUMBER	EN-37
----------------	-------