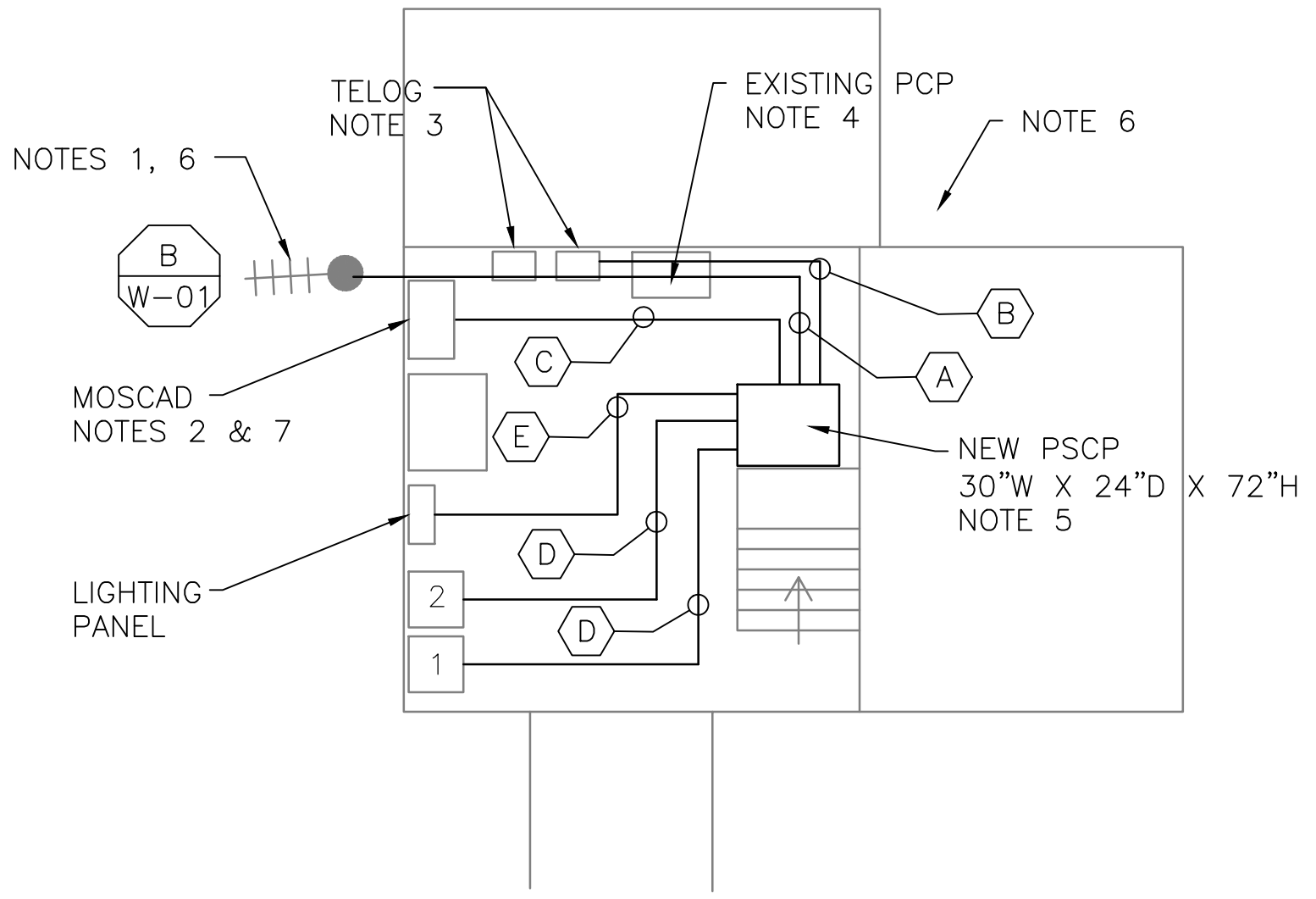


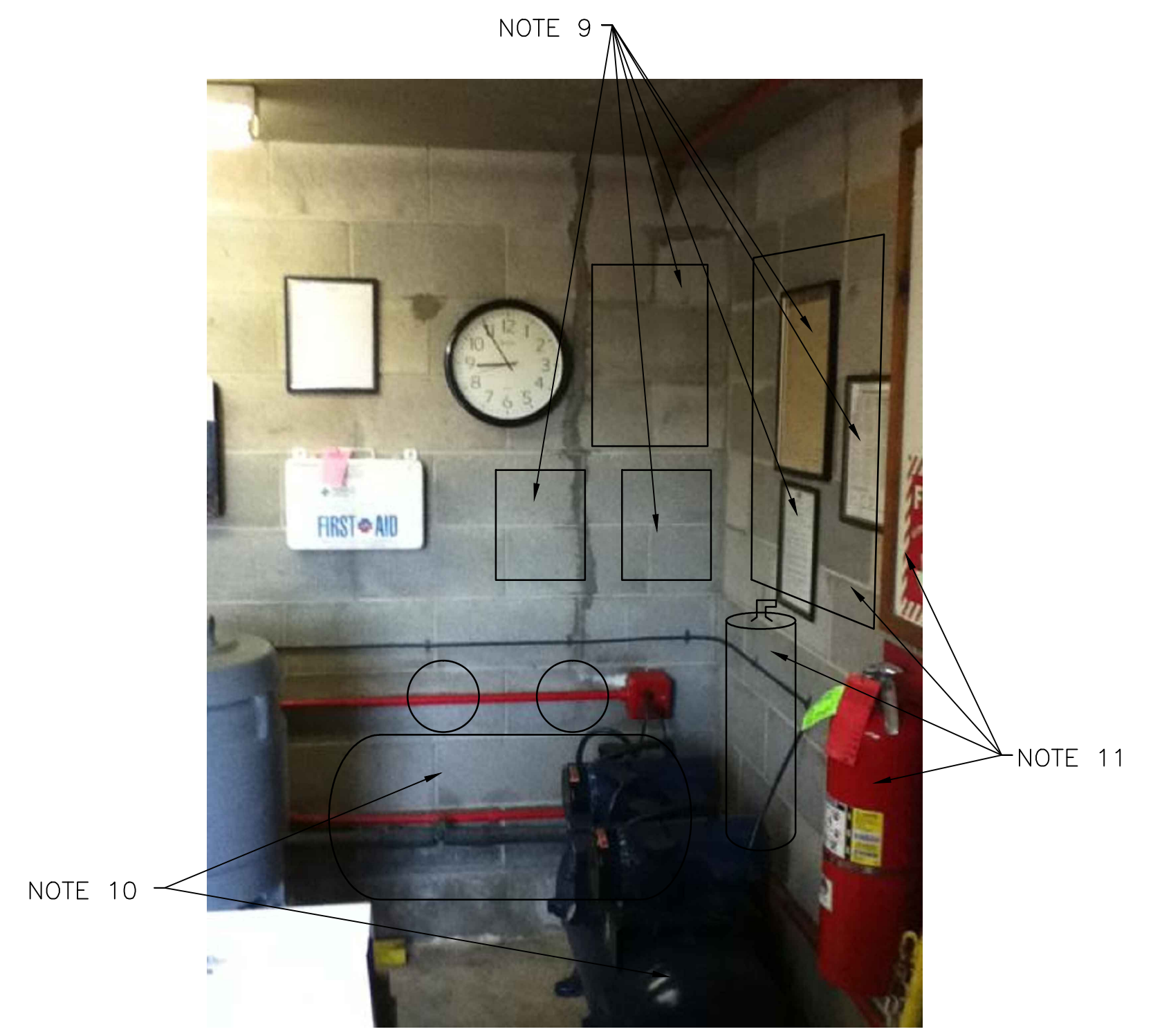
2 EXISTING ANTENNA LOCATION
SCALE: NOT TO SCALE

- NOTES:**
- EXISTING YAGI ANTENNA AND CABLE TO BE REMOVED AFTER SUCCESSFUL INSTALLATION OF THE NEW PUMP STATION CONTROL PANEL (PSCP).
 - EXISTING MOSCAD UNIT AND RADIO TO BE REMOVED FROM EXISTING PANEL.
 - EXISTING TELOG PANEL TO REMAIN. REMOVE EXISTING ANALOG AND DIGITAL INPUTS BETWEEN MOSCAD UNIT AND TELOG UNIT. REPLACE THESE SIGNALS WITH IDENTICAL SIGNALS ORIGINATING FROM THE NEW PSCP.
 - EXISTING PUMP CONTROL PANEL TO BE REMOVED AFTER INSTALLATION AND TESTING OF THE NEW CONTROL PANEL.
 - REFER TO DRAWING G-11 FOR DETAILS OF THE CONSTRUCTION PHASING REQUIREMENTS FOR THE NEW PSCP.
 - MOVE EXISTING ANTENNA DOWN ON MAST TO ROOF LEVEL AND INSTALL NEW ANTENNA ON TOP OF MAST. INSTALL NEW ANTENNA CABLE.
 - PROVIDE NEW TERMINAL BLOCKS IN EXISTING PANEL AND EXTEND EXISTING CONTROL WIRING TO THE NEW PSCP.
 - REFER TO DRAWING G-14 FOR PANEL LAYOUT.
 - RELOCATE PLACARDS TO THE WEST WALL AS DEPICTED.
 - ROTATE THE AIR COMPRESSOR ALONG THE WEST WALL, RECONFIGURE TUBING AS REQUIRED. MAINTAIN ACCESS TO THE WATER VALVE.
 - RELOCATE FIRE EXTINGUISHER AND RELATED PLACARD ON THE NORTH WALL AS DEPICTED. PAINT A RED RECTANGLE ON THE WALL AT THE NEW MOUNTING LOCATION IN ACCORDANCE WITH HRSD STANDARDS.

CONDUIT/CABLE SCHEDULE	
A	ANTENNA CABLE
	2 #12, 1 #12 GND IN 3/4" C
B	6 #14 IN 3/4" C
	3 STP IN 3/4" C
C	40 #14 IN 1-1/2" C
	4 STP IN 1" C
D	14 #14 IN 3/4" C
E	2 #12, 1 #12 GND IN 3/4" C



3 EXISTING MOSCAD PANEL
SCALE: NOT TO SCALE

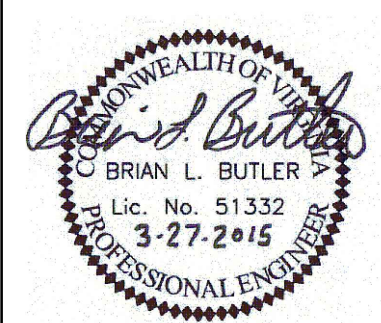


4 AIR COMPRESSOR, FIRE EXTINGUISHER AND PLACARDS
SCALE: NOT TO SCALE



ISSUE	DATE	DESCRIPTION
1	MAR 27 2015	CONFORMED DRAWINGS
0	DEC 2014	BID

PROJECT MANAGER:	D. FOOTE
DESIGNED BY:	B. BUTLER
DRAWN BY:	G. BUI
PROJECT NUMBER:	8582



HAMPTON ROADS SANITATION DISTRICT
VIRGINIA BEACH, VIRGINIA

INTERCEPTOR SYSTEMS PUMP STATION
CONTROL AND SCADA

FERGUSON PARK GRAVITY LIFT STATION NO 210 SITE PLAN

0 1" 2"

FILENAME	04210EN23.DWG	DRAWING NUMBER	EN-23
SCALE	AS NOTED	SHEET	67 OF 256