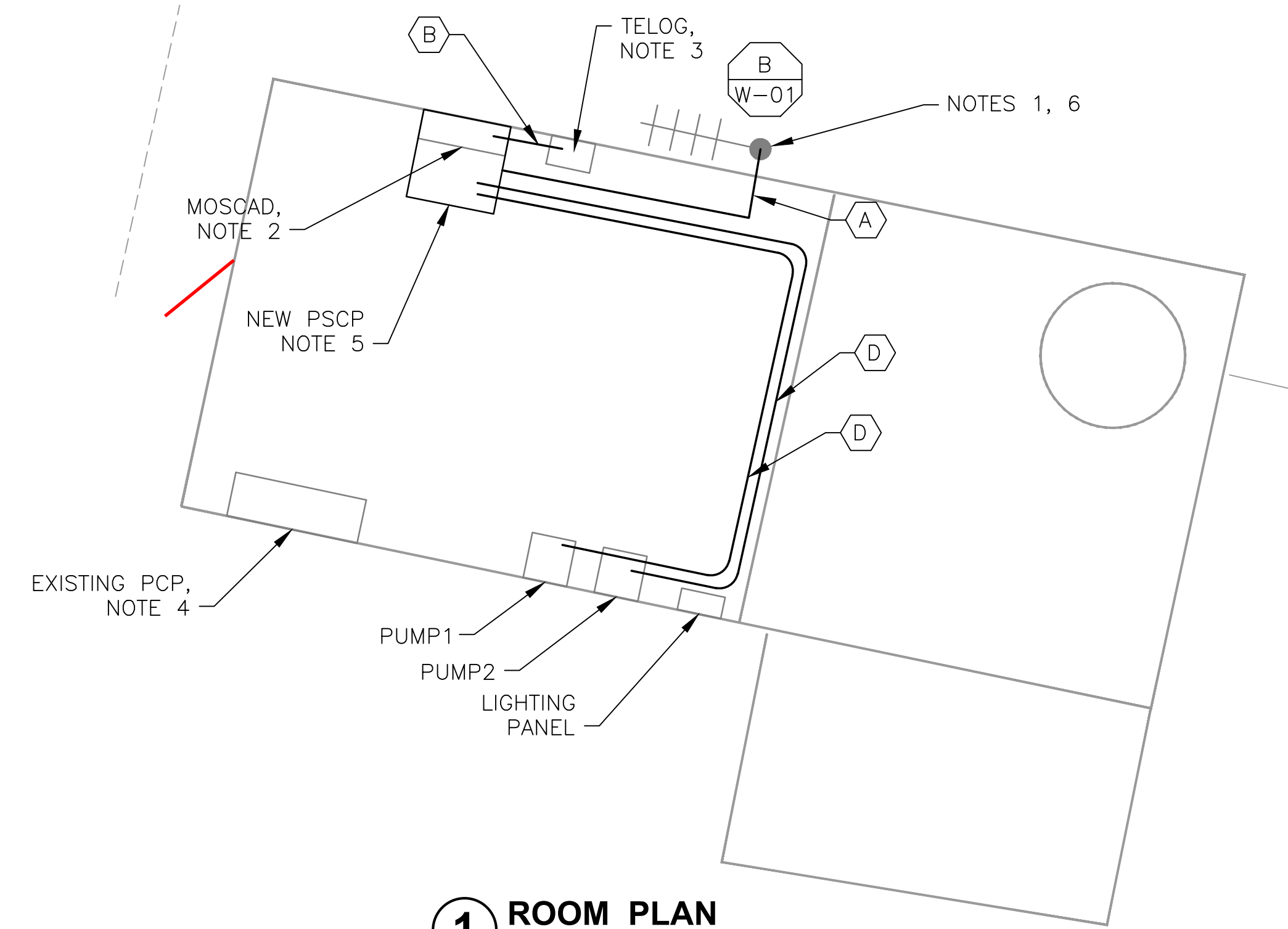


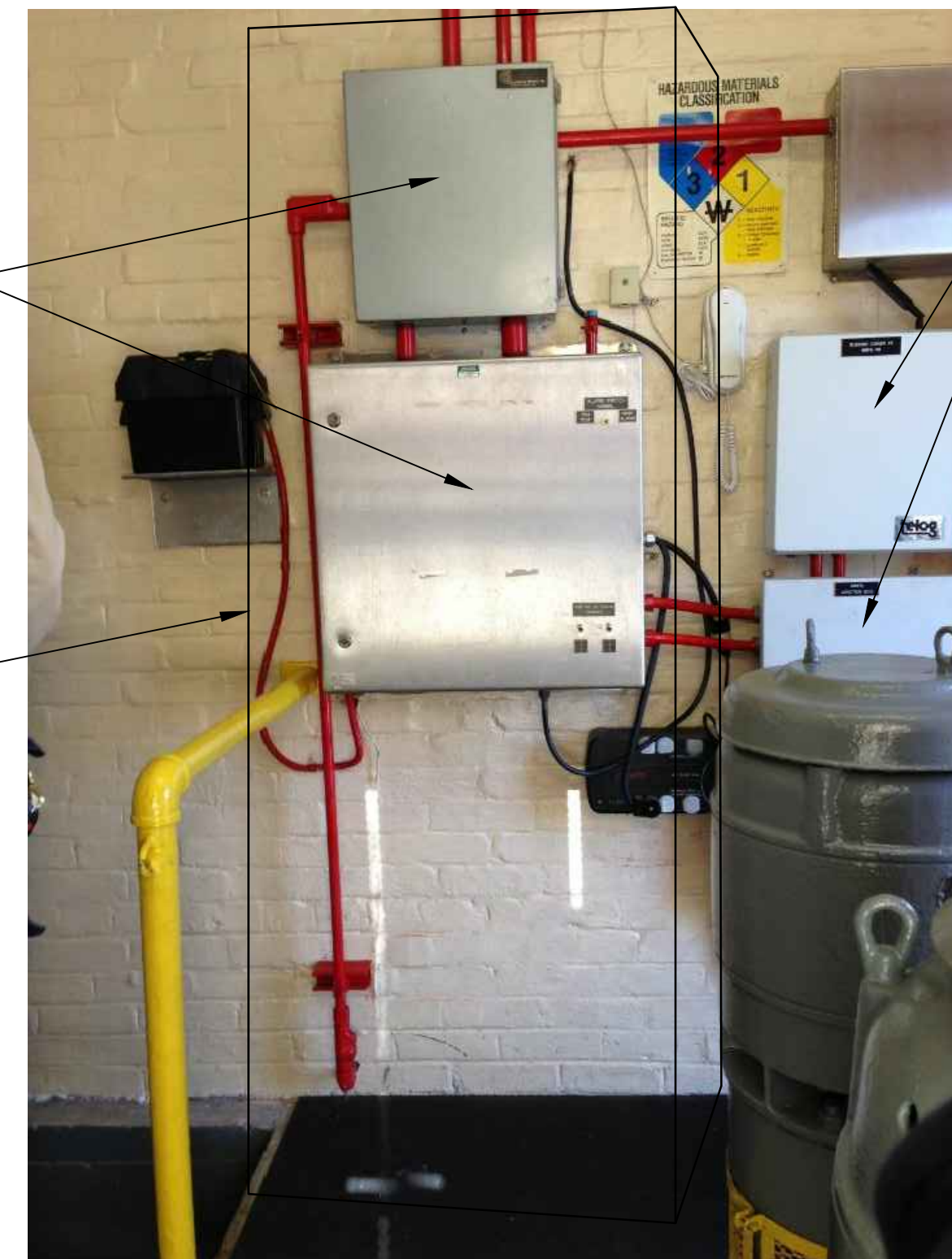
**5 SITE PLAN**  
SCALE: 1" = 10'-0"



**2 EXISTING ANTENNA LOCATION**  
SCALE: NOT TO SCALE



**1 ROOM PLAN**  
SCALE: 3/8" = 1'-0"



**3 EXISTING MOSCAD PANEL**  
SCALE: NOT TO SCALE



**4 EXISTING CONTROL PANEL**  
SCALE: NOT TO SCALE

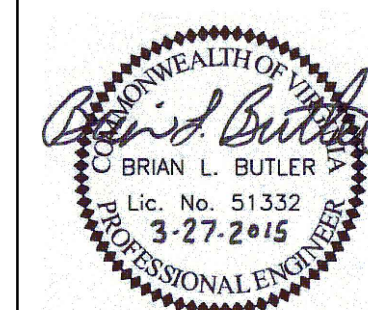
- NOTES:**
- EXISTING YAGI ANTENNA AND CABLE TO BE REMOVED AFTER SUCCESSFUL INSTALLATION OF THE NEW PUMP STATION CONTROL PANEL (PSCP).
  - EXISTING MOSCAD AND TERMINATION PANEL TO BE TEMPORARILY RELOCATED; THEN REMOVED FROM THE SITE AFTER INSTALLATION AND TESTING OF THE NEW SCADA CONTROL PANEL. REFER TO THE I/O LIST FOR EXISTING MOSCAD ANALOG AND DIGITAL I/O SIGNALS WHICH WILL BE RE-TERMINATED WITHIN THE NEW PSCP.
  - EXISTING TELOG PANEL TO REMAIN. REMOVE EXISTING ANALOG AND DIGITAL INPUTS BETWEEN MOSCAD UNIT AND TELOG UNIT. REPLACE THESE SIGNALS WITH IDENTICAL SIGNALS ORIGINATING FROM THE NEW PSCP.
  - EXISTING PUMP CONTROL PANEL TO REMAIN. REMOVE EXISTING PLC'S, RELAYS, AND CONTROL EQUIPMENT AFTER INSTALLATION AND TESTING OF THE NEW PSCP.
  - REFER TO DRAWING G-13 FOR DETAILS OF THE CONSTRUCTION PHASING REQUIREMENTS FOR THE NEW PSCP.
  - MOVE EXISTING ANTENNA DOWN ON MAST TO ROOF LEVEL AND INSTALL NEW ANTENNA ON TOP OF MAST. INSTALL NEW ANTENNA CABLE.
  - REFER TO DRAWING G-14 FOR PANEL LAYOUT.

CONDUIT/CABLE SCHEDULE	
(A)	ANTENNA CABLE
(B)	2 #12, 1 #12 GND IN 3/4" C
(C)	6 #14 IN 3/4" C
(D)	6 STP IN 1" C
(E)	NOT USED
(F)	NOT USED
(G)	14 #14 IN 3/4" C
(H)	NOT USED



ISSUE	DATE	DESCRIPTION
1	MAR 27 2015	CONFORMED DRAWINGS
0	DEC 2014	BID

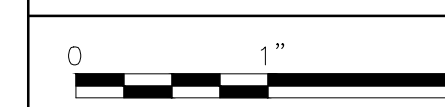
PROJECT MANAGER:	D. FOOTE
DESIGNED BY:	B. BUTLER
DRAWN BY:	G. BUI
PROJECT NUMBER:	8582



HAMPTON ROADS SANITATION DISTRICT  
VIRGINIA BEACH, VIRGINIA

INTERCEPTOR SYSTEMS PUMP STATION  
CONTROL AND SCADA

BLOXOM'S CORNER  
GRAVITY LIFT STATION  
NO 204  
SITE PLAN



FILENAME	04204EN18.DWG
SCALE	AS NOTED

DRAWING NUMBER	EN-18
SHEET	62 OF 256