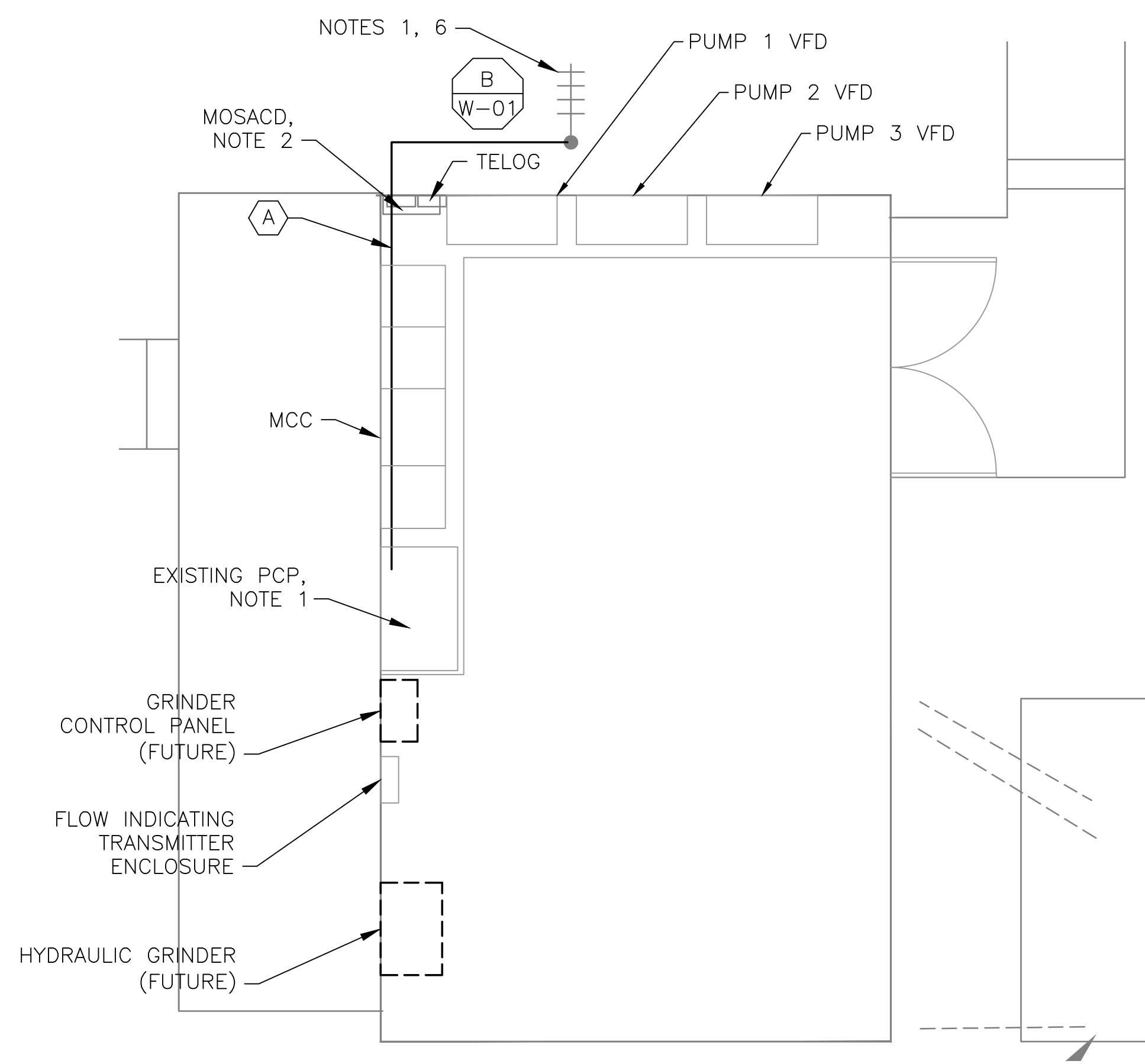


**5 SITE PLAN**  
SCALE: 1" = 10'-0"



**2 ANTENNA LOCATION**  
SCALE: NOT TO SCALE

- NOTES:**
- CONTROL PANEL HAS BEEN RECENTLY UPGRADED. REMOVE EXISTING PLC, OIT AND INSTALL NEW RTU, OIT AND RADIO IN THE EXISTING CONTROL PANEL.
  - REMOVE EXISTING MOSCAD RTU AND APPURTENANCES.
  - MOVE EXISTING ANTENNA DOWN ON MAST TO ROOF LEVEL AND INSTALL NEW ANTENNA ON TOP OF MAST. INSTALL NEW ANTENNA CABLE. EXISTING RADIO, YAGI ANTENNA AND CABLE TO BE REMOVED AFTER SUCCESSFUL INSTALLATION OF THE NEW RTU, RADIO, ANTENNA AND ANTENNA CABLE.



**1 ROOM PLAN**  
SCALE: 1/4" = 1'-0"



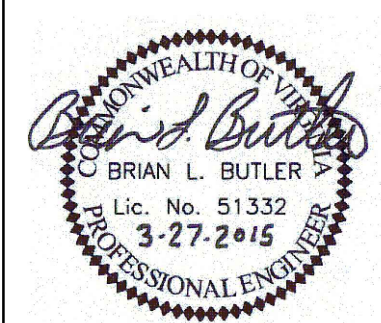
**3 EXISTING MOSCAD PANEL**  
SCALE: NOT TO SCALE

CONDUIT/CABLE SCHEDULE	
A	ANTENNA CABLE
B	NOT USED
C	NOT USED
D	NOT USED



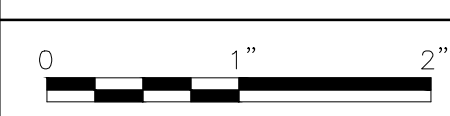
ISSUE	DATE	DESCRIPTION
1	MAR 27 2015	CONFORMED DRAWINGS
0	DEC 2014	BID

PROJECT MANAGER:	D. FOOTE
DESIGNED BY:	B. BUTLER
DRAWN BY:	G. BUI
PROJECT NUMBER:	8582



**HAMPTON ROADS SANITATION DISTRICT**  
VIRGINIA BEACH, VIRGINIA

**INTERCEPTOR SYSTEMS PUMP STATION**  
CONTROL AND SCADA



FILENAME	04203EN17.DWG
SCALE	AS NOTED

DRAWING NUMBER  
**EN-17**

SHEET **61** OF **256**

**BAYSHORE**  
**GRAVITY LIFT STATION**  
**NO 203**  
**SITE PLAN**