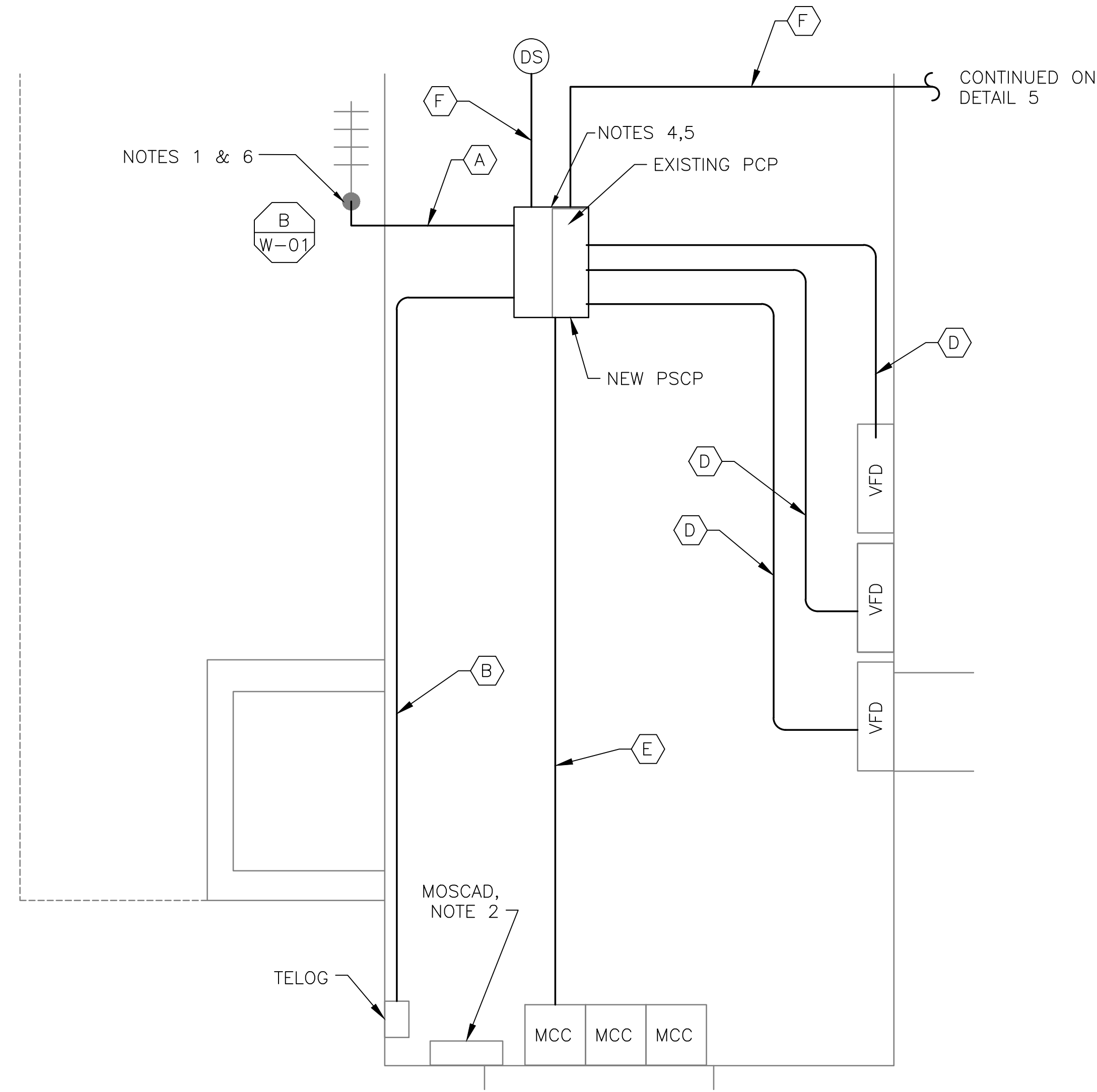
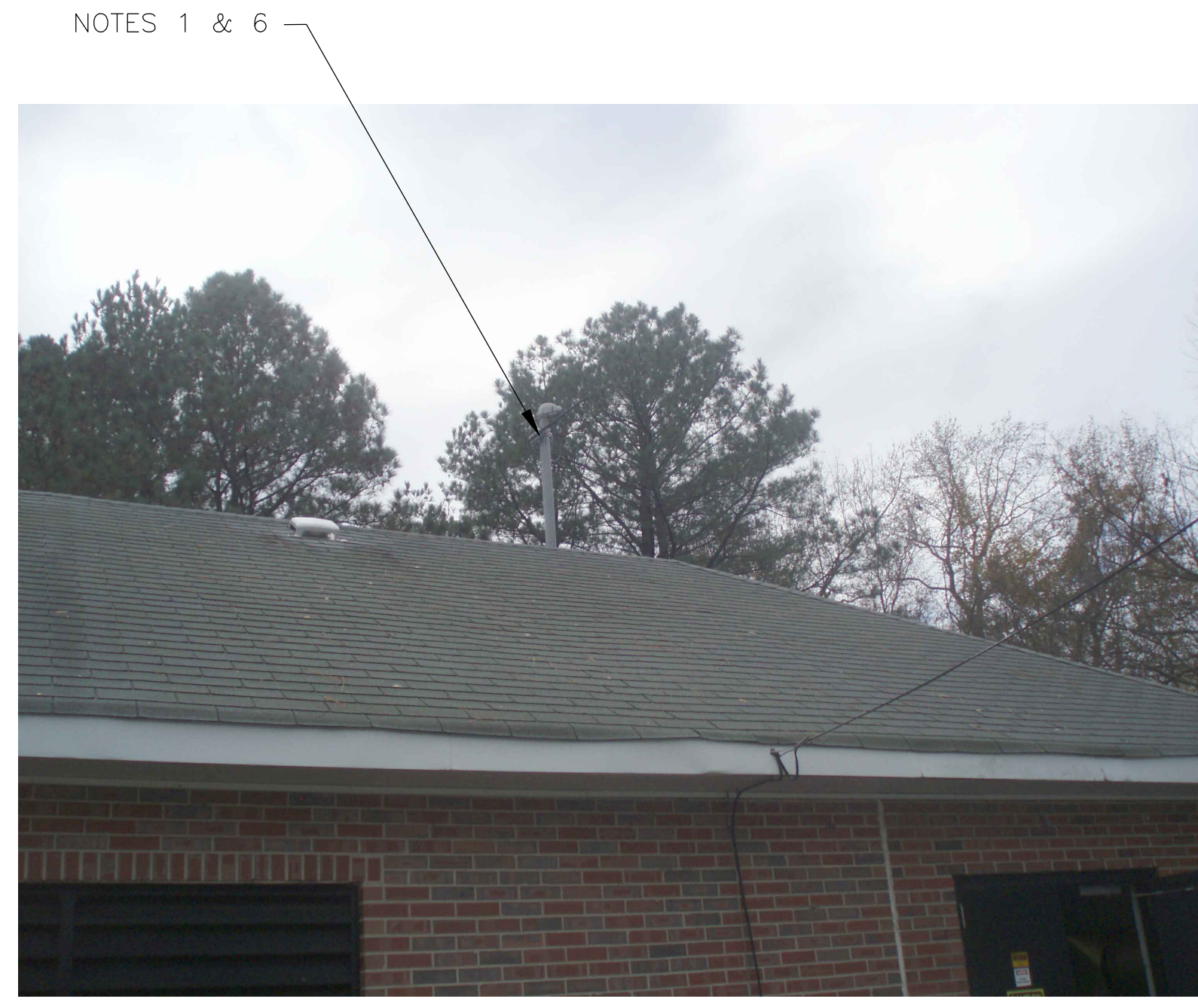


5 SITE PLAN
SCALE: 1" = 20'-0"



1 ROOM PLAN
SCALE: 3/8" = 1'-0"



2 EXISTING ANTENNA LOCATION
SCALE: NOT TO SCALE



3 CONTROL PANEL LOCATION
SCALE: NOT TO SCALE



4 EXISTING MOSCAD PANEL
SCALE: NOT TO SCALE

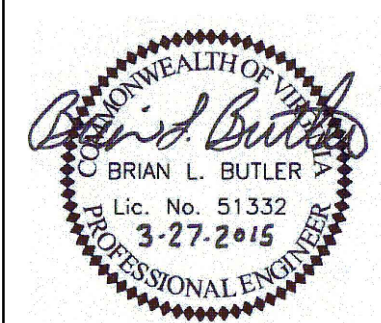
- NOTES:**
- EXISTING YAGI ANTENNA AND CABLE TO BE REMOVED AFTER SUCCESSFUL INSTALLATION OF THE NEW PUMP STATION CONTROL PANEL (PSCP).
 - EXISTING MOSCAD AND RADIO PANEL TO BE REMOVED.
 - EXISTING TELOG PANEL TO REMAIN. REMOVE EXISTING ANALOG AND DIGITAL INPUTS BETWEEN MOSCAD UNIT AND TELOG UNIT. REPLACE THESE SIGNALS WITH IDENTICAL SIGNALS ORIGINATING FROM THE NEW PSCP.
 - REMOVE EXISTING PUMP CONTROL PANEL AFTER INSTALLATION OF THE TEMPORARY CONTROL PANEL. REWIRE CONTROLS TO THE NEW PSCP AS SHOWN ON THE DRAWINGS.
 - REFER TO DRAWING G-12 FOR DETAILS OF THE CONSTRUCTION PHASING REQUIREMENTS FOR THE NEW PSCP.
 - MOVE EXISTING ANTENNA DOWN ON MAST AND INSTALL NEW ANTENNA ON TOP OF MAST. INSTALL NEW ANTENNA CABLE.
 - REFER TO DRAWING G-14 FOR PANEL LAYOUT.

CONDUIT/CABLE SCHEDULE	
(A)	ANTENNA CABLE
(B)	2 #12, 1 #12 GND IN 3/4" C 8 #14 IN 3/4" C 9 STP IN 1-1/2" C
(C)	NOT USED
(D)	16 #14 IN 3/4" C 3 STP IN 1" C
(E)	2 #12, 1 #12 GND IN 3/4" C
(F)	2 #12 IN 3/4" C



ISSUE	DATE	DESCRIPTION
1	MAR 27 2015	CONFORMED DRAWINGS
0	DEC 2014	BID

PROJECT MANAGER:	D. FOOTE
DESIGNED BY:	B. BUTLER
DRAWN BY:	G. BUI
PROJECT NUMBER:	8582



HAMPTON ROADS SANITATION DISTRICT
VIRGINIA BEACH, VIRGINIA

INTERCEPTOR SYSTEMS PUMP STATION
CONTROL AND SCADA



FILENAME	05144ES66.DWG
SCALE	AS NOTED

DRAWING NUMBER	ES-66
SHEET	150 OF 256

ELMHURST
GRAVITY LIFT STATION
NO 144
SITE PLAN