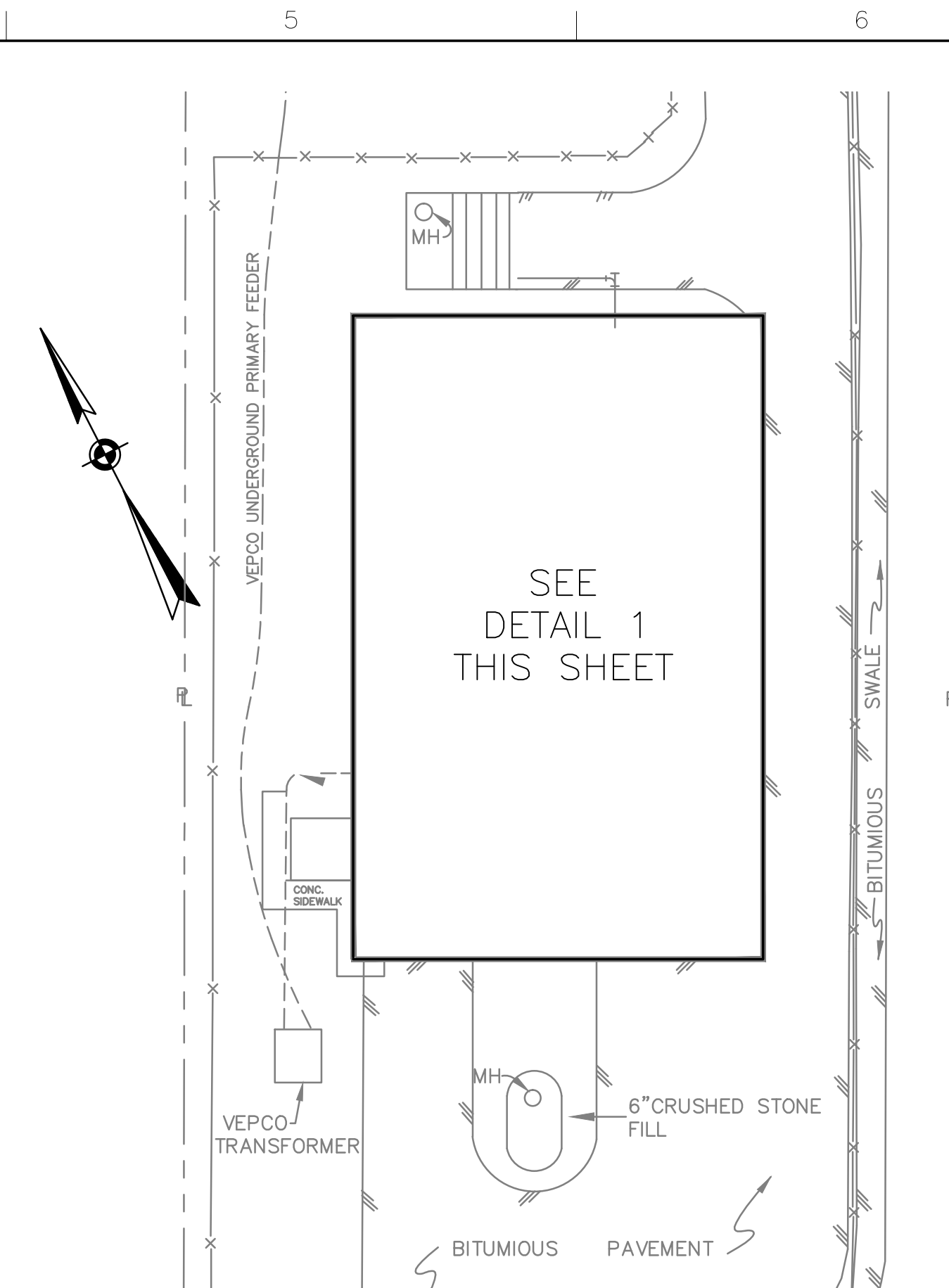
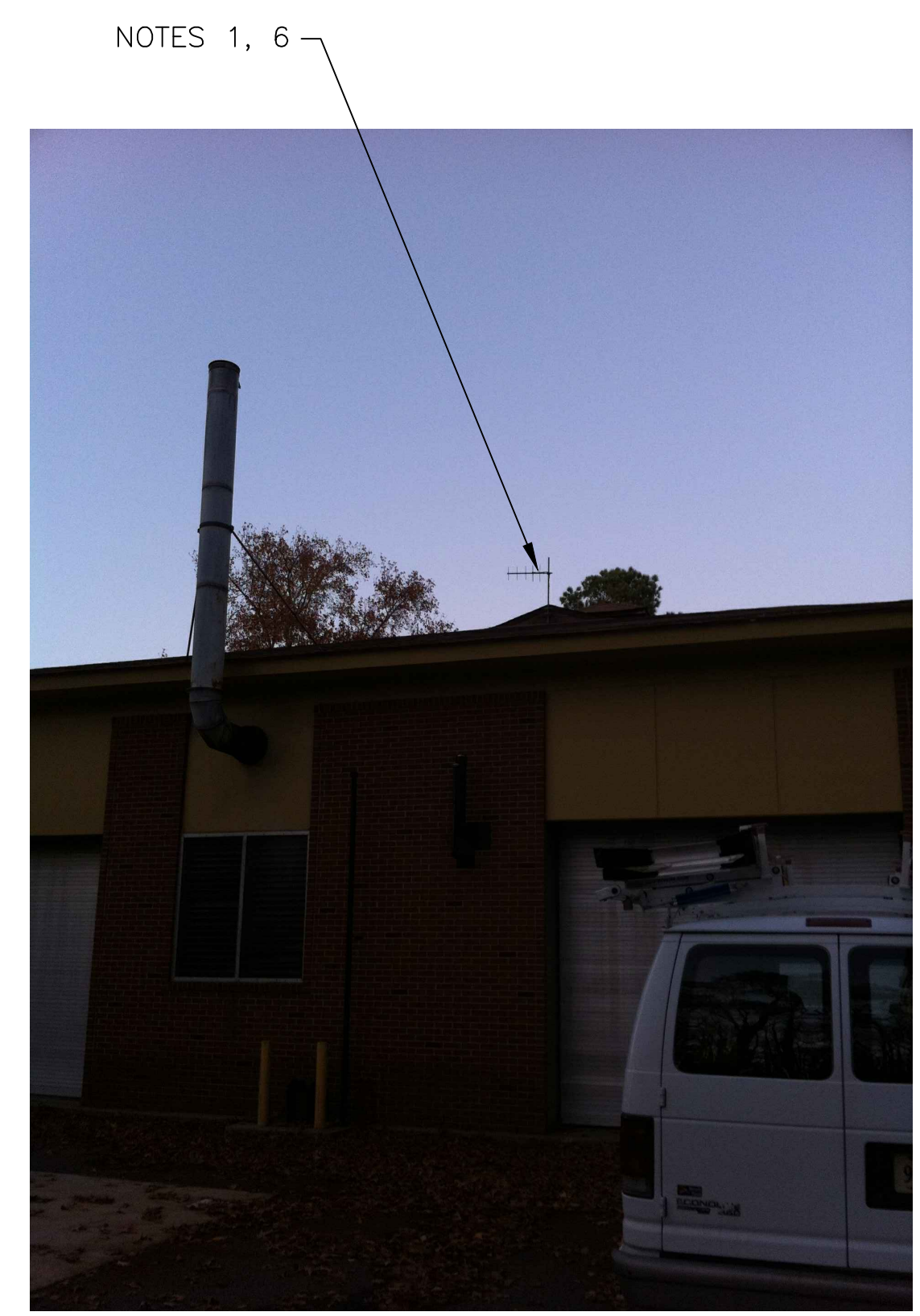


1 ROOM PLAN
SCALE: 1/8" = 1'-0"



4 SITE PLAN
SCALE: 1" = 20'-0"



2 ANTENNA LOCATION
SCALE: NOT TO SCALE



3 EXISTING MOSCAD PANEL
SCALE: NOT TO SCALE

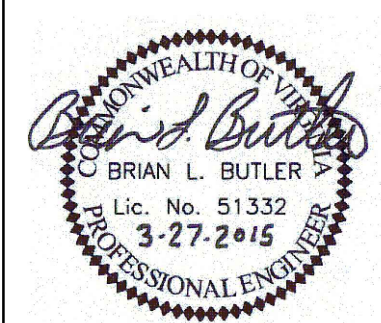
- NOTES:**
- EXISTING YAGI ANTENNA AND CABLE TO BE REMOVED AFTER SUCCESSFUL INSTALLATION OF THE NEW PUMP STATION CONTROL PANEL (PSCP).
 - EXISTING MOSCAD PANEL AND TERMINATION PANEL TO BE TEMPORARILY RELOCATED; THEN REMOVED FROM THE SITE AFTER INSTALLATION AND TESTING OF THE NEW PSCP. REFER TO THE I/O LIST FOR EXISTING MOSCAD ANALOG AND DIGITAL I/O SIGNALS WHICH WILL BE RE-TERMINATED WITHIN THE NEW PSCP.
 - EXISTING TELOG PANEL TO BE RELOCATED AND MOUNTED AS CLOSE TO THE NEW PSCP AS POSSIBLE. EXACT LOCATION TO BE COORDINATED WITH HRSD. REMOVE EXISTING ANALOG AND DIGITAL INPUTS BETWEEN MOSCAD UNIT AND TELOG UNIT. REPLACE THESE SIGNALS WITH IDENTICAL SIGNALS ORIGINATING FROM THE NEW PSCP.
 - REMOVE EXISTING PUMP CONTROL PANEL AFTER INSTALLATION OF THE NEW TEMPORARY CONTROL PANEL PROVIDE UNDER THIS PROJECT. REWIRE CONTROLS TO THE NEW PSCP AS SHOWN ON THE DRAWINGS.
 - REFER TO DRAWING G-12 FOR DETAILS OF THE CONSTRUCTION PHASING REQUIREMENTS FOR THE NEW PSCP.
 - MOVE EXISTING ANTENNA DOWN ON MAST AND INSTALL NEW ANTENNA ON TOP OF MAST. INSTALL NEW ANTENNA CABLE.
 - REFER TO DRAWING G-14 FOR PANEL LAYOUT.

CONDUIT/CABLE SCHEDULE	
A	ANTENNA CABLE
B	2 #12, 1 #12 GND IN 3/4" C 12 #14 IN 3/4" C 15 STP IN 1-1/2" C
C	NOT USED
D	16 #14 IN 3/4" C 3 STP IN 3/4" C
E	2 #12, 1 #12 GND IN 3/4" C
F	2 #12 IN 3/4" C



ISSUE	DATE	DESCRIPTION
1	MAR 27 2015	CONFORMED DRAWINGS
0	DEC 2014	BID

PROJECT MANAGER:	D. FOOTE
DESIGNED BY:	B. BUTLER
DRAWN BY:	G. BUI
PROJECT NUMBER:	8582



HAMPTON ROADS SANITATION DISTRICT
VIRGINIA BEACH, VIRGINIA

INTERCEPTOR SYSTEMS PUMP STATION
CONTROL AND SCADA

**ATLANTIC
PRESSURE REDUCING STATION
NO 140
SITE PLAN**

0 1" 2"

FILENAME	05140ES15.DWG	DRAWING NUMBER	ES-15
SCALE	AS NOTED	SHEET	104 OF 256