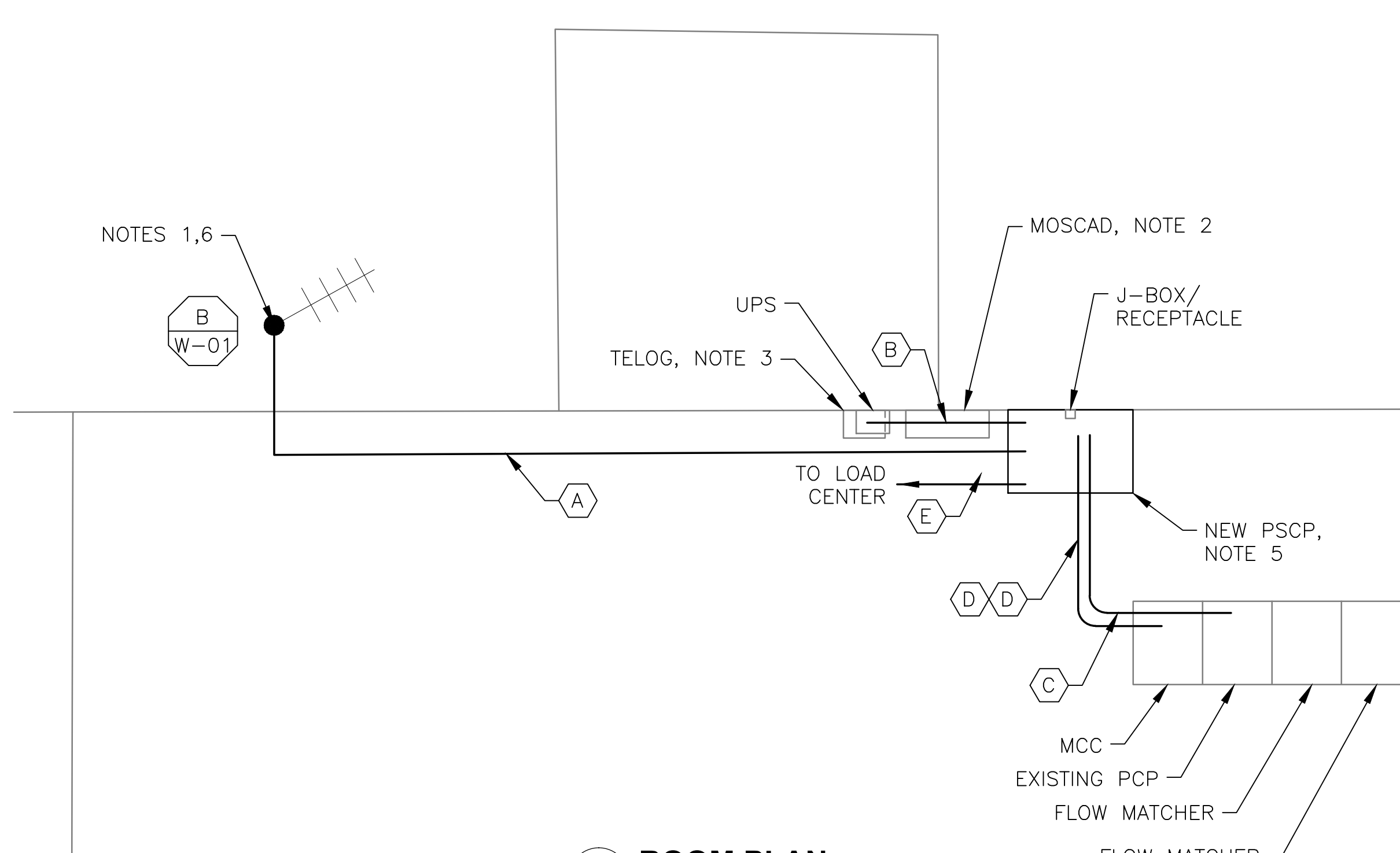


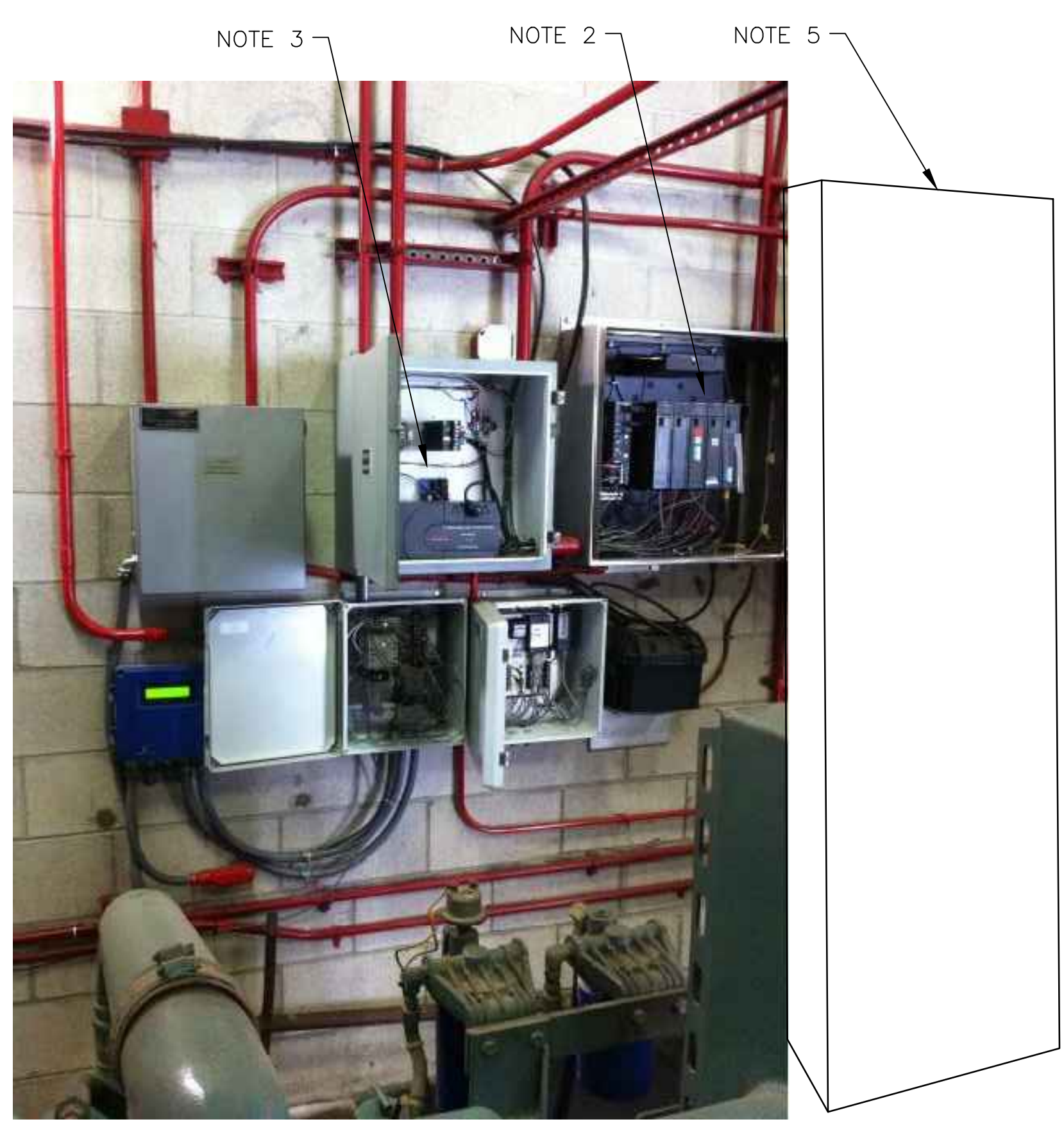
5 SITE PLAN
SCALE: 1" = 20'-0"



1 ROOM PLAN
SCALE: 3/8" = 1'-0"



2 EXISTING ANTENNA LOCATION
SCALE: NOT TO SCALE



4 EXISTING MOSCAD PANEL LOCATION
SCALE: NOT TO SCALE



3 EXISTING CONTROL PANEL
SCALE: NOT TO SCALE

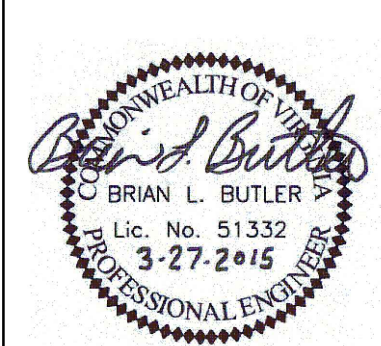
- NOTES:**
- EXISTING YAGI ANTENNA AND CABLE TO BE REMOVED AFTER SUCCESSFUL INSTALLATION OF THE NEW PUMP STATION CONTROL PANEL (PSCP).
 - EXISTING MOSCAD, RADIO, AND UPS PANEL TO BE REMOVED. RE-ROUTE ALL SIGNALS TO THE NEW PSCP USING NEW WIRES AND CONDUITS. ALL SIGNALS SHALL BE WIRED FROM ORIGINATING LOCATIONS (i.e., INSTRUMENTS AND DEVICES).
 - EXISTING TELOG PANEL TO REMAIN. REMOVE EXISTING ANALOG AND DIGITAL INPUTS BETWEEN MOSCAD UNIT AND TELOG UNIT. REPLACE THESE SIGNALS WITH IDENTICAL SIGNALS ORIGINATING FROM THE NEW PSCP.
 - RETAIN EXISTING PUMP CONTROL PANEL. REMOVE EXISTING PRESSURE SWITCHES, HARDWIRED SEQUENCING LOGIC, AND RELATED HARDWARE. TRANSFER ALL CONTROL FUNCTIONALITY TO THE NEW PLC IN THE NEW PSCP FOR LEVEL CONTROL. BUBBLER SYSTEM TO REMAIN.
 - REFER TO DRAWING G-11 FOR DETAILS OF THE CONSTRUCTION PHASING REQUIREMENTS FOR THE NEW PSCP.
 - INSTALL NEW ANTENNA ON TOP OF EXISTING RADIO TOWER. SHIFT EXISTING ANTENNA DOWN 5'. INSTALL NEW ANTENNA CABLE.
 - RELOCATE J-BOX AND RECEPTACLE BOX TOWARD TELOG PANEL TO MAKE ROOM FOR THE NEW PSCP.
 - REFER TO DRAWING G-14 FOR PANEL LAYOUT.

CONDUIT/CABLE SCHEDULE	
(A)	ANTENNA CABLE
(B)	2 #12, 1 #12 GND IN 3/4" C 10 #14 IN 3/4" C 7 STP IN 1-1/2" C
(C)	70 #14 IN 1-1/2" C 7 STP IN 1-1/2" C
(D)	14 #14 IN 3/4" C 3 STP IN 3/4" C
(E)	2 #12, 1 #12 GND IN 3/4" C



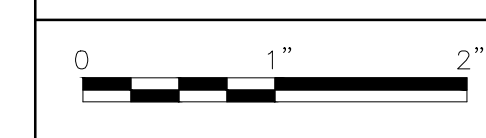
ISSUE	DATE	DESCRIPTION
1	MAR 27 2015	CONFORMED DRAWINGS
0	DEC 2014	BID

PROJECT MANAGER:	D. FOOTE
DESIGNED BY:	B. BUTLER
DRAWN BY:	G. BUI
PROJECT NUMBER:	8582



HAMPTON ROADS SANITATION DISTRICT
VIRGINIA BEACH, VIRGINIA

INTERCEPTOR SYSTEMS PUMP STATION
CONTROL AND SCADA



FILENAME	05135E63.DWG
SCALE	AS NOTED

DRAWING NUMBER	ES-63
SHEET	147 OF 256

SUFFOLK
GRAVITY LIFT STATION
NO 135
SITE PLAN