

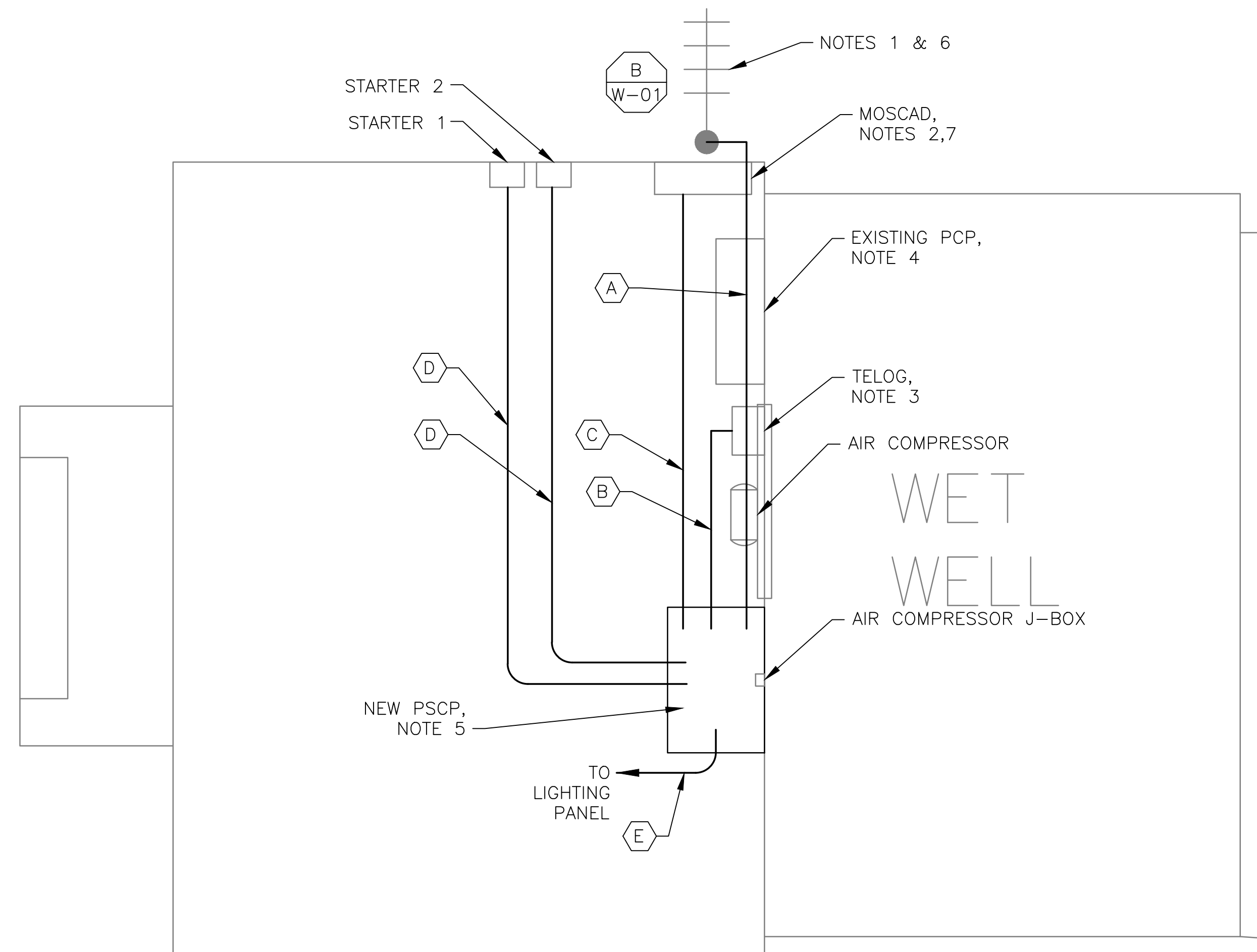
1 SITE PLAN
SCALE: 1" = 10'-0"



2 EXISTING ANTENNA LOCATION
SCALE: NOT TO SCALE

NOTES:

1. EXISTING YAGI ANTENNA AND CABLE TO BE REMOVED AFTER SUCCESSFUL INSTALLATION OF THE NEW PUMP STATION CONTROL PANEL (PSCP).
2. EXISTING MOSCAD UNIT AND RADIO PANEL TO BE REMOVED.
3. EXISTING TELOG PANEL TO REMAIN. REMOVE EXISTING ANALOG AND DIGITAL INPUTS BETWEEN MOSCAD UNIT AND TELOG UNIT. REPLACE THESE SIGNALS WITH IDENTICAL SIGNALS ORIGINATING FROM THE NEW PSCP.
4. RETAIN EXISTING PUMP CONTROL PANEL. REMOVE EXISTING HARDWIRED PRESSURE SWITCHES, SEQUENCING LOGIC, AND RELATED EQUIPMENT. TRANSFER ALL CONTROL FUNCTIONALITY TO THE NEW PLC IN THE NEW PSCP FOR LEVEL CONTROL. BUBBLER EQUIPMENT TO REMAIN IN PLACE. REMOVE ALL HAND SWITCHES FOR PUMP CONTROL ON PANEL DOOR AND INSTALL "BLANK" PLATES IN THEIR PLACE.
5. REFER TO DRAWING G-11 FOR DETAILS OF THE CONSTRUCTION PHASING REQUIREMENTS FOR THE NEW PSCP.
6. MOVE EXISTING ANTENNA DOWN ON MAST AND INSTALL NEW ANTENNA ON TOP OF MAST. INSTALL NEW ANTENNA CABLE.
7. RE-ROUTE ALL SIGNALS TERMINATED AT MOSCAD PANEL TO THE NEW PSCP USING NEW WIRES AND CONDUITS. ALL SIGNALS SHALL BE WIRED FROM ORIGINATING POINTS (ie, INSTRUMENTS AND DEVICES, PROVIDE J-BOX IF NECESSARY).
8. REFER TO DRAWING G-14 FOR PANEL LAYOUT.



1 ROOM PLAN
SCALE: 1/2" = 1'-0"



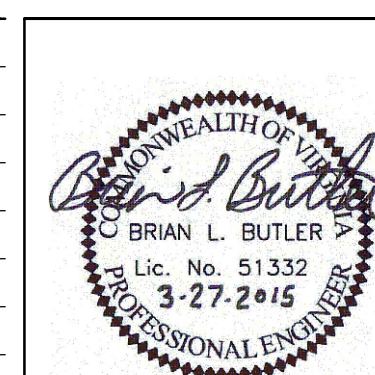
3 EXISTING PANEL LOCATION
SCALE: NOT TO SCALE

CONDUIT/CABLE SCHEDULE	
A	ANTENNA CABLE
B	2 #12, 1 #12 GND IN 3/4" C 6 #14 IN 3/4" C 5 STP IN 1" C
C	46 #14 IN 1-1/2" C 6 STP IN 1-1/2" C
D	14 #14 IN 3/4" C
E	2 #12, 1 #12 GND IN 3/4" C



ISSUE	DATE	DESCRIPTION
1	MAR 27 2015	CONFORMED DRAWINGS
0	DEC 2014	BID

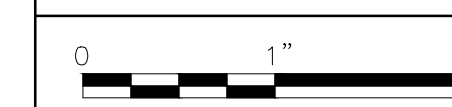
PROJECT MANAGER:	D. FOOTE
DESIGNED BY:	B. BUTLER
DRAWN BY:	G. BUI
PROJECT NUMBER:	8582



HAMPTON ROADS SANITATION DISTRICT
VIRGINIA BEACH, VIRGINIA

INTERCEPTOR SYSTEMS PUMP STATION
CONTROL AND SCADA

WILLOUGHBY AVE
GRAVITY LIFT STATION
NO 132
SITE PLAN



FILENAME	05132ES62.DWG
SCALE	AS NOTED

DRAWING NUMBER	ES-62	SHEET 146 OF 256
----------------	-------	------------------