

**5 SITE PLAN**  
SCALE: 1" = 20'-0"



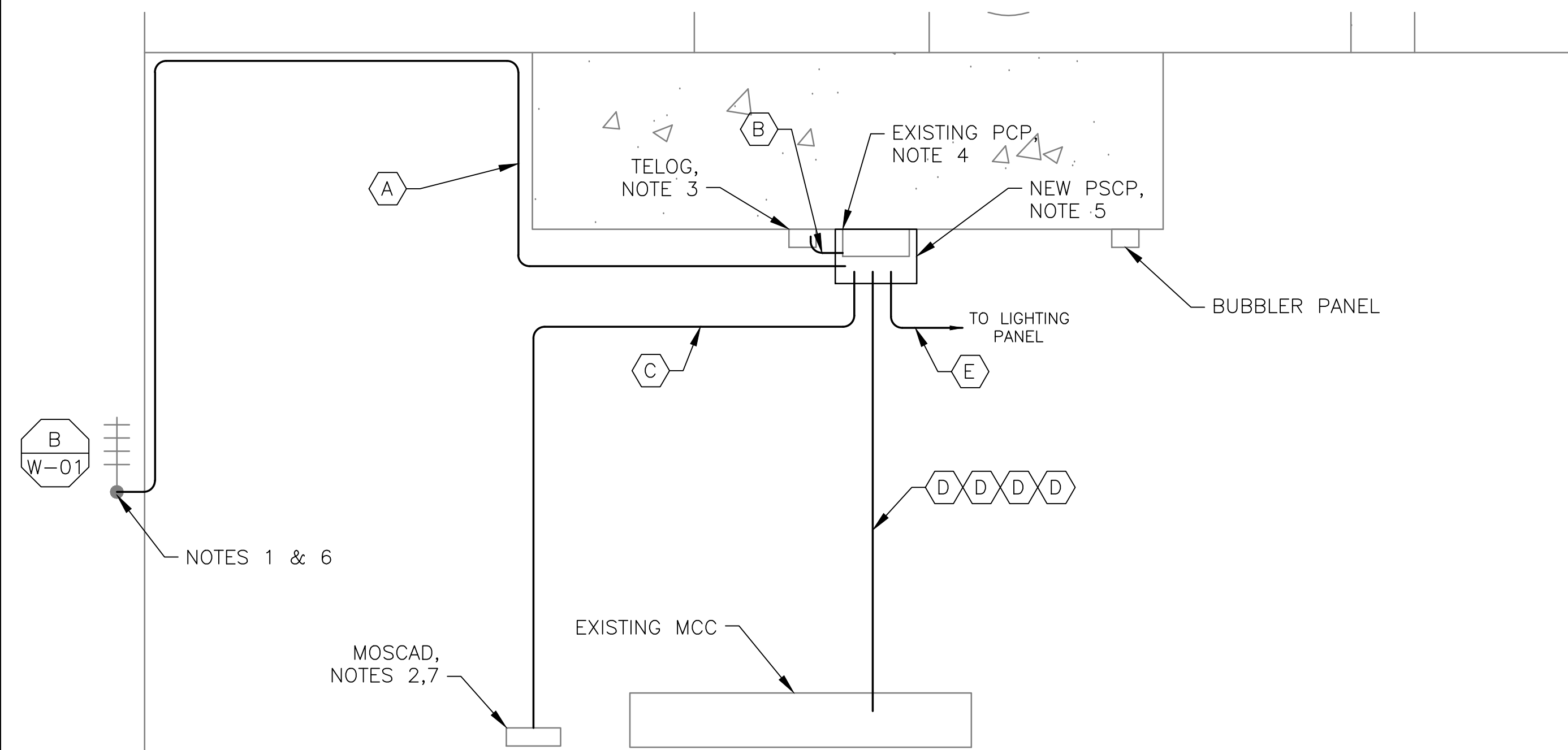
NOTES 1 & 6

**2 EXISTING ANTENNA LOCATION**  
SCALE: NOT TO SCALE

**NOTES:**

1. EXISTING YAGI ANTENNA AND CABLE TO BE REMOVED AFTER SUCCESSFUL INSTALLATION OF THE NEW PUMP STATION CONTROL PANEL (PSCP).
2. EXISTING MOSCAD UNIT AND RADIO PANEL TO BE REMOVED.
3. EXISTING TELOG PANEL TO REMAIN. REMOVE EXISTING ANALOG AND DIGITAL INPUTS BETWEEN MOSCAD UNIT AND TELOG UNIT. REPLACE THESE SIGNALS WITH IDENTICAL SIGNALS ORIGINATING FROM THE NEW PSCP.
4. REMOVE EXISTING PUMP CONTROL PANEL, AND REPLACE WITH A NEW WALL MOUNTED PANEL TO HOUSE THE NEW BUBBLER INSTRUMENTATION. RETAIN ALL BUBBLER CONTROL FUNCTIONALITY ON DOOR, (ie, PURGE, PRESSURE ALARMS, etc), OF NEW WALL MOUNTED PANEL. TRANSFER ALL LEVEL CONTROL FUNCTIONALITY TO THE NEW PSCP.
5. REFER TO DRAWING G-12 FOR DETAILS OF THE CONSTRUCTION PHASING REQUIREMENTS FOR THE NEW PSCP.
6. MOVE EXISTING ANTENNA DOWN ON MAST AND INSTALL NEW ANTENNA ON TOP OF MAST. INSTALL NEW ANTENNA CABLE.
7. RE-ROUTE ALL SIGNALS TERMINATED AT MOSCAD PANEL TO THE NEW PSCP USING NEW WIRES AND CONDUITS. ALL SIGNALS SHALL BE WIRED FROM ORIGINATING POINTS (ie, INSTRUMENTS AND DEVICES, PROVIDE J-BOX IF NECESSARY).
8. REFER TO DRAWING G-14 FOR PANEL LAYOUT.

CONDUIT/CABLE SCHEDULE	
A	ANTENNA CABLE
B	2 #12, 1 #12 GND IN 3/4" C
C	10 #14 IN 3/4" C
	6 STP IN 1-1/2" C
D	50 #14 IN 1-1/2" C
	6 STP IN 1-1/2" C
E	14 #14 IN 3/4" C
F	2 #12, 1 #12 GND IN 3/4" C



**1 ROOM PLAN**  
SCALE: 1/4" = 1'-0"



**3 CONTROL PANEL LOCATION**  
SCALE: NOT TO SCALE

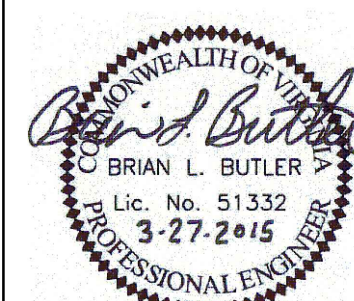


**4 EXISTING MOSCAD PANEL LOCATION**  
SCALE: NOT TO SCALE



ISSUE	DATE	DESCRIPTION
1	MAR 27 2015	CONFORMED DRAWINGS
0	DEC 2014	BID

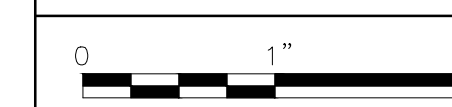
PROJECT MANAGER:	D. FOOTE
DESIGNED BY:	B. BUTLER
DRAWN BY:	G. BUI
PROJECT NUMBER:	8582



**HAMPTON ROADS SANITATION DISTRICT  
VIRGINIA BEACH, VIRGINIA**

**INTERCEPTOR SYSTEMS PUMP STATION  
CONTROL AND SCADA**

**WASHINGTON PLANT  
GRAVITY LIFT STATION  
NO 131  
SITE PLAN**



FILENAME	05131ES61.DWG
SCALE	AS NOTED

DRAWING NUMBER	ES-61
----------------	-------