

NOTES 1 & 6

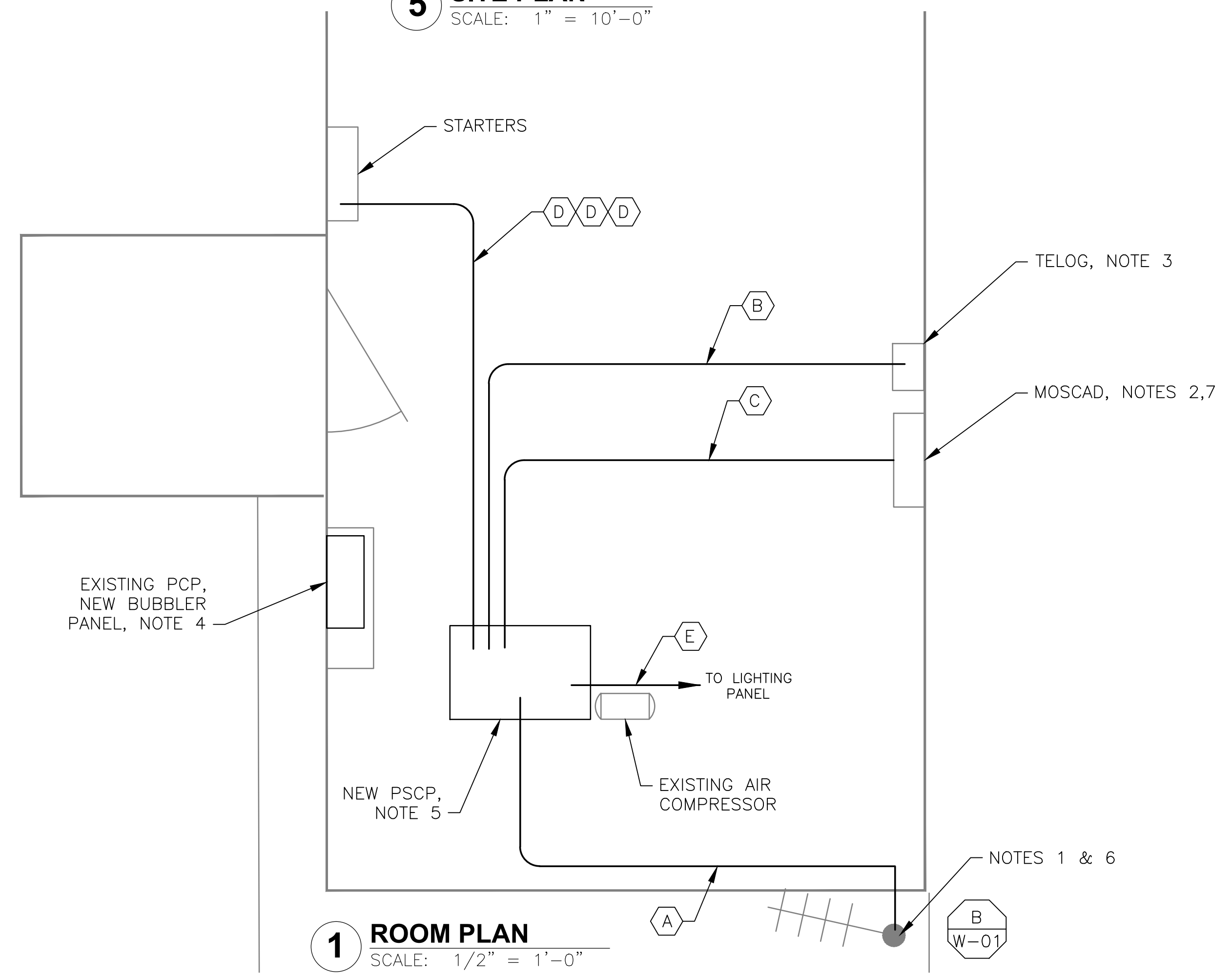


2 EXISTING ANTENNA LOCATION
SCALE: NOT TO SCALE

CONDUIT/CABLE SCHEDULE	
(A)	ANTENNA CABLE
(B)	2 #12, 1 #12 GND IN 3/4" C 10 #14 IN 3/4" C 6 STP IN 1-1/2" C
(C)	70 #14 IN 1-1/2" C 6 STP IN 1-1/2" C
(D)	14 #14 IN 3/4" C
(E)	2 #12, 1 #12 GND IN 3/4" C

- NOTES:**
- EXISTING YAGI ANTENNA AND CABLE TO BE REMOVED AFTER SUCCESSFUL INSTALLATION OF THE NEW PUMP STATION CONTROL PANEL (PSCP).
 - EXISTING MOSCAD UNIT AND RADIO PANEL TO BE REMOVED.
 - EXISTING TELOG PANEL TO REMAIN. REMOVE EXISTING ANALOG AND DIGITAL INPUTS BETWEEN MOSCAD UNIT AND TELOG UNIT. REPLACE THESE SIGNALS WITH IDENTICAL SIGNALS ORIGINATING FROM THE NEW PSCP.
 - REMOVE EXISTING PUMP CONTROL PANEL, AND REPLACE WITH A WALL MOUNTED PANEL TO HOUSE THE NEW BUBBLER INSTRUMENTATION, REUSE PRESSURE TRANSMITTER, RETAIN ALL 'BUBBLER CONTROL FUNCTIONALITY ON DOOR, (ie, PURGE, PRESSURE ALARMS, etc), OF NEW WALL MOUNTED PANEL. TRANSFER ALL LEVEL CONTROL FUNCTIONALITY TO THE NEW PSCP.
 - REFER TO DRAWING G-11 FOR DETAILS OF THE CONSTRUCTION PHASING REQUIREMENTS FOR THE NEW PSCP.
 - MOVE EXISTING ANTENNA DOWN ON MAST AND INSTALL NEW ANTENNA ON TOP OF MAST. INSTALL NEW ANTENNA CABLE.
 - RE-ROUTE ALL SIGNALS TERMINATED AT MOSCAD PANEL TO THE NEW PSCP USING NEW WIRES AND CONDUITS. ALL SIGNALS SHALL BE WIRED FROM ORIGINATING POINTS (ie, INSTRUMENTS AND DEVICES, PROVIDE J-BOX IF NECESSARY).
 - REFER TO DRAWING G-14 FOR PANEL LAYOUT.

5 SITE PLAN
SCALE: 1" = 10'-0"



1 ROOM PLAN
SCALE: 1/2" = 1'-0"

NOTE 2

NOTE 3



3 EXISTING MOSCAD PANEL LOCATION
SCALE: NOT TO SCALE

NOTE 5

NOTE 4

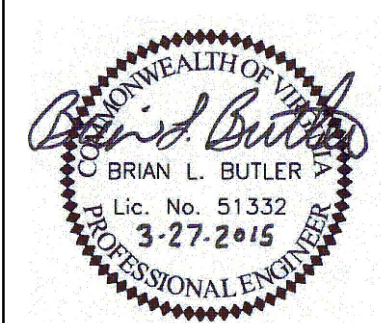


4 EXISTING CONTROL PANEL
SCALE: NOT TO SCALE



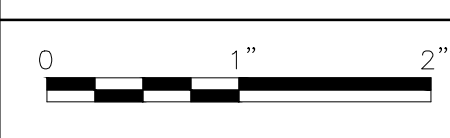
ISSUE	DATE	DESCRIPTION
1	MAR 27 2015	CONFORMED DRAWINGS
0	DEC 2014	BID

PROJECT MANAGER:	D. FOOTE
DESIGNED BY:	B. BUTLER
DRAWN BY:	G. BUI
PROJECT NUMBER:	8582



HAMPTON ROADS SANITATION DISTRICT
VIRGINIA BEACH, VIRGINIA
INTERCEPTOR SYSTEMS PUMP STATION
CONTROL AND SCADA

VIRGINIA BEACH BLVD
GRAVITY LIFT STATION
NO 130
SITE PLAN



FILENAME	05130ES60.DWG
SCALE	AS NOTED

DRAWING NUMBER	ES-60
SHEET	144 OF 256