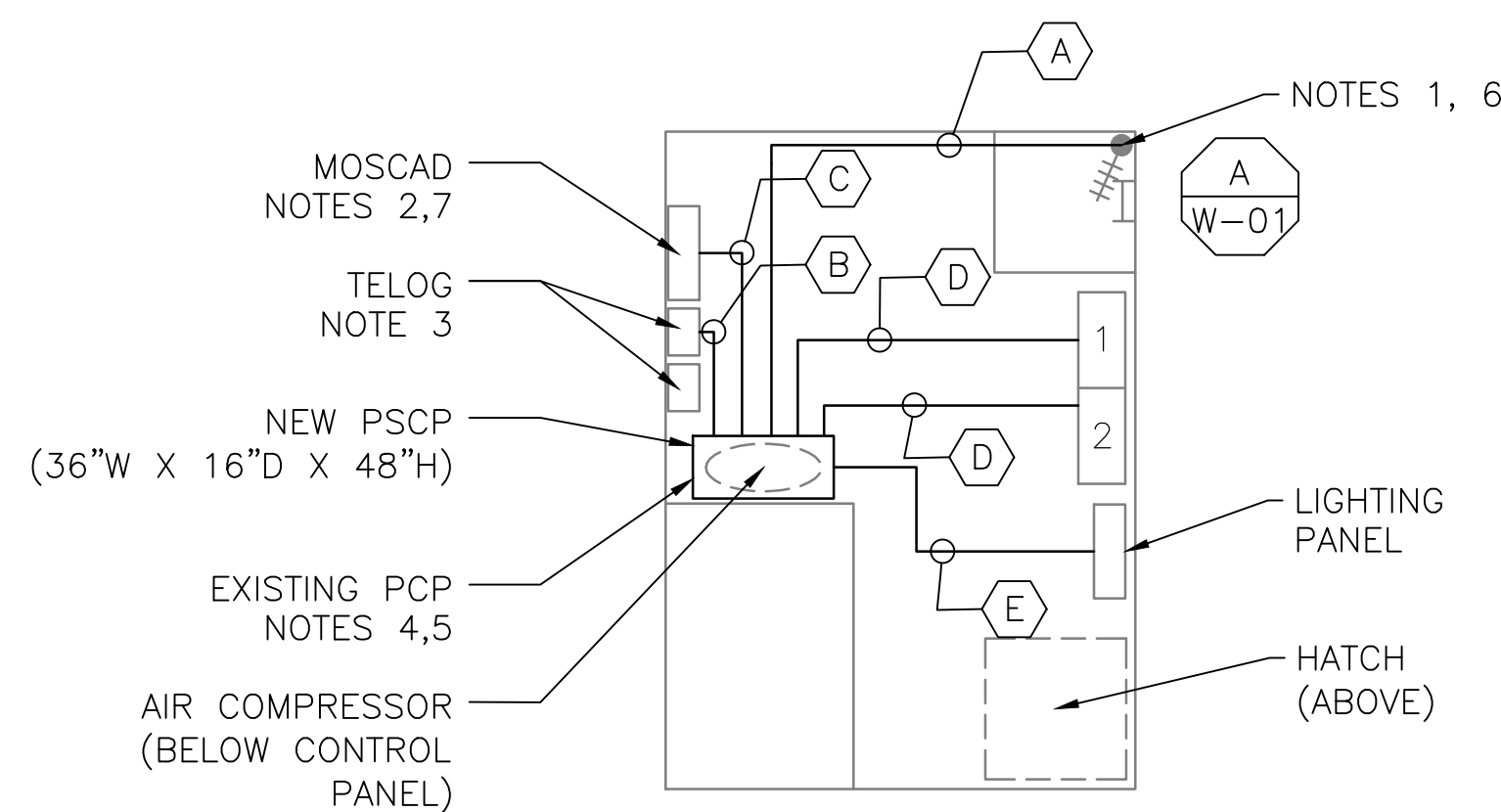


4 SITE PLAN
SCALE: 1/8" = 1'



1 FLOOR PLAN
SCALE: 1/4" = 1'



2 EXISTING ANTENNA LOCATION
SCALE: NOT TO SCALE



3 CONTROL PANEL LOCATION
SCALE: NOT TO SCALE

NOTES:

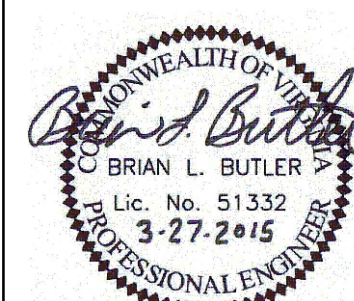
1. EXISTING YAGI ANTENNA AND CABLE TO BE REMOVED AFTER SUCCESSFUL INSTALLATION OF THE NEW PUMP STATION CONTROL PANEL (PSCP)
2. EXISTING MOSCAD UNIT AND RADIO TO BE REMOVED FROM EXISTING PANEL.
3. EXISTING TELOG PANEL TO REMAIN. REMOVE EXISTING ANALOG AND DIGITAL INPUTS BETWEEN MOSCAD UNIT AND TELOG UNIT. REPLACE THESE SIGNALS WITH IDENTICAL SIGNALS ORIGINATING FROM THE NEW PSCP.
4. REMOVE EXISTING PUMP CONTROL PANEL AFTER INSTALLATION OF THE TEMPORARY CONTROL PANEL. REWIRE CONTROLS TO THE NEW PSCP AS SHOWN ON THE DRAWINGS.
5. REFER TO DRAWING G-12 FOR DETAILS OF THE CONSTRUCTION PHASING REQUIREMENTS FOR THE NEW PSCP.
6. REPLACE EXISTING ANTENNA MOUNT PIPE WITH A PIPE THAT EXTENDS FIVE FEET ABOVE ROOF LEVEL. MOUNT NEW PIPE USING EXISTING MOUNT BRACKETS. RE-INSTALL EXISTING ANTENNA AT SAME POSITION AND INSTALL NEW ANTENNA AT TOP OF THE PIPE. INSTALL NEW ANTENNA CABLE TO NEW ANTENNA.
7. PROVIDE NEW TERMINAL BLOCKS IN EXISTING PANEL AND EXTEND EXISTING CONTROL WIRING TO THE NEW PSCP.
8. REFER TO DRAWING G-14 FOR PANEL LAYOUT.

CONDUIT/CABLE SCHEDULE	
(A)	ANTENNA CABLE
	2 #12, 1 #12 GND IN 3/4" C
(B)	6 #14 IN 3/4" C
	3 STP IN 1" C
(C)	50 #14 IN 1-1/2" C
	7 STP IN 1-1/2" C
(D)	14 #14 IN 3/4" C
(E)	2 #12, 1 #12 GND IN 3/4" C



ISSUE	DATE	DESCRIPTION
1	MAR 27 2015	CONFORMED DRAWINGS
0	DEC 2014	BID

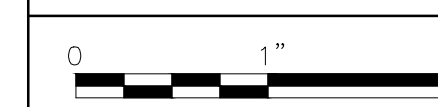
PROJECT MANAGER:	D. FOOTE
DESIGNED BY:	B. BUTLER
DRAWN BY:	G. BUI
PROJECT NUMBER:	8582



HAMPTON ROADS SANITATION DISTRICT
VIRGINIA BEACH, VIRGINIA

INTERCEPTOR SYSTEMS PUMP STATION
CONTROL AND SCADA

RICHMOND CRESCENT
GRAVITY LIFT STATION
NO 124
SITE PLAN



FILENAME	05124ES55.DWG
SCALE	AS NOTED

DRAWING NUMBER	ES-55
----------------	-------