

**5 SITE PLAN**  
SCALE: 1/8" = 1'-0"

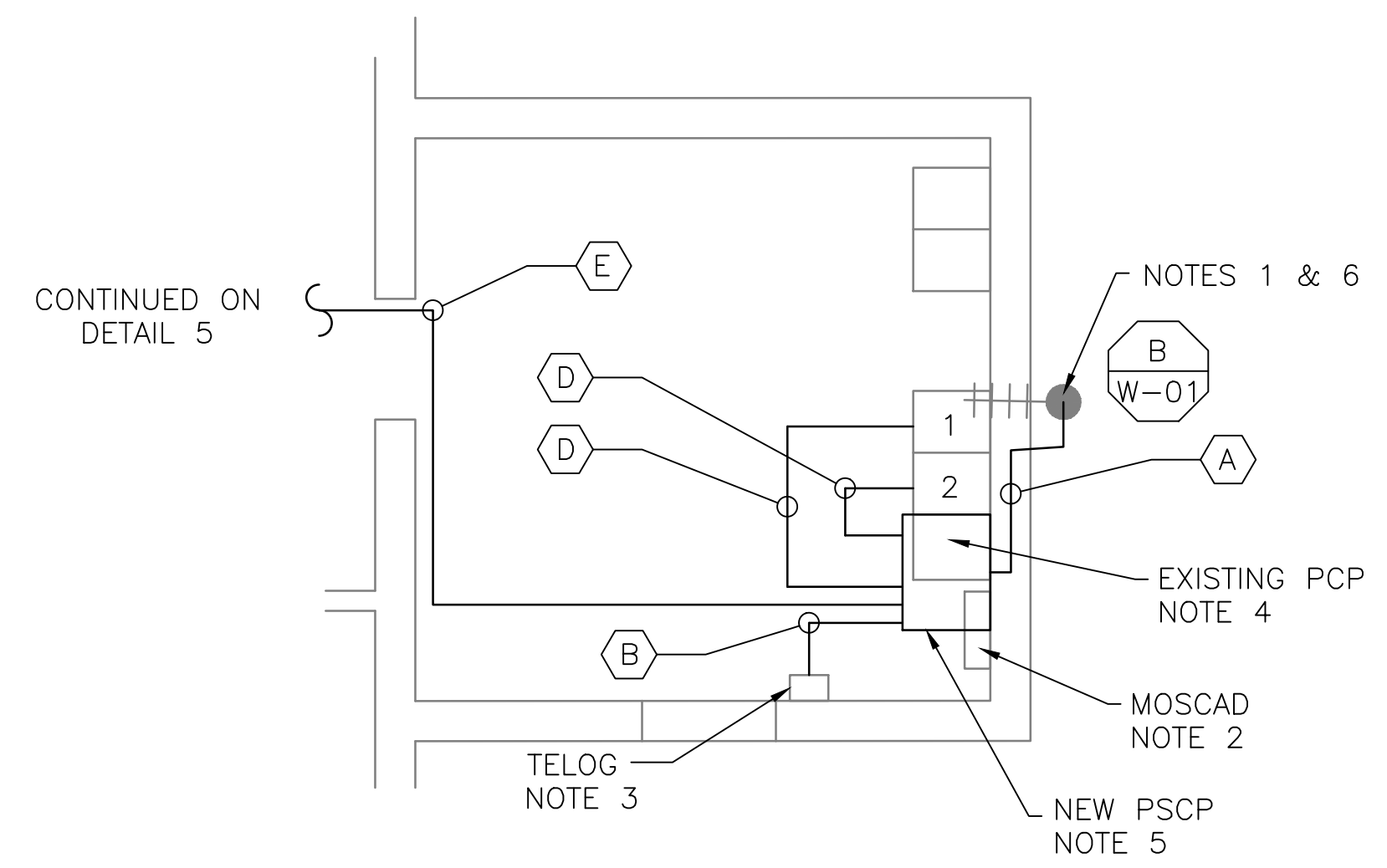


**2 EXISTING ANTENNA LOCATION**  
SCALE: NOT TO SCALE

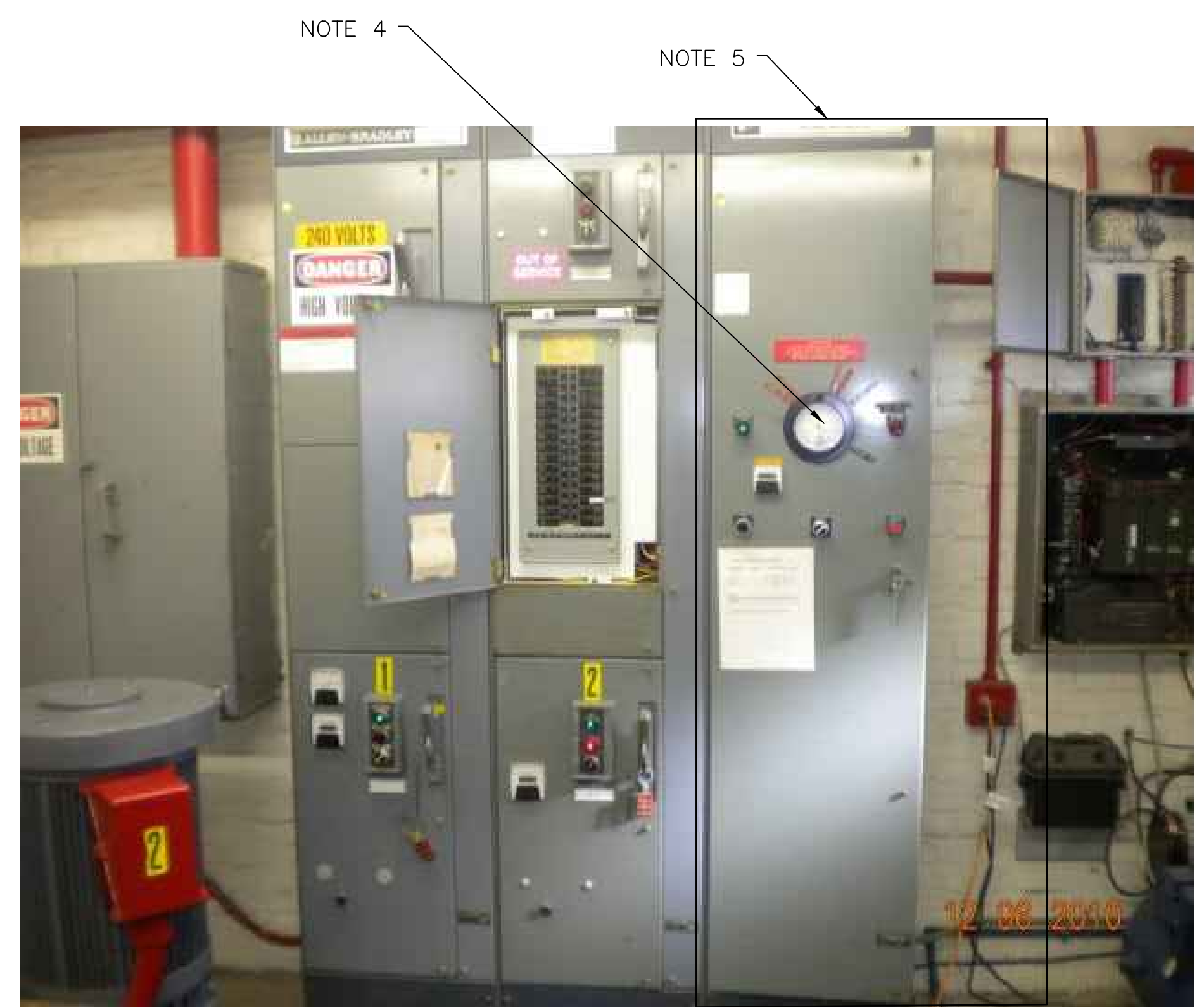
**NOTES:**

- EXISTING YAGI ANTENNA AND CABLE TO BE REMOVED AFTER SUCCESSFUL INSTALLATION OF THE NEW PUMP STATION CONTROL PANEL (PSCP).
- EXISTING MOSCAD PANEL AND TERMINATION PANEL TO BE TEMPORARILY RELOCATED, THEN REMOVED FROM SITE AFTER INSTALLATION AND TESTING OF THE NEW PSCP. REFER TO THE I/O LIST FOR EXISTING MOSCAD ANALOG AND DIGITAL I/O SIGNALS WHICH WILL BE RE-TERMINATED WITHIN THE NEW PSCP.
- EXISTING TELOG PANEL TO REMAIN. REMOVE EXISTING ANALOG AND DIGITAL INPUTS BETWEEN MOSCAD UNIT AND TELOG UNIT. REPLACE THESE SIGNALS WITH IDENTICAL SIGNALS ORIGINATING FROM THE NEW PSCP.
- REMOVE EXISTING PUMP CONTROL PANEL AFTER INSTALLATION OF THE TEMPORARY PUMP CONTROL PANEL. REWIRE CONTROLS TO THE NEW PSCP AS SHOWN ON THE DRAWINGS.
- REFER TO DRAWING G-13 FOR DETAILS OF THE CONSTRUCTION PHASING REQUIREMENTS FOR THE NEW PSCP.
- MOVE EXISTING ANTENNA DOWN ON MAST AND INSTALL NEW ANTENNA ON TOP OF MAST. INSTALL NEW ANTENNA CABLE.
- REFER TO DRAWING G-14 FOR PANEL LAYOUT.

CONDUIT/CABLE SCHEDULE	
A	ANTENNA CABLE
	2 #12, 1 #12 GND IN 3/4" C
B	6 #14 IN 3/4" C
	4 STP IN 3/4" C
C	NOT USED
D	14 #14 IN 3/4" C
E	2 #12 IN 3/4" C



**1 FLOOR PLAN**  
SCALE: 1/4" = 1'-0"



**3 CONTROL PANEL LOCATION**  
SCALE: NOT TO SCALE

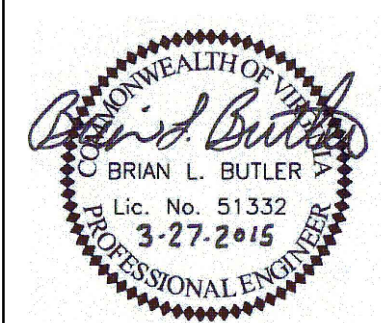


**4 EXISTING SCADA PANEL LOCATION**  
SCALE: NOT TO SCALE



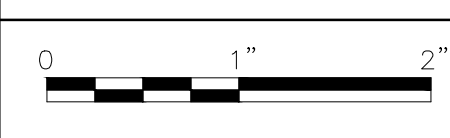
ISSUE	DATE	DESCRIPTION
1	MAR 27 2015	CONFORMED DRAWINGS
0	DEC 2014	BID

PROJECT MANAGER:	D. FOOTE
DESIGNED BY:	B. BUTLER
DRAWN BY:	G. BUI
PROJECT NUMBER:	8582



**HAMPTON ROADS SANITATION DISTRICT**  
VIRGINIA BEACH, VIRGINIA

**INTERCEPTOR SYSTEMS PUMP STATION**  
CONTROL AND SCADA



FILENAME	05119ES51.DWG
SCALE	AS NOTED

DRAWING NUMBER	ES-51
SHEET	135 OF 256

**PARK AVE.**  
**GRAVITY LIFT STATION**  
**NO 119**  
**SITE PLAN**