

5 **SITE PLAN**
SCALE: 1/8" = 1'-0"

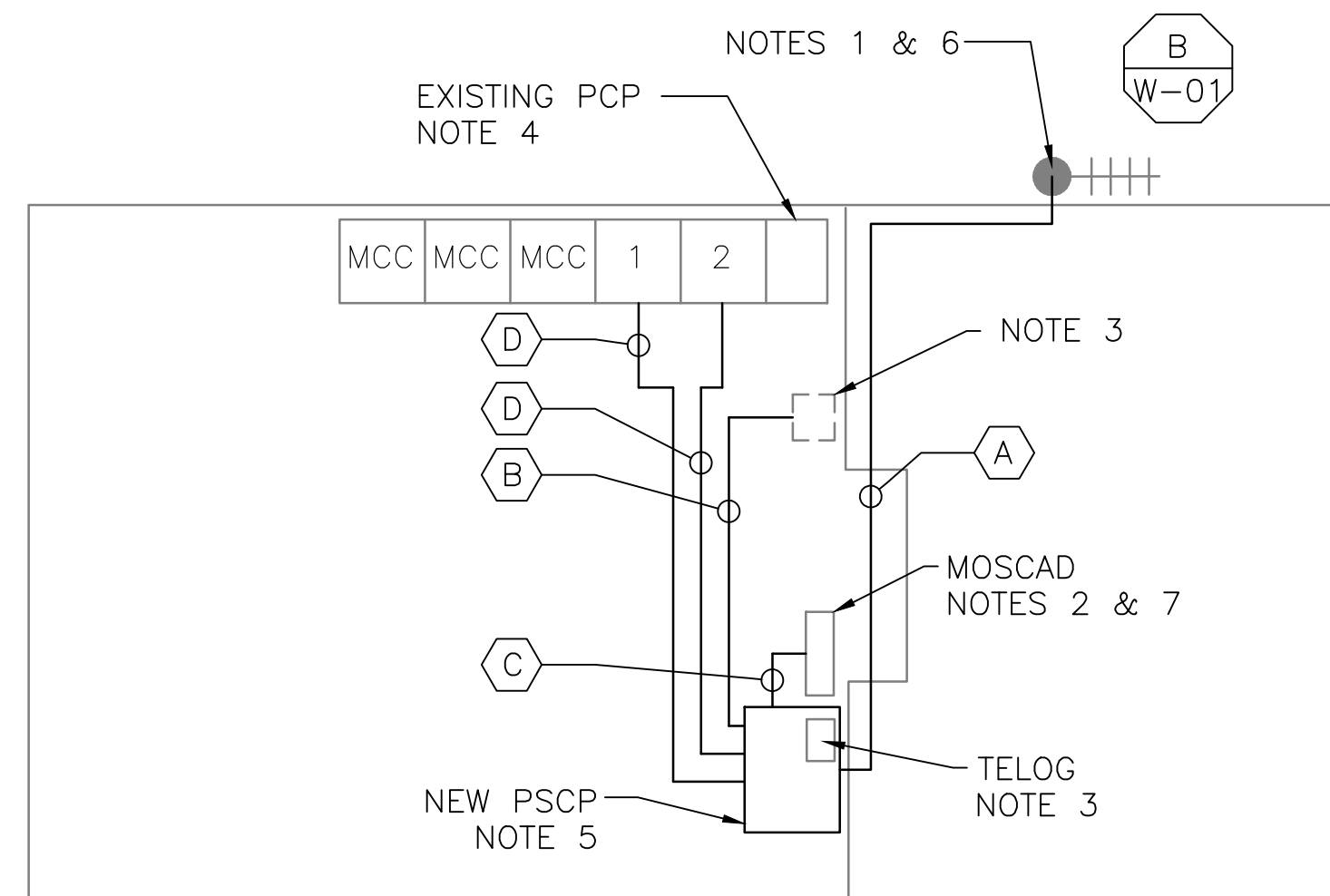


2 **EXISTING ANTENNA LOCATION**
SCALE: NOT TO SCALE

NOTES:

- EXISTING YAGI ANTENNA AND CABLE TO BE REMOVED AFTER SUCCESSFUL INSTALLATION OF THE NEW PUMP STATION CONTROL PANEL (PSCP).
- EXISTING MOSCAD UNIT AND RADIO TO BE REMOVED FROM EXISTING PANEL.
- EXISTING TELOG PANEL TO BE RELOCATED AND MOUNTED TO THE SPACE ADJACENT TO THE NEW PSCP. EXACT LOCATION TO BE COORDINATED WITH HRSD. REMOVE EXISTING ANALOG AND DIGITAL INPUTS BETWEEN MOSCAD UNIT AND TELOG UNIT. REPLACE THESE SIGNALS WITH IDENTICAL SIGNALS ORIGINATING FROM THE NEW PSCP.
- EXISTING PUMP CONTROL PANEL TO REMAIN. REMOVE EXISTING PLC'S, RELAYS, AND CONTROL EQUIPMENT AFTER INSTALLATION AND TESTING OF THE NEW PSCP.
- REFER TO DRAWING G-13 FOR DETAILS OF THE CONSTRUCTION PHASING REQUIREMENTS FOR THE NEW PSCP.
- MOVE EXISTING ANTENNA DOWN ON MAST AND INSTALL NEW ANTENNA ON TOP OF MAST. INSTALL NEW ANTENNA CABLE.
- PROVIDE NEW TERMINAL BLOCKS IN EXISTING PANEL AND EXTEND EXISTING CONTROL WIRING TO THE NEW PSCP.
- REFER TO DRAWING G-14 FOR PANEL LAYOUT.

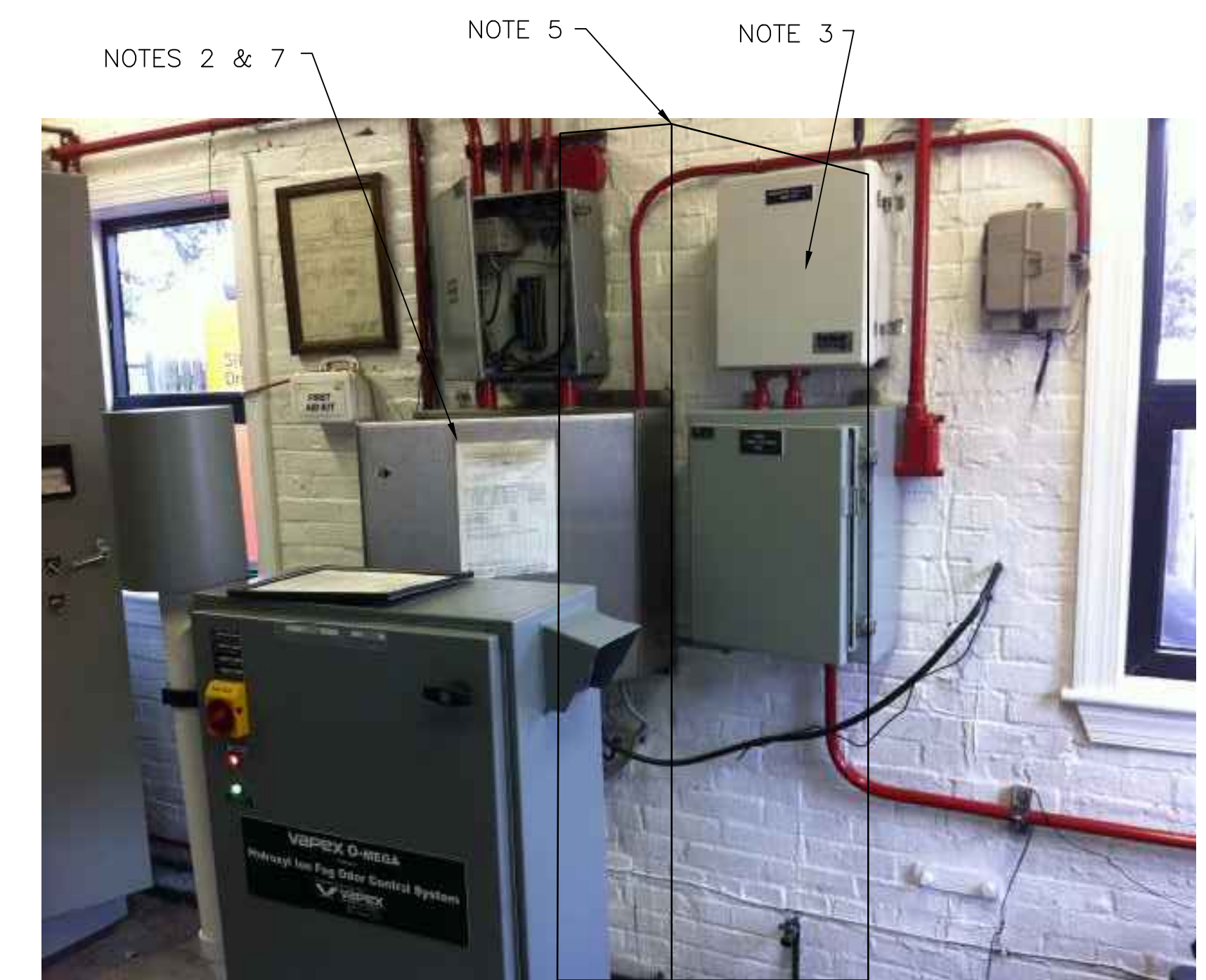
CONDUIT/CABLE SCHEDULE	
(A)	ANTENNA CABLE
	2 #12, 1 #12 GND IN 3/4" C
(B)	10 #14 IN 3/4" C
	4 STP IN 3/4" C
(C)	50 #14 IN 1-1/2" C
	5 STP IN 1" C
(D)	18 #14 IN 3/4" C
	3 STP IN 3/4" C



1 **SITE PLAN**
SCALE: 1/4" = 1'-0"



3 **EXISTING CONTROL PANEL LOCATION**
SCALE: NOT TO SCALE

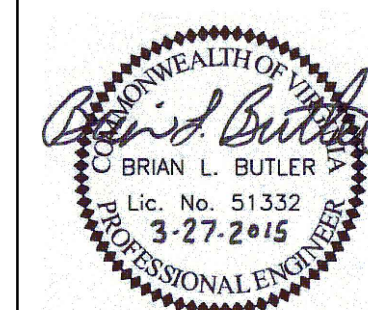


4 **CONTROL PANEL LOCATION**
SCALE: NOT TO SCALE



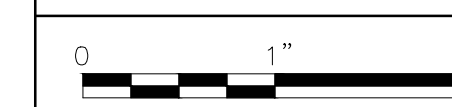
ISSUE	DATE	DESCRIPTION
1	MAR 27 2015	CONFORMED DRAWINGS
0	DEC 2014	BID

PROJECT MANAGER:	D. FOOTE
DESIGNED BY:	B. BUTLER
DRAWN BY:	G. BUI
PROJECT NUMBER:	8582



HAMPTON ROADS SANITATION DISTRICT
VIRGINIA BEACH, VIRGINIA

INTERCEPTOR SYSTEMS PUMP STATION
CONTROL AND SCADA



FILENAME	05116ES48.DWG
SCALE	AS NOTED

DRAWING NUMBER	ES-48
SHEET	132 OF 256

NORCHESTER AVE
GRAVITY LIFT STATION
NO 116
SITE PLAN