

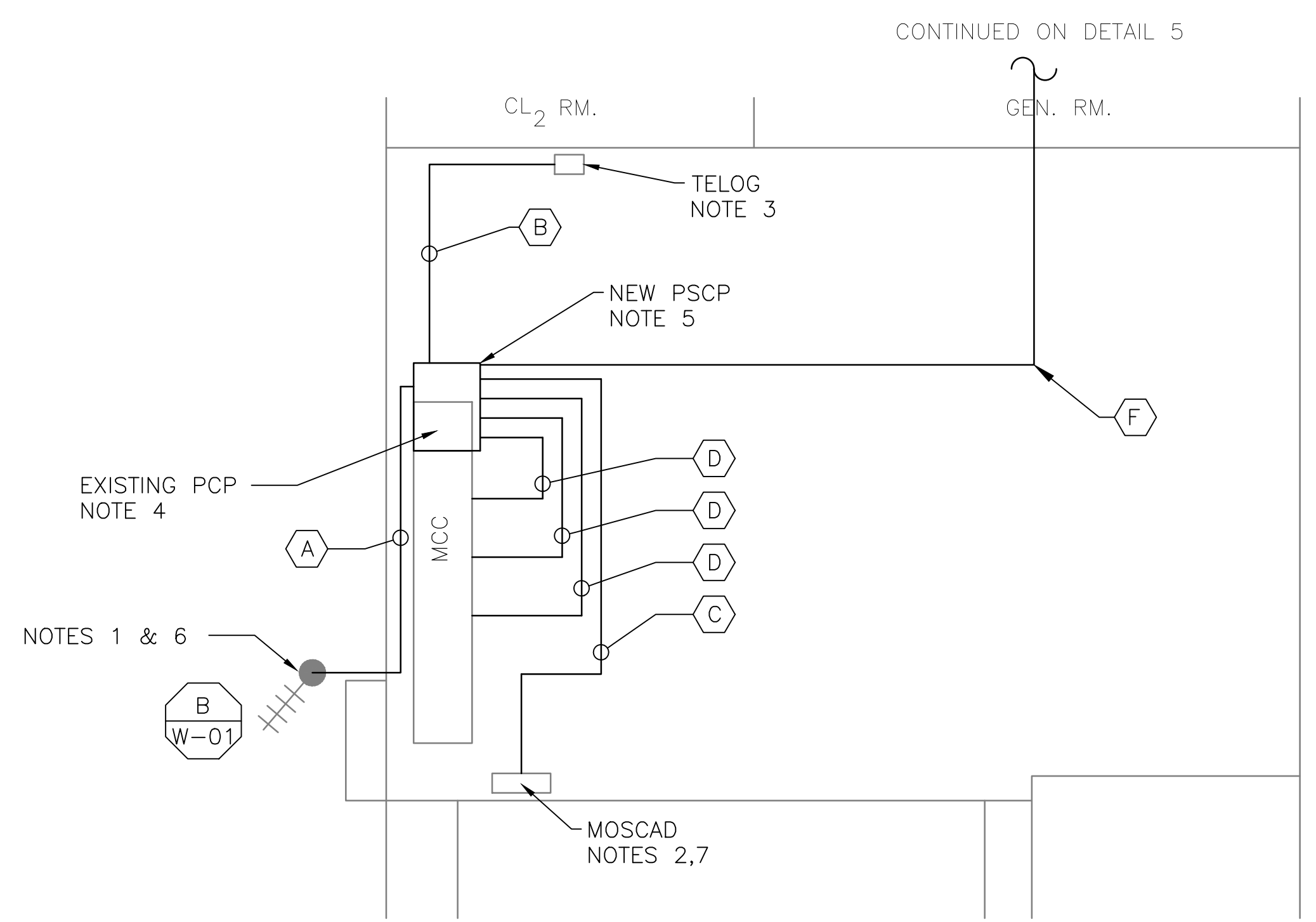
**5 SITE PLAN**  
SCALE: 1" = 20'-0"



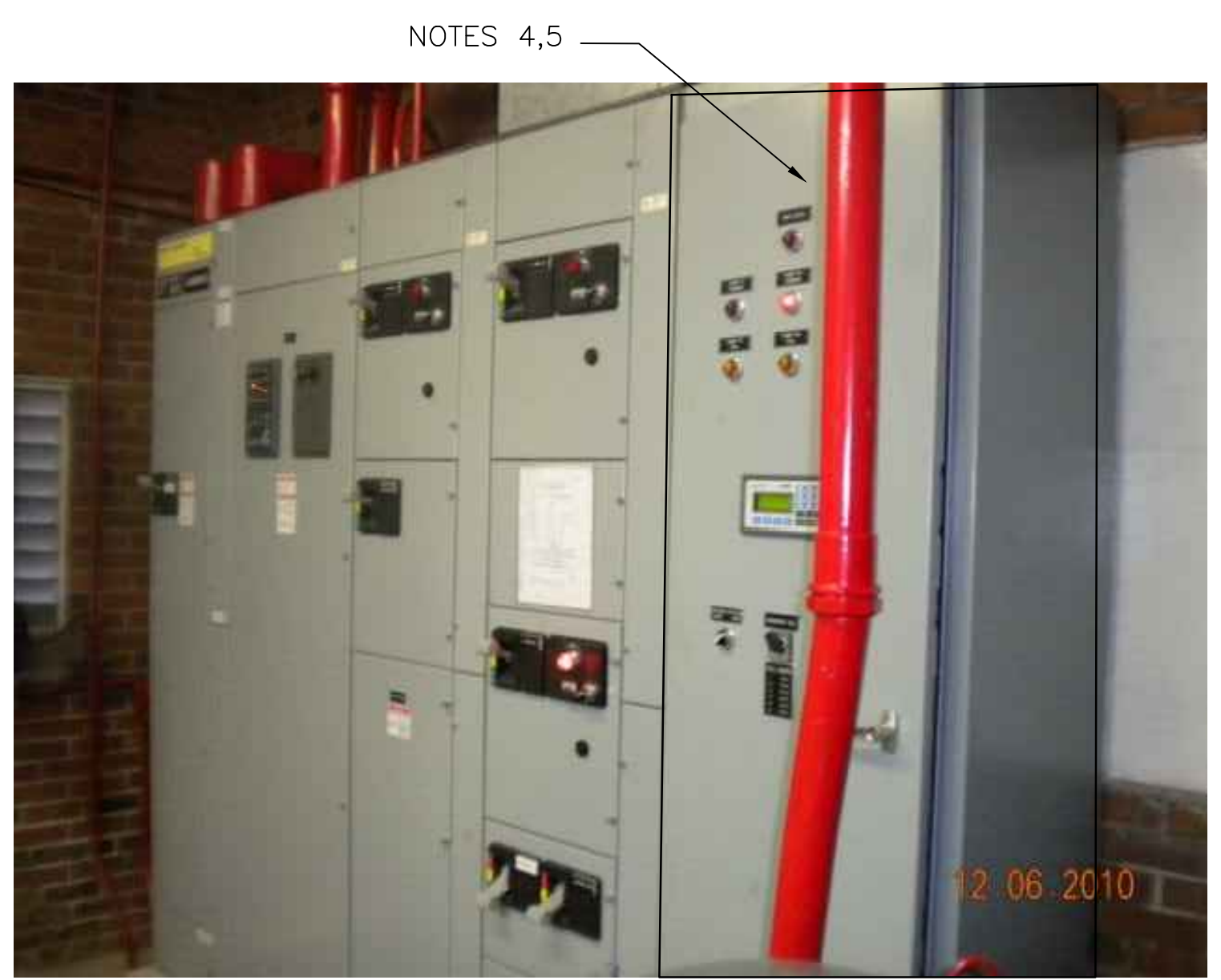
**2 EXISTING ANTENNA LOCATION**  
SCALE: NOT TO SCALE

- NOTES:**
- EXISTING YAGI ANTENNA AND CABLE TO BE REMOVED AFTER SUCCESSFUL INSTALLATION OF THE NEW PUMP STATION CONTROL PANEL (PSCP).
  - EXISTING MOSCAD UNIT AND RADIO TO BE REMOVED FROM EXISTING PANEL.
  - EXISTING TELOG PANEL TO REMAIN. REMOVE EXISTING ANALOG AND DIGITAL INPUTS BETWEEN MOSCAD UNIT AND TELOG UNIT. REPLACE THESE SIGNALS WITH IDENTICAL SIGNALS ORIGINATING FROM THE NEW PSCP.
  - REMOVE EXISTING PUMP CONTROL PANEL AFTER INSTALLATION OF THE TEMPORARY CONTROL PANEL. REWIRE CONTROLS TO THE NEW PSCP AS SHOWN ON THE DRAWINGS.
  - REFER TO DRAWING G-12 FOR DETAILS OF THE CONSTRUCTION PHASING REQUIREMENTS FOR THE NEW PSCP.
  - MOVE EXISTING ANTENNA DOWN ON MAST AND INSTALL NEW ANTENNA ON TOP OF MAST. INSTALL NEW ANTENNA CABLE.
  - PROVIDE NEW TERMINAL BLOCKS IN EXISTING PANEL AND EXTEND EXISTING CONTROL WIRING TO THE NEW PSCP.
  - REFER TO DRAWING G-14 FOR PANEL LAYOUT.

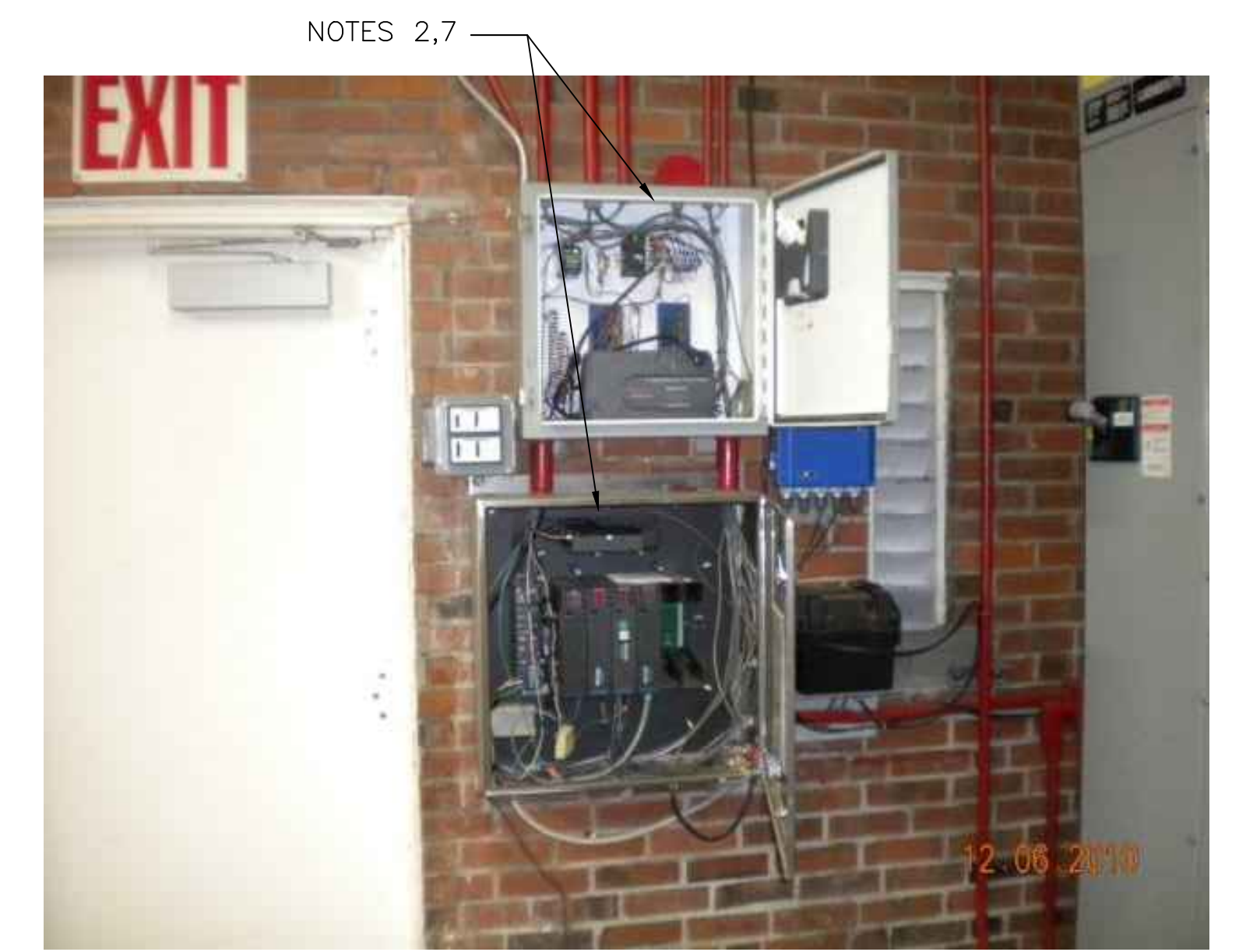
CONDUIT/CABLE SCHEDULE	
(A)	ANTENNA CABLE
	2 #12, 1 #12 GND IN 3/4" C
(B)	16 #14 IN 3/4" C
	7 STP IN 1-1/2" C
(C)	50 #14 IN 1-1/2" C
	7 STP IN 1-1/2" C
(D)	16 #14 IN 3/4" C
(E)	2 #12 IN 3/4" C



**1 ROOM PLAN**  
SCALE: 1/4" = 1'-0"



**3 CONTROL PANEL LOCATION**  
SCALE: NOT TO SCALE

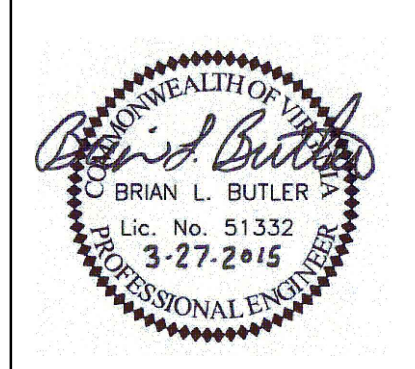


**4 MOSCAD PANEL LOCATION**  
SCALE: NOT TO SCALE



ISSUE	DATE	DESCRIPTION
1	MAR 27 2015	CONFORMED DRAWINGS
0	DEC 2014	BID

PROJECT MANAGER:	D. FOOTE
DESIGNED BY:	B. BUTLER
DRAWN BY:	G. BUI
PROJECT NUMBER:	8582



HAMPTON ROADS SANITATION DISTRICT  
VIRGINIA BEACH, VIRGINIA

INTERCEPTOR SYSTEMS PUMP STATION  
CONTROL AND SCADA

LUXEMBOURG AVE  
GRAVITY LIFT STATION  
NO 113  
SITE PLAN

0 1" 2"

FILENAME	05113ES45.DWG	DRAWING NUMBER	ES-45
SCALE	AS NOTED	SHEET	129 OF 256