



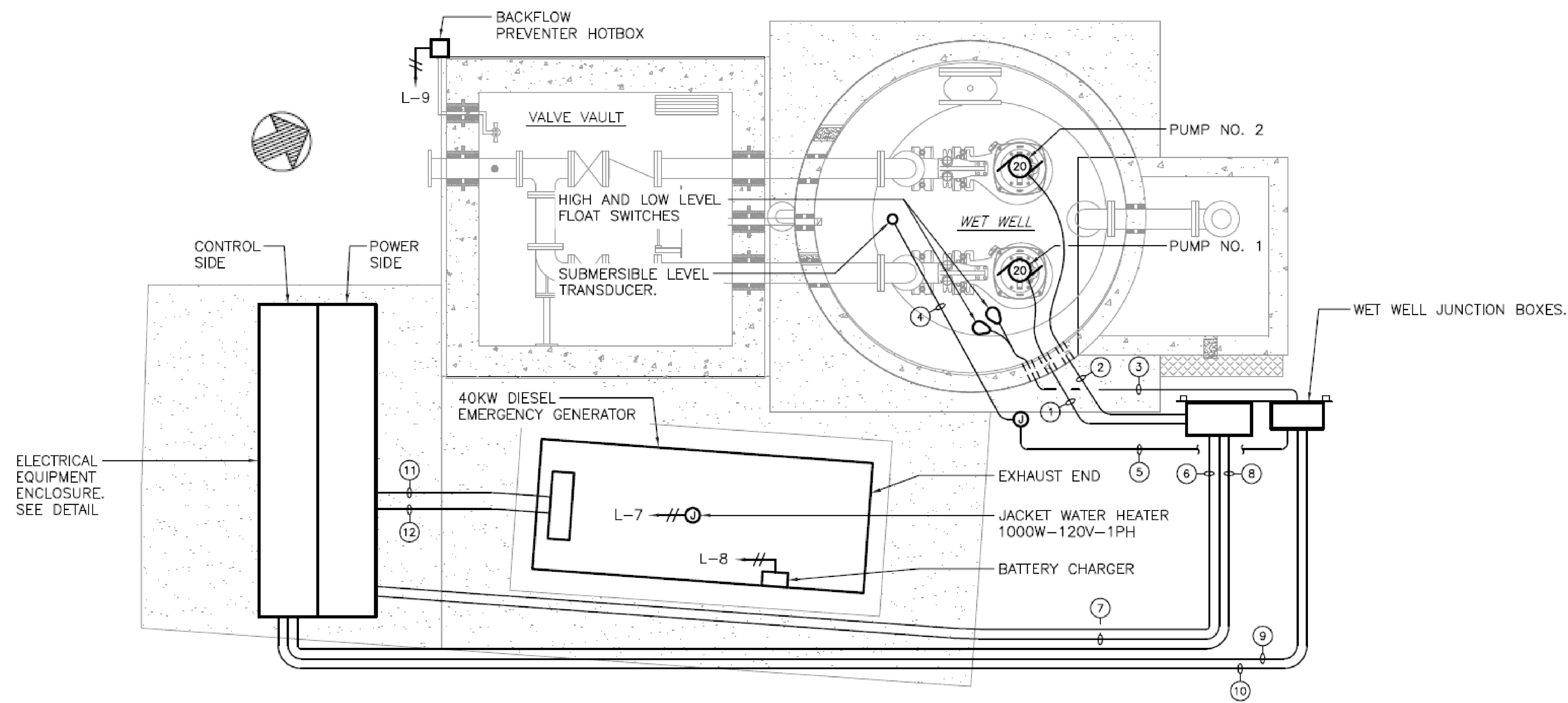
4 SITE PLAN
SCALE: NOT TO SCALE

SEE
DETAIL 1
THIS SHEET

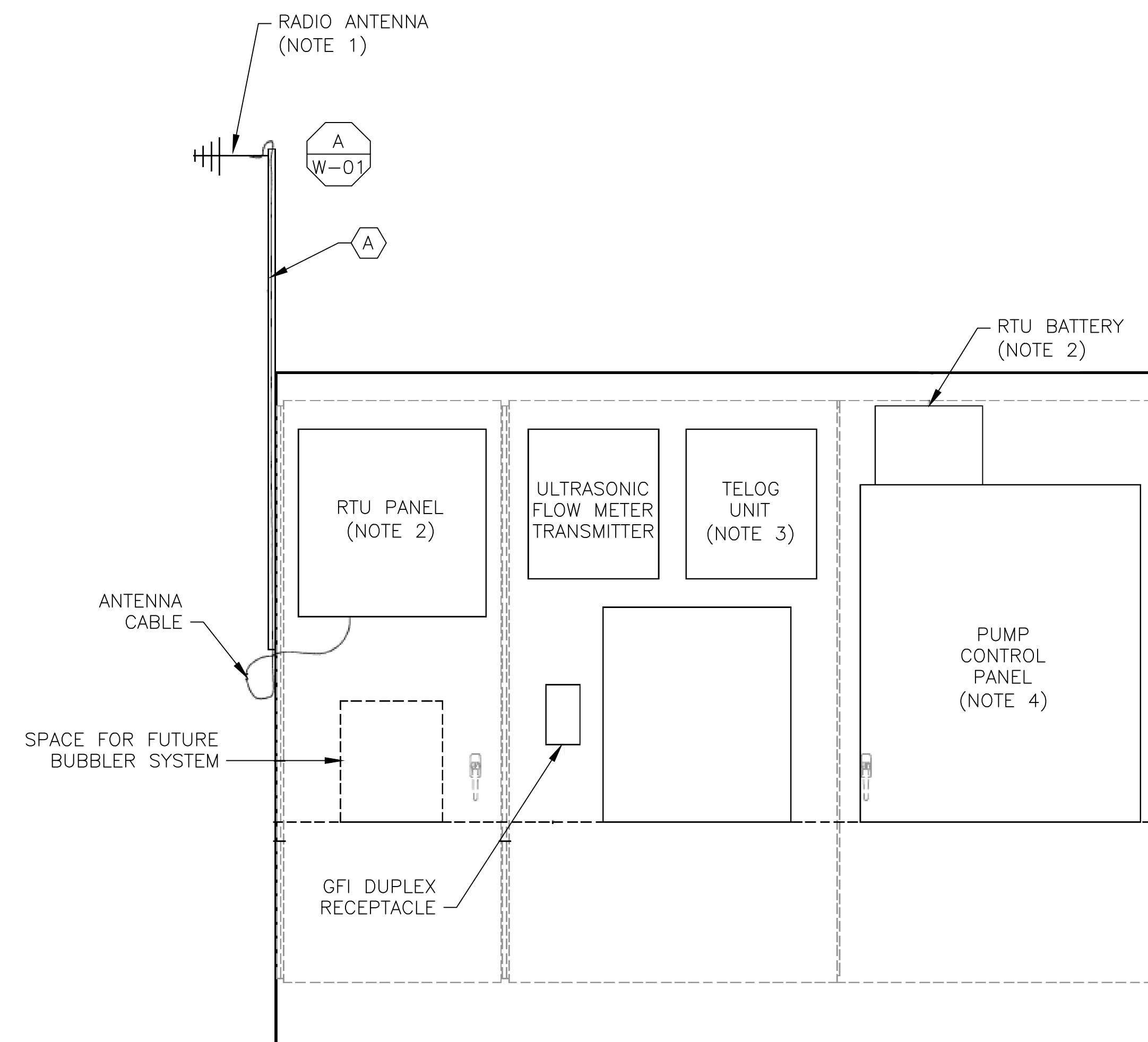
CONDUIT/CABLE SCHEDULE	
(A)	ANTENNA CABLE, REFER TO W-01 DETAIL A
(B)	NOT USED
(C)	NOT USED
(D)	NOT USED
(E)	NOT USED

NOTES:

1. PROVIDE NEW ANTENNA AND ANTENNA CABLE MOUNTED AT THE TOP OF THE EXISTING MAST. THE EXISTING YAGI ANTENNA AND CABLE SHALL BE LOWERED TO THE BOTTOM OF THE MAST AND THEN REMOVED AFTER SUCCESSFUL INSTALLATION OF THE NEW RTU, OIT, RADIO AND ANTENNA CABLE.
2. REMOVE EXISTING MOSCAD RTU PANEL, RADIO AND APPURTENANCES.
3. EXISTING TELOG PANEL TO REMAIN.
4. CONTROL PANEL HAS BEEN RECENTLY UPGRADED. REMOVE EXISTING PLC/OIT AND INSTALL NEW RTU/OIT AND RADIO IN THE EXISTING CONTROL PANEL.



1 PUMP STATION ELECTRICAL PLAN
SCALE: NOT TO SCALE

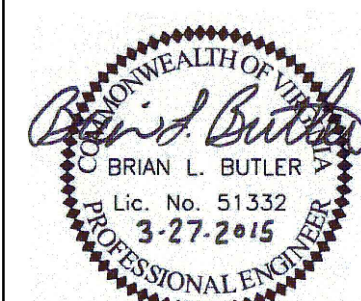


2 ELECTRICAL EQUIPMENT ENCLOSURE CONTROL SIDE BACKPANEL ELEVATION
SCALE: NOT TO SCALE



ISSUE	DATE	DESCRIPTION
1	MAR 27 2015	CONFORMED DRAWINGS
0	DEC 2014	BID

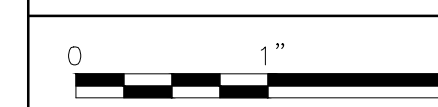
PROJECT MANAGER:	D. FOOTE
DESIGNED BY:	B. BUTLER
DRAWN BY:	G. BUI
PROJECT NUMBER:	8582



HAMPTON ROADS SANITATION DISTRICT
VIRGINIA BEACH, VIRGINIA

INTERCEPTOR SYSTEMS PUMP STATION
CONTROL AND SCADA

GRANBY ST
GRAVITY LIFT STATION
NO 111
SITE PLAN



FILENAME	05111ES44.DWG
SCALE	AS NOTED

DRAWING NUMBER	ES-44
----------------	-------