

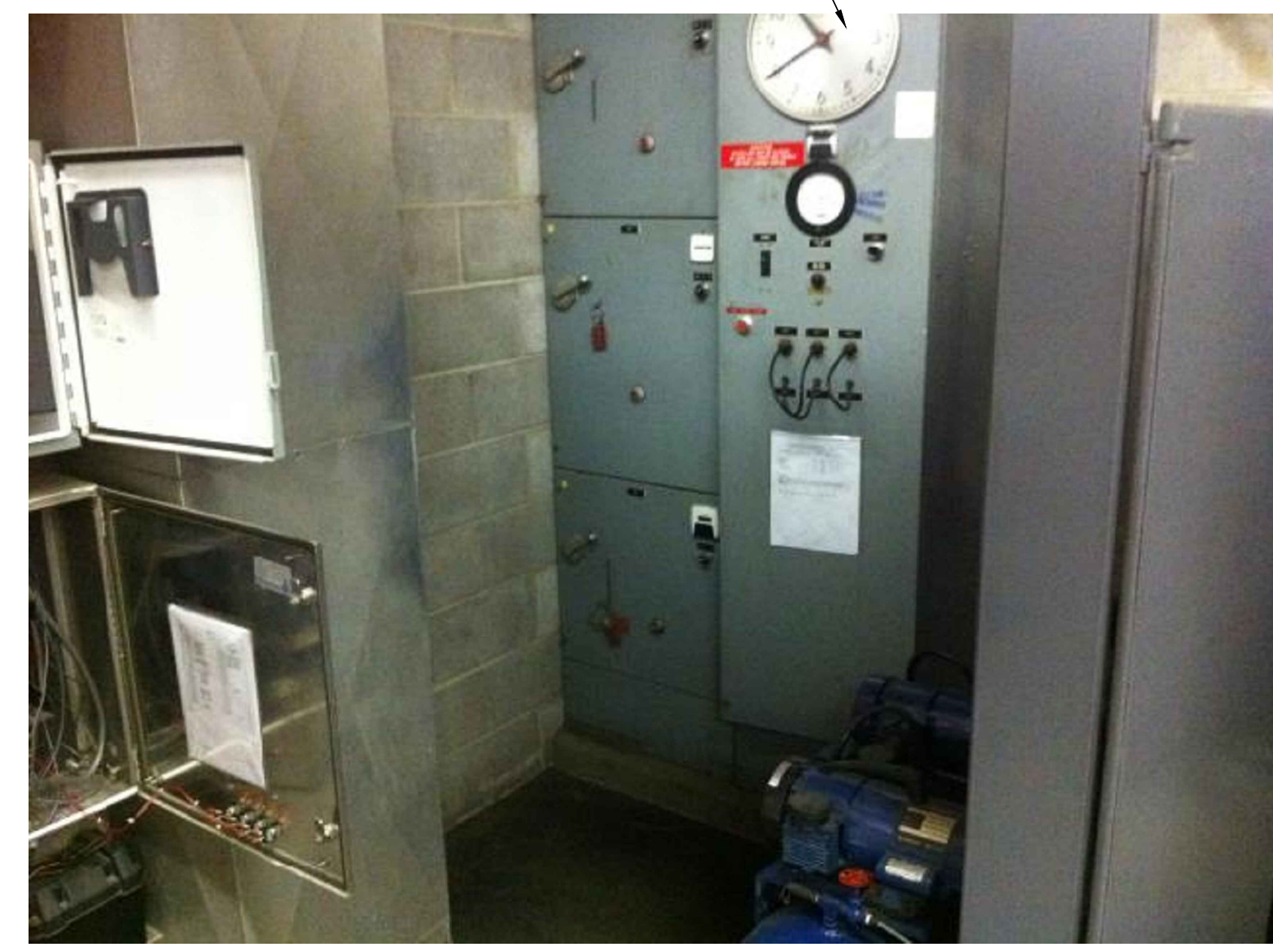
**5 SITE PLAN**  
SCALE: 1" = 20'-0"



**2 EXISTING ANTENNA LOCATION**  
SCALE: NOT TO SCALE

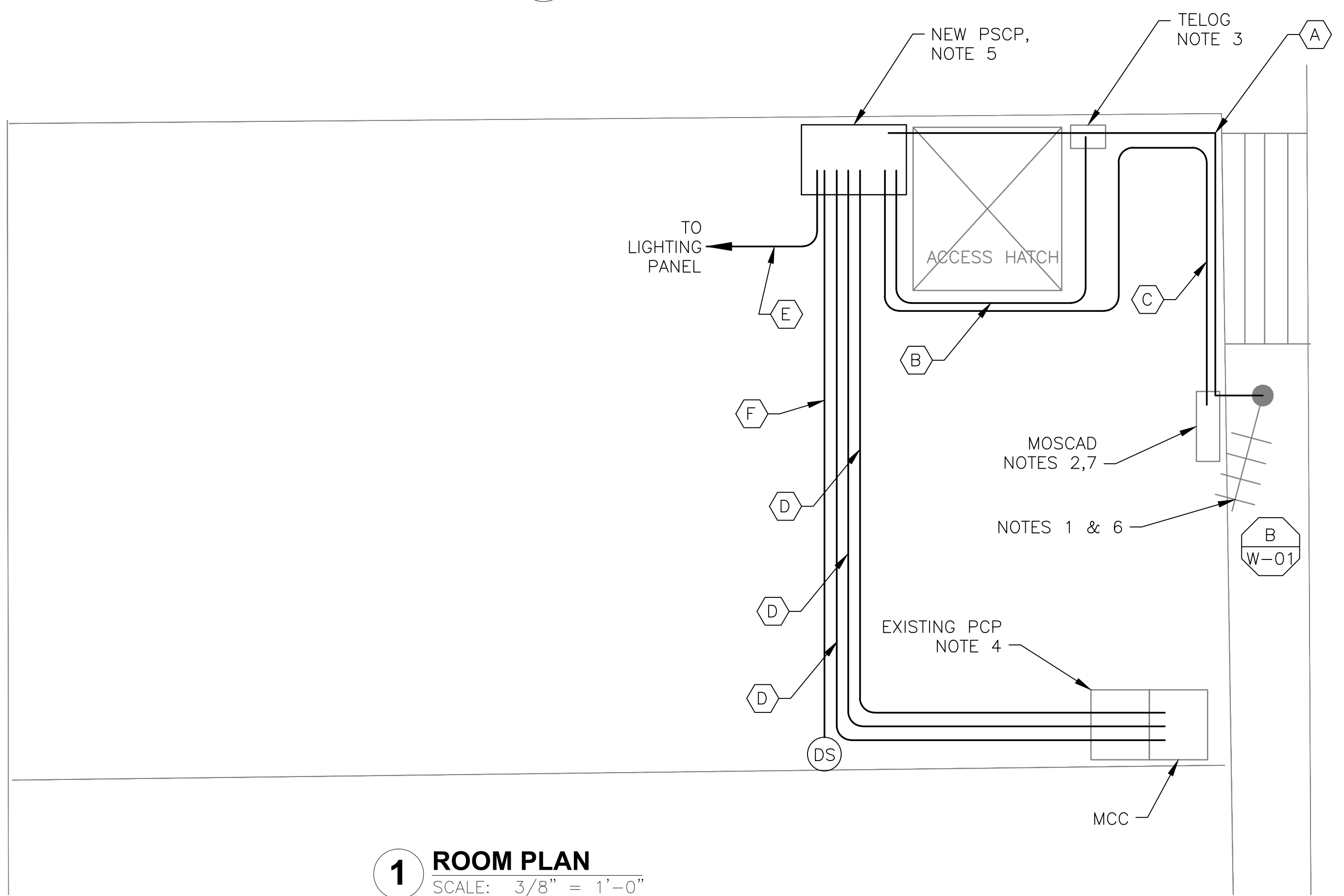
NOTES 1 & 6

- NOTES:**
- EXISTING YAGI ANTENNA AND CABLE TO BE REMOVED AFTER SUCCESSFUL INSTALLATION OF THE NEW PUMP STATION CONTROL PANEL (PSCP).
  - EXISTING MOSCAD UNIT AND RADIO TO BE REMOVED FROM EXISTING PANEL.
  - EXISTING TELOG PANEL TO REMAIN. REMOVE EXISTING ANALOG AND DIGITAL INPUTS BETWEEN MOSCAD UNIT AND TELOG UNIT. REPLACE THESE SIGNALS WITH IDENTICAL SIGNALS ORIGINATING FROM THE NEW PSCP.
  - EXISTING PUMP CONTROL PANEL TO REMAIN. REMOVE EXISTING PLC'S, RELAYS, AND CONTROL EQUIPMENT AFTER INSTALLATION AND TESTING OF THE NEW PSCP.
  - REFER TO DRAWING G-11 FOR DETAILS OF THE CONSTRUCTION PHASING REQUIREMENTS FOR THE NEW PSCP.
  - REPLACE EXISTING ANTENNA MOUNT PIPE WITH A PIPE THAT EXTENDS FIVE FEET ABOVE ROOF LEVEL. MOUNT NEW PIPE USING EXISTING WALL MOUNT BRACKETS. INSTALL NEW ANTENNA AT TOP OF PIPE AND EXISTING ANTENNA AT SAME LEVEL AS BEFORE. INSTALL NEW ANTENNA CABLE TO NEW ANTENNA.
  - PROVIDE NEW TERMINAL BLOCKS IN EXISTING PANEL AND EXTEND EXISTING CONTROL WIRING TO THE NEW PSCP.
  - REFER TO DRAWING G-14 FOR PANEL LAYOUT.



NOTE 4

**4 CONTROL PANEL LOCATION**  
SCALE: NOT TO SCALE



**1 ROOM PLAN**  
SCALE: 3/8" = 1'-0"

NOTES 2,7



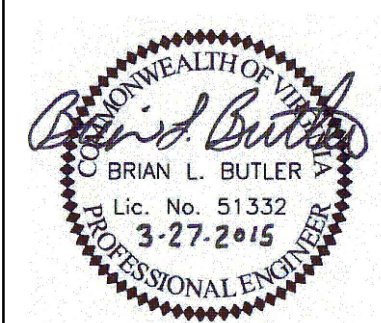
**3 MOSCAD PANEL LOCATION**  
SCALE: NOT TO SCALE

CONDUIT/CABLE SCHEDULE	
A	ANTENNA CABLE
B	2 #12, 1 #12 GND IN 3/4" C 12 #14 IN 3/4" C 9 STP IN 1-1/2" C
C	50 #14 IN 1-1/2" C 9 STP IN 1-1/2" C
D	16 #14 IN 3/4" C
E	2 #12, 1 #12 GND IN 3/4" C
F	2 #12 IN 3/4" C



ISSUE	DATE	DESCRIPTION
1	MAR 27 2015	CONFORMED DRAWINGS
0	DEC 2014	BID

PROJECT MANAGER:	D. FOOTE
DESIGNED BY:	B. BUTLER
DRAWN BY:	G. BUI
PROJECT NUMBER:	8582



**HAMPTON ROADS SANITATION DISTRICT**  
VIRGINIA BEACH, VIRGINIA

**INTERCEPTOR SYSTEMS PUMP STATION**  
CONTROL AND SCADA



FILENAME	05138ES40.DWG
SCALE	AS NOTED

DRAWING NUMBER	ES-40
SHEET	124 OF 256

**COLLEY AVE**  
**GRAVITY LIFT STATION**  
**NO 107**  
**SITE PLAN**